

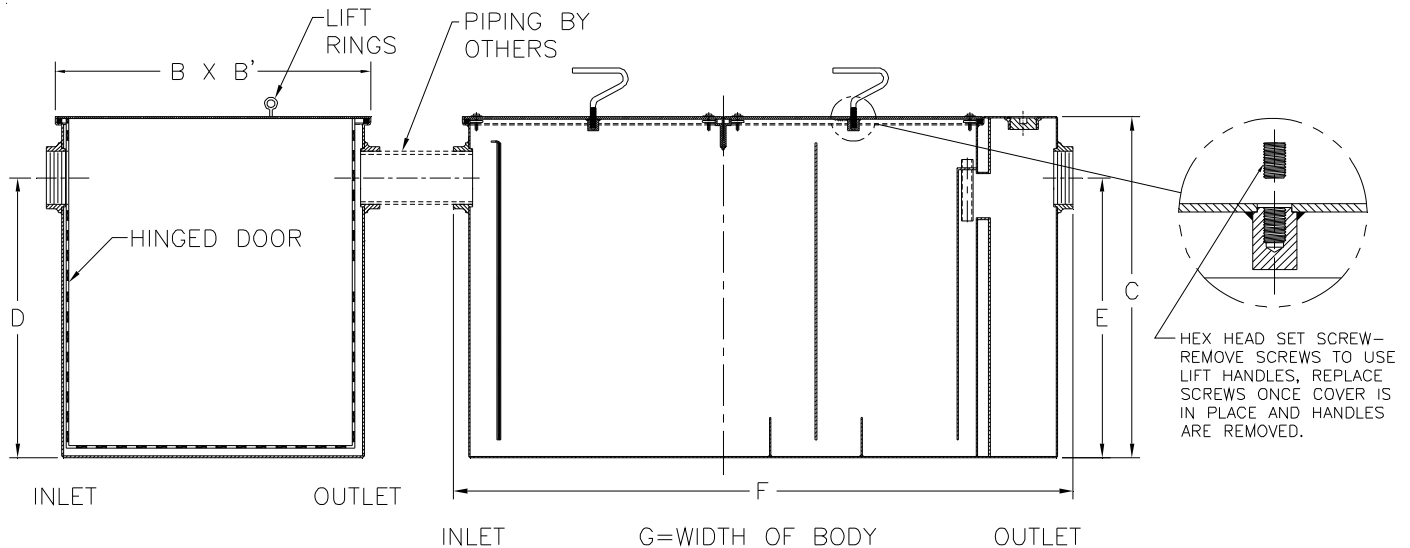


Z1172-100

LARGE CAPACITY GREASE INTERCEPTOR WITH SOLIDS INTERCEPTOR

SPECIFICATION SHEET
TAG _____

Dimensional Data (inches and [mm]) are Subject to Manufacturing Tolerances and Change Without Notice



Size	Inlet/ Outlet Size**	Flow Rate GPM. [L]	Capacity		No. of Covers	Approx. Wt. Lbs. [kg]	Dimensions in Inches					
			Water Gal. [L]	Grease Lbs. [kg]			B	B'	C	D/E	F	G
1200	4 [102]	150 [567]	195 [737]	300 [136]	2	856 [389]	21 [533]	25 [635]	30 3/4 [781]	25 1/4 [641]	56 [1422]	41 [1057]

ENGINEERING SPECIFICATION: ZURN Z1172-100

Large capacity Acid Resistant Coated interior and exterior fabricated steel grease interceptor, rated at ____ GPM and ____ Lbs. grease capacity, with internal air relief bypass, bronze cleanout plug and visible double wall trap seal with removable pressure equalizing/flow diffusing baffle. Gasketed nonskid secured covers with removable lift handles and enzyme port having bronze plug, complete with flow control fitting. Regularly furnished with inlet and outlet in high position. Acid Resistant Coated interior and exterior fabricated steel solids interceptor with basket and secured cover with lift rings.

OPTIONS (Check/specify appropriate options)

PREFIXES

____ Z Acid Resistant Coated Fabricated Steel*

SUFFIXES

- ____ -CC 8 [203] Diameter Cleanout Cover
- ____ -E Acid Resistant Coated Interior and exterior fabricated steel extension section. (Specify 'C' Dim. required) for recessed installation.
- ____ -HD Heavy duty traffic cover rated at 10,000 lbs. [4536] kg. maximum safe live load.
- ____ -K Anchor flange 1 3/4 [44] down from top and 2 [51] wide.
- ____ -KC Anchor flange 1 3/4 [44] down from top and 2 [51] wide with clamp collar.
- ____ -L Angle type (Z1108-L) flow control device.

*REGULARLY FURNISHED UNLESS OTHERWISE SPECIFIED

REV. A	DATE: 07/13/07	C.N. NO. 96934
DWG. NO. P-14300	PRODUCT NO. Z1172-100	