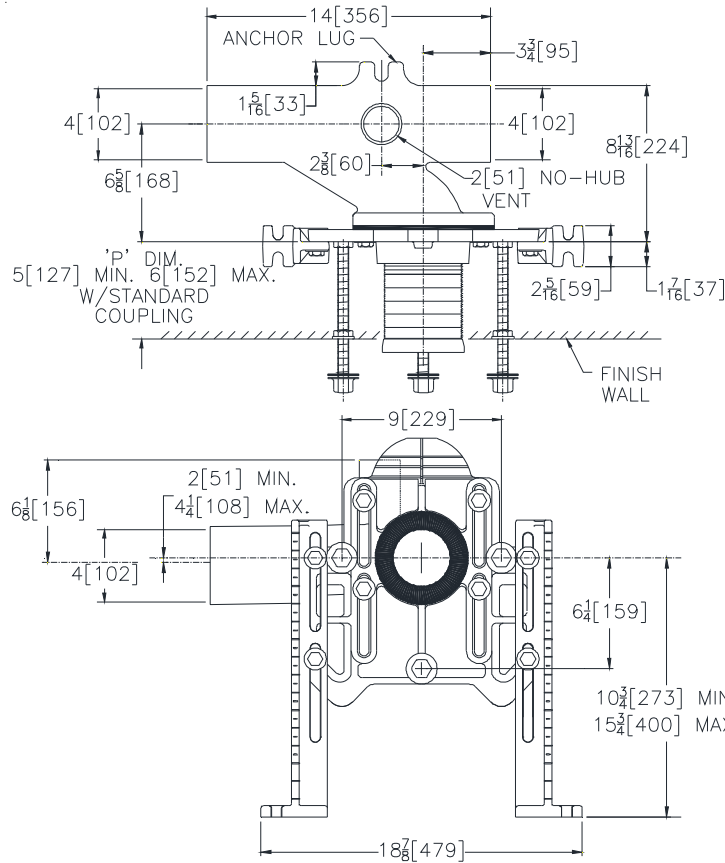




# Z1203-N-B

## ADJUSTABLE HORIZONTAL BLOWOUT NO-HUB

Dimensional Data (inches and [ mm ]) are Subject to Manufacturing Tolerances and Change Without Notice



Product Number	Approx. Wt. Lbs. [kg]
Z1203-NL4-B	67 [30]
Z1203-NR4-B	

**Note:**

1. Min. 'P' Dim. Obtainable = 2 [51] with cut standard coupling
2. Feet bolted to floor using min. 1/2 [13] dia. bolts and back slots on carrier feet.
3. Back anchor foot required for secure installation.

**ENGINEERING SPECIFICATION: ZURN Z1203-N( )4-B**

Adjustable, horizontal blowout water closet "Rigid System" with 4" [102mm] No-Hub connections. Complete with Dura-Coated cast iron right hand or left hand main fitting, with 2" [51mm] vent, adjustable gasketed face plate, universal floor mounted foot supports, corrosion resistant adjustable ABS coupling with integral test cap, fixture bolts, trim, stud protectors, rear anchor tie down, and bonded "Neo-Seal" gasket.

**OPTIONS** (Check/specify appropriate options)

- \_\_\_\_\_ Z1203-NR4-B 4 [102] No-Hub Blowout Right Hand Inlet with Flow to Left
- \_\_\_\_\_ Z1203-NL4-B 4 [102] No-Hub Blowout Left Hand Inlet with Flow to Right

**PREFIXES**

- \_\_\_\_\_ Z D.C.C.I. System with Zurn "ZZ" Adjustable Coupling\*
- \_\_\_\_\_ ZQ D.C.C.I. System with Non-Adjustable Coupling

**SUFFIXES**

- |           |   |            |   |
|-----------|---|------------|---|
| _____ -A  | Auxiliary Support Assembly (for 'P' Dim. Greater Than 18 [457])       | _____ -PF  | Pre-Fab Foot  |
| _____ -CC | Corrosion Resistant 6 [152] Long Cast Iron Coupling                   | _____ -PS  | Pre-Fab Slotted Foot  |
| _____ -CL | Coupling Length Other Than Standard 6 [152] (Specify Length Required) | _____ -RYK | Unistrut Pre-Fab Foot   |
| _____ -JC | 2 [51] Auxiliary Inlet with Sanitary Sweep                            | _____ -VP  | Vandal Proof Trim   |
| _____ -M  | Auxiliary Foot Support (for 'P' Dim. 10 - 18 [254 - 457])             | _____ -45  | Finishing Frame for Blowout Closet (See Z1200-FINFRAME-B)             |
|           |   | _____ -50  | Flush Valve Supply Support for Water Closets (See Z1200-SPLY-SPRT-WC) |

\* Regularly furnished unless otherwise specified.