

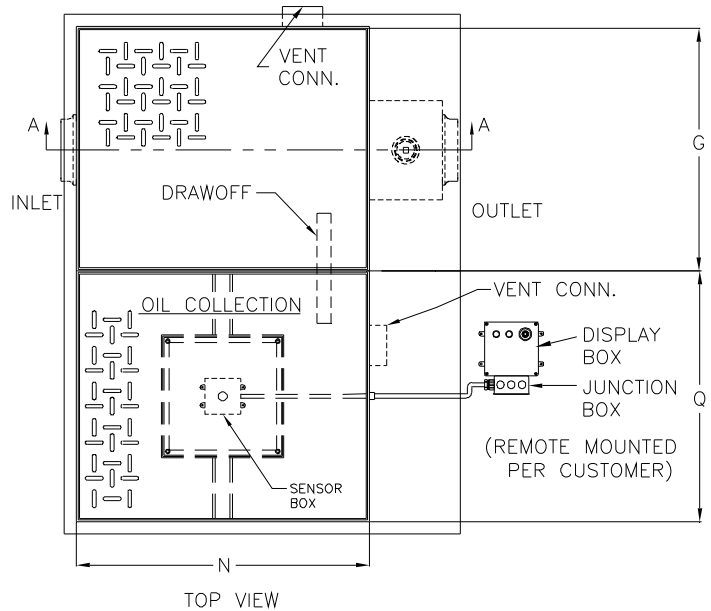
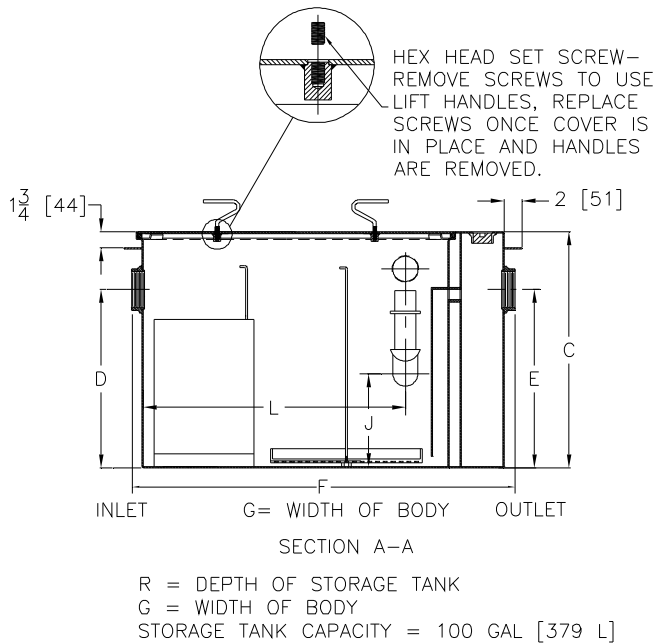


Z1188-144

LARGE CAPACITY OIL INTERCEPTOR W/ INTEGRAL STORAGE TANK, OIL LEVEL SENSOR, AND ANCHOR FLANGE

SPECIFICATION SHEET
TAG _____

Dimensional Data (inches or [mm]) are Subject to Manufacturing Tolerances and Change Without Notice



Flow Rate GPM[L]Min	Inlet/Outlet Size	Water Capacity Gal. [L]	App. Wt. Lbs. [Kg]	No. of Covers	
				Trap	Tank
75[284]	3[75]	65[181]	485[220]	1	1

Dimensions In Inches								
C	D/E	F	G	J	L	N	Q	R
34 3/4 [883]	18 1/2 [470]	36 [914]	28 5/8 [727]	8 [203]	25 1/4 [641]	32 1/2 [826]	28 5/8 [727]	55 1/4 [1130]

ENGINEERING SPECIFICATION: ZURN Z1188-144 Large capacity Acid Resistant Coated interior and exterior fabricated steel oil interceptor and integral storage tank with anchor flange, with a fiberglass sensor box containing a float oil level sensor, a fiberglass display box with one green power light, one red oil level light, audible alarm and junction box, bronze cleanout plug and visible double wall trap seal, removable combination pressure equalizing/flow diffusing baffle and sediment bucket, horizontal baffle, adjustable oil drawoff and vent connections. Secured gasketed non-skid heavy duty traffic covers, complete with flow control fitting. Regularly furnished with inlet and outlet in high position.

OPTIONS (Check/specify appropriate options)

PREFIXES

_____ **Z** Acid Resistant Coated Fabricated Steel*

Note:

1. Power supply 120V GFCI
2. Recommended Installations: Sitting on the floor or recessed in a pit only. (A pit installation requires that a drain or sump pump be installed to keep the pit relatively dry).

REV.	DATE: 9/22/06	C.N. NO. 95648
DWG. NO. P-15333	PRODUCT NO. Z1188-144	

*REGULARLY FURNISHED UNLESS OTHERWISE SPECIFIED