

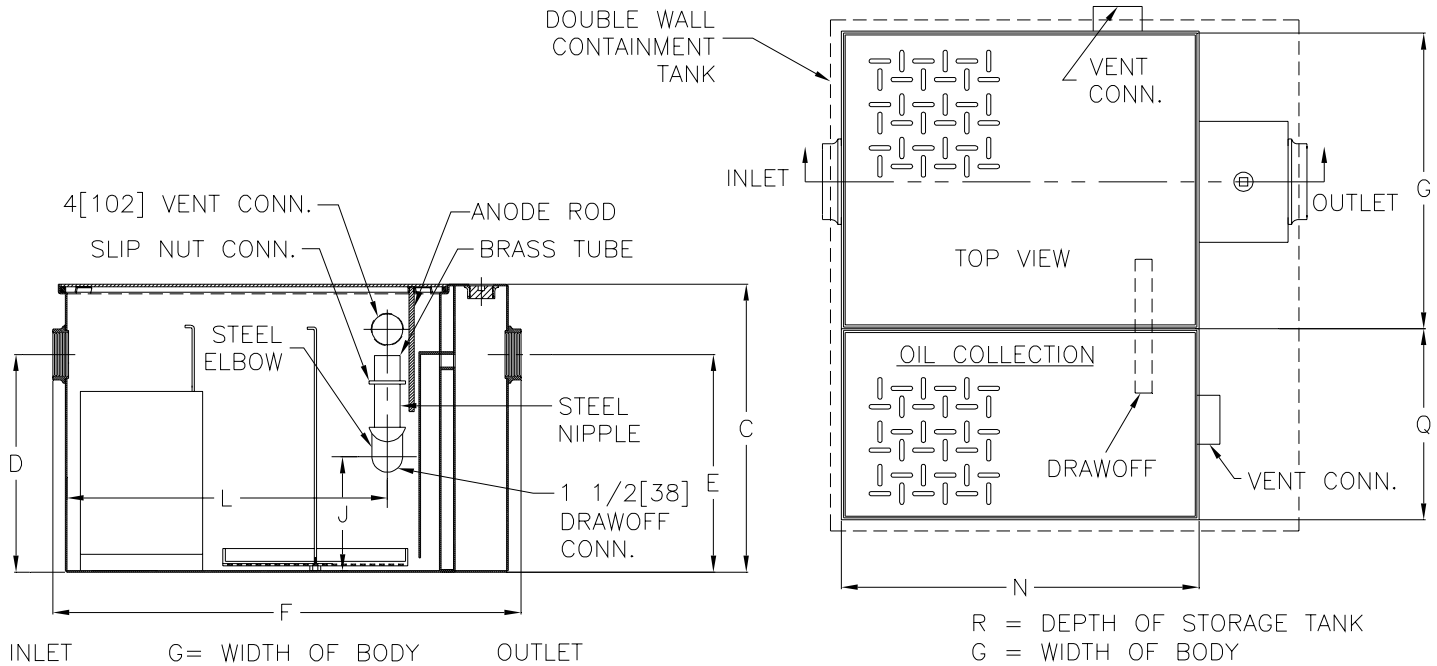


# Z1188-138 OIL INTERCEPTOR

SPECIFICATION SHEET

TAG \_\_\_\_\_

Dimensional Data (inches or [ mm ]) are Subject to Manufacturing Tolerances and Change Without Notice



Flow Rate GPM [L] Min.	Oil Storage Tank Cap. Gal. [L]	No. of Covers	
		Trap	Trap
300 [1136]	300 [1136]	2	2

Flow Rate GPM [L] Min	Inlet/ Outlet Size**	Water Capacity Gal. [L]	App. Wt. Lbs. [Kg.]	Dimension In Inches								
				C	D/E	F	G	J	L	N	Q	R
300 [1134]	10 [1254]	660 [2498]	3800 [1724]	94 1/8 [2391]	42 1/8 [1070]	80 [2032]	58 3/8 [1483]	20 5/8 [524]	65 5/8 [1667]	79 [2007]	46 [1168]	94 1/8 [2391]

**ENGINEERING SPECIFICATION:** ZURN Z1188-138 Large capacity Acid Resistant Coated interior and exterior fabricated steel oil interceptor, with bronze cleanout plug and visible double wall trap seal, removable combination pressure equalizing/flow diffusing baffle and sediment bucket, horizontal baffle, adjustable oil drawoff, anode rod, and 4 [102] vent connections. Secured gasketed non-skid heavy duty traffic cover rated at 10,000 lbs. [4536] kg. maximum safe live load. complete with flow control fitting, integral storage tank, and double wall containment tank. Regularly furnished with inlet and outlet in high position.

**OPTIONS** (Check/specify appropriate options)

**PREFIXES**

\_\_\_ **Z** Acid Resistant Coated Fabricated Steel\*

**SUFFIXES**

\_\_\_ **-K** Anchor flange 1 3/4 [44] down from top and 2 [51] wide. No extension required to accommodate -K.

\_\_\_ **-KC** Anchor flange 1 3/4 [44] down from top and 2 [51] wide with clamp collar.

Note:

1. Double wall construction will extend the overall length and width of the unit by 3 [76] per side and increase the overall depth by 3 [76].

\*REGULARLY FURNISHED UNLESS OTHERWISE SPECIFIED

REV.	DATE: 02/23/06	C.N. NO. 94818
DWG. NO. P-15252	PRODUCT NO. Z1188-138	

ZURN INDUSTRIES, INC. ♦ SPECIFICATION DRAINAGE OPERATION ♦ 1801 Pittsburgh Ave. ♦ Erie, PA 16514

Phone: 814/455-0921 ♦ Fax: 814/454-7929 ♦ World Wide Web: www.zurn.com

In Canada: ZURN INDUSTRIES LIMITED ♦ 3544 Nashua Drive ♦ Mississauga, Ontario L4V1L2 ♦ Phone: 905/405-8272 Fax: 905/405-1292