



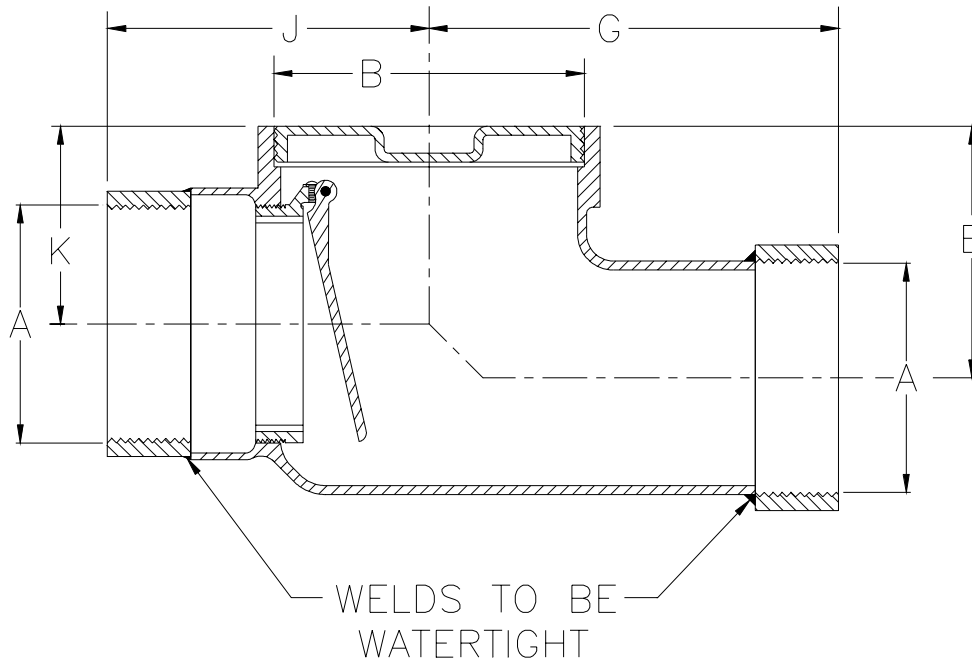
Z-1095-81

BACKWATER VALVE FLAPPER TYPE WITH THREADED FEMALE PIPE CONNECTIONS

SPECIFICATION SHEET

TAG _____

Dimensional Data (inches and [mm]) are Subject to Manufacturing Tolerances and Change Without Notice



Dimensions In Inches [mm]						Approx. Wt. Lbs. [kg]
Pipe Size		E	G	J	K	
A	B					
2 [50]	4 [100]	4 3/8 [111]	7 3/4 [197]	5 3/4 [146]	2 7/8 [73]	23 [10]
3 [75]	5 [125]	5 1/8 [130]	8 3/4 [222]	6 3/4 [171]	3 5/8 [92]	30 [14]
4 [100]	6 [150]	5 5/8 [143]	9 1/8 [232]	7 3/8 [187]	4 1/8 [105]	34 [15]
5 [125]	7 [175]	5 1/2 [140]	10 1/8 [257]	7 7/8 [200]	4 [102]	50 [23]
6 [150]	8 [200]	6 [156]	10 5/8 [270]	8 3/8 [213]	4 1/2 [114]	57 [26]
8 [200]	10 [250]	7 1/2 [190]	12 1/8 [308]	9 5/8 [244]	6 [152]	79 [36]
10 [250]	12 [300]		13 [330]	11 1/8 [283]	7 [178]	102 [46]

ENGINEERING SPECIFICATION: ZURN Z-1095-81 Backwater Valve, Dura-Coated cast iron body, female threaded inlet and offset female threaded outlet, bronze threaded cover, automatic type valve seat and flapper which hangs closed during periods of non-operation

CONNECTIONS (Check/specify appropriate options)

PIPE SIZE

2 thru 6, 8, 10 [50 thru 150, 200, 250]

(Specify size/type) **CONNECTION**

- _____ 2 IP X 2 IP Threaded x Threaded
- _____ 3 IP X 3 IP Threaded x Threaded
- _____ 4 IP X 4 IP Threaded x Threaded
- _____ 5 IP X 5 IP Threaded x Threaded
- _____ 6 IP X 6 IP Threaded x Threaded
- _____ 8 IP X 8 IP Threaded x Threaded
- _____ 10 IP X 10 IP Threaded x Threaded

PREFIXES

_____ Z- D.C.C.I. Body*

SUFFIXES

- _____ -BC Bolted Cover
- _____ -FC Adjustable Floor Cleanout
(2 thru 6, 8 [50 thru 150, 200] only)
- _____ -G Galvanized Cast Iron

*REGULARLY FURNISHED UNLESS OTHERWISE SPECIFIED

REV.	DATE: 6/27/01	C.N. NO. 87715
DWG. NO. P-14833 PRODUCT NO. Z-1095-81		