



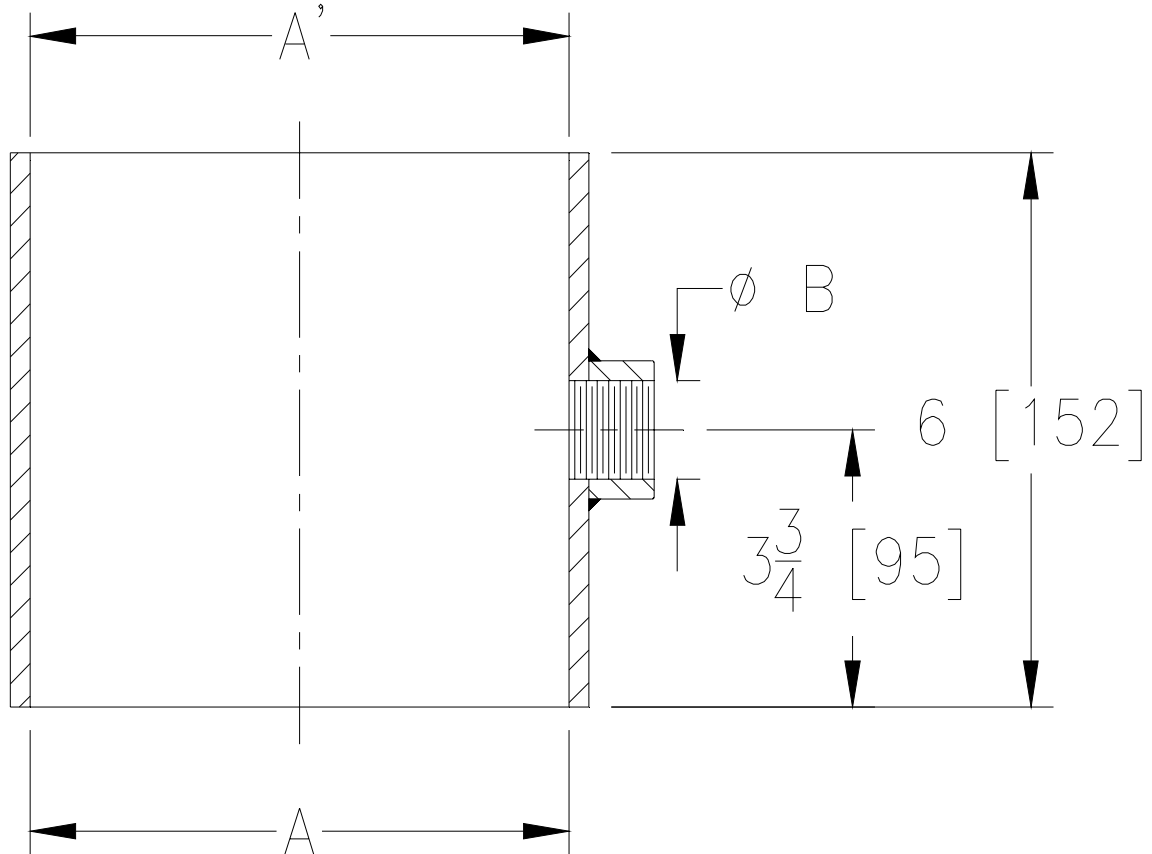
Z1023-77

STAINLESS STEEL TRAP PRIMER CONNECTION W/ PIPE COUPLING

SPECIFICATION SHEET

TAG _____

Dimensional Data (inches and [mm]) are Subject to Manufacturing Tolerances and Change Without Notice



Dimensions In Inches		Approx. Wt. Lbs. [kg]
Pipe Size		
A' x A NH x NH or NPT x NH	B	
2 x 2 [51 x 51]	1/2 [13]	2 [1]
3 x 3 [76 x 76]	1/2 [13]	4 [2]
4 x 4 [102 x 102]	1/2 [13]	6 [3]

ENGINEERING SPECIFICATION: ZURN Z1023-77

No-Hub Trap Primer Connection, Fabricated Stainless Steel body with 1/2 [13] female threaded half pipe coupling.

CONNECTIONS (Check/specify appropriate options)

PIPE SIZE

2,3,4,[51, 76, 102] _____

CONNECTION

NH X NH No-Hub x No-Hub

PREFIXES

____ Z Fabricated Stainless Steel Body*

SUFFIXES

____ -3 3/4 [19] IP Primer Connection

REV.	DATE: 06/15/2011	C.N. NO. 121422
DWG. NO. 306279	PRODUCT NO. Z1023-77	

*REGULARLY FURNISHED UNLESS OTHERWISE SPECIFIED