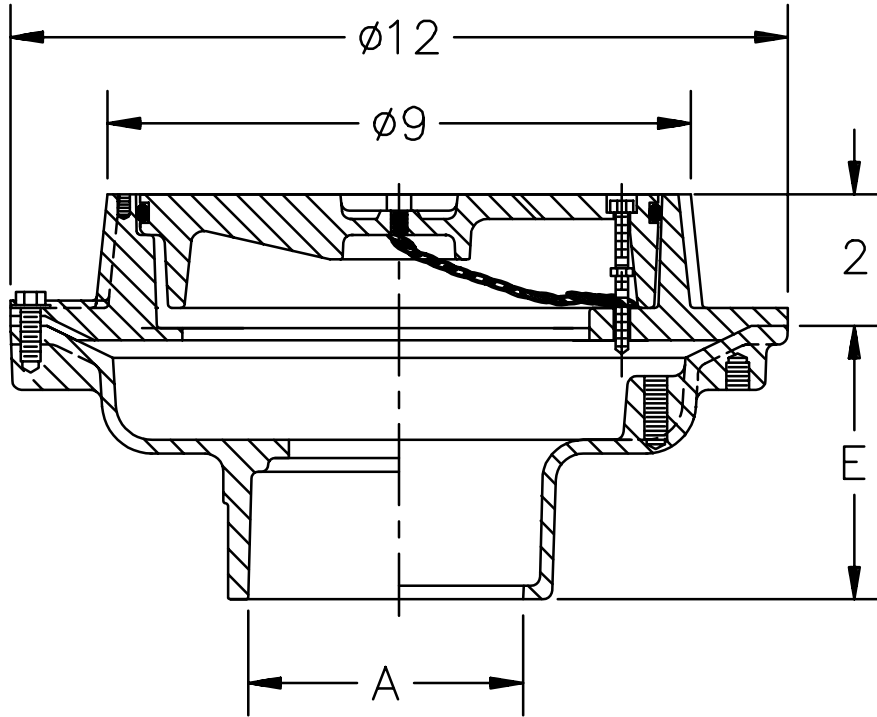




Z-679-78
9" DIAMETER EXTRA HEAVY
DUTY DRAIN

TAG _____

Dimensional Data (inches and [mm]) are Subject to Manufacturing Tolerances and Change Without Notice



A- Pipe Size Inches	Approx. Wt. Lbs.
2-3-4	70

ENGINEERING SPECIFICATION Z-679-78

9" Diameter top Selecto-Line floor drain combination consisting of two Dura-Coated cast iron bodies with bottom outlets, seepage pans and combination membrane flashing clamps and frames that receive an interchangeable extra heavy duty cover with lift ring.

OPTIONS (Check/specify appropriate options)

OUTLET (Specify type)

- _____ **IC** Inside Caulk
- _____ **IG** Inside Caulk w/Sealtrol Gskt.
- _____ **IP** Threaded
- _____ **NH** No-Hub
- _____ **NL** Neo-Loc

PIPE SIZE (Specify size)

- _____ 2",3",4"
- _____ 2",3",4"
- _____ 2",3",4"
- _____ 2",3",4"
- _____ 2",3",4"

**'E' BODY HT.
DIMENSION**

- 3-3/4"
- 3-3/4"
- 2-3/4"
- 4-3/4"
- 3-1/2"

PREFIXES

- _____ **Z-** D.C.C.I. Body, Cover*
- _____ **ZB-** D.C.C.I. Body (Add 3/16" to 2" Dim. & 5/8" to 9" Dim.)
- _____ **ZN-** D.C.C.I. Body (Add 3/16" to 2" Dim. & 5/8" to 9" Dim.)

SUFFIXES

- _____ **-A** Acid Resisting Epoxy Coated Finish
- _____ **-DG** Duresist Cover
- _____ **-G** Galvanized Cast Iron
- _____ **-S** Secondary Strainer

REV.	DATE: 2/4/93	C.N. NO. 68862
DWG. NO. P-13791 PRODUCT NO. Z-679-78		

*REGULARLY FURNISHED UNLESS OTHERWISE SPECIFIED