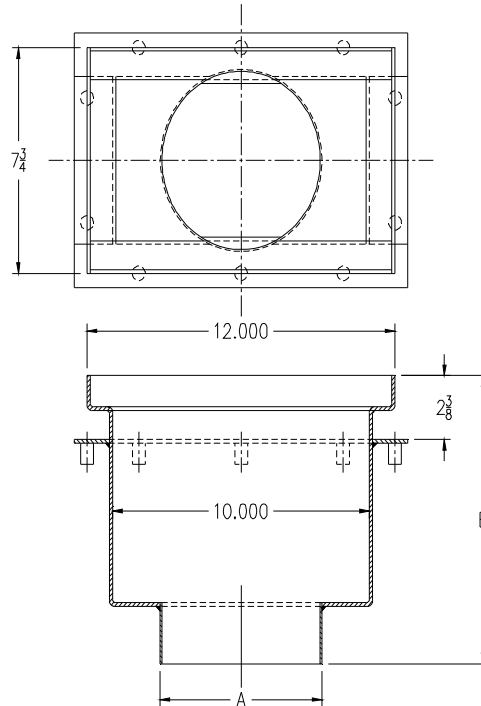




**Z1721-77**  
**6 X 12 [152 X 305] OPEN SIGHT**  
**DRIP DRAIN**

SPECIFICATION SHEET

TAG \_\_\_\_\_



A- Pipe Size In.	Approx. Wt. Lbs. [kg]
6 [152]	30 [14]

**ENGINEERING SPECIFICATION: ZURN Z1721-77**  
 6 x 12 [152 x 305] Open sight drip drain with Type 304 (CF8) fabricated stainless steel body with plain finish.

**OPTIONS** (Check/specify appropriate options)

**PIPE SIZE**  
6 [152]

**OUTLET**  
 \_\_\_\_\_ NH    No-Hub

**'E' BODY HT. DIM.**  
10 [254]

**PREFIXES**

- \_\_\_\_\_ Z    Type 304 (CF8) Stainless Steel Body\*
- \_\_\_\_\_ ZM    Type 316 (CF8M) Stainless Steel Body

**SUFFIXES**

- \_\_\_\_\_ -DB    Stainless Steel Dome Bottom Strainer
- \_\_\_\_\_ -FG    Flush Grate

REV.	DATE: 9/8/11	C.N. NO. 122070
DWG. NO. 307515	PRODUCT NO. Z1721-77	

\*REGULARLY FURNISHED UNLESS OTHERWISE SPECIFIED