



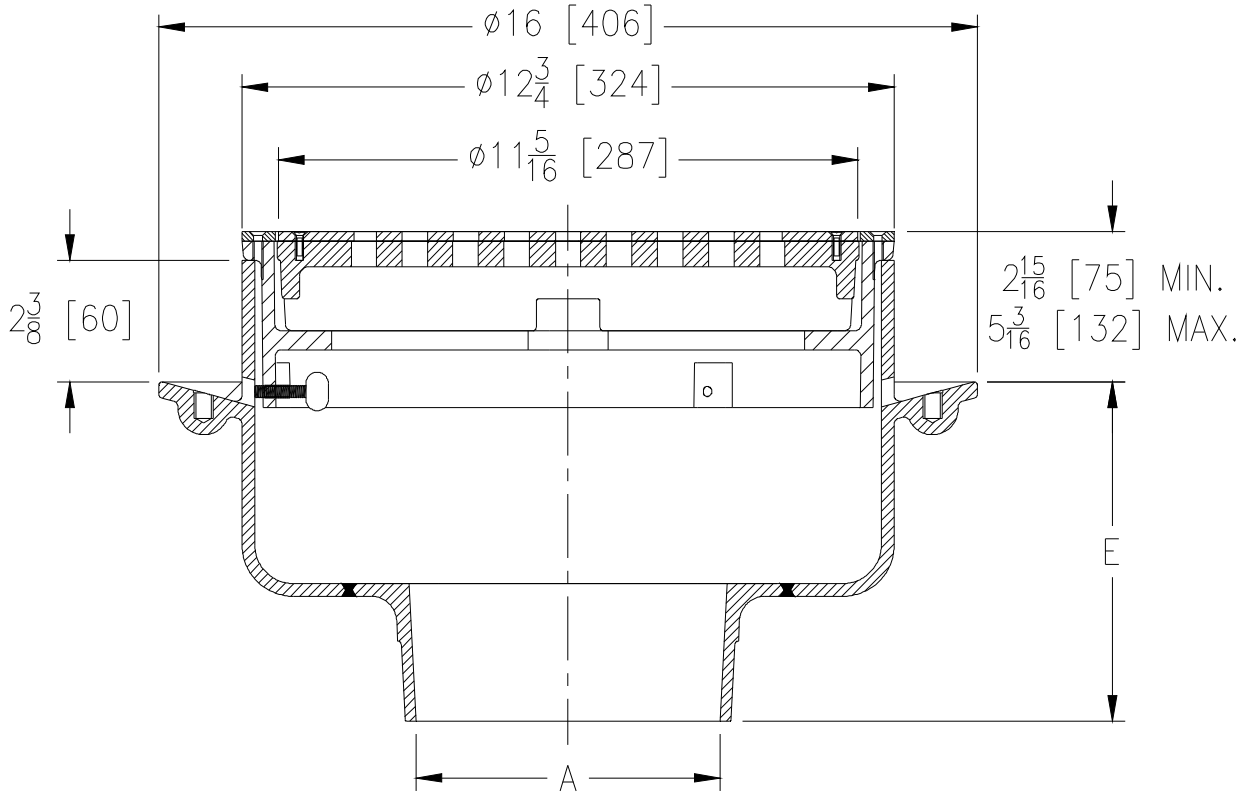
ZB521-86

12[305] DIAMETER ADJUSTABLE NO-HUB CONNECTION HEAVY-DUTY DRAIN W/HEEL-PROOF & VANDAL-PROOF GRATE

SPECIFICATION SHEET

TAG _____

Dimensional Data (inches and [mm]) are Subject to Manufacturing Tolerances and Change Without Notice



A Pipe Size In. [mm]	Approx. Wt. Lbs. [kg]	Grate Open Area Sq. In. [cm ²]
6 [152]	60 [27]	30 [194]

ENGINEERING SPECIFICATION: ZURN ZB521-86

12" [305mm] Diameter top drain, Dura-Coated cast iron body with No-Hub bottom outlet, seepage pan, adjustable extension frame with heavy-duty tractor grate, and heel-proof veneer.

OPTIONS (Check/specify appropriate options)

PIPE SIZE

6 [152]

(Specify size/type) OUTLET

___ NH No-Hub

'E' DIM.

9-9/16 [243]

PREFIXES

___ ZB D.C.C.I. Body with Polished Bronze Top

SUFFIXES

___ -Y Sediment Bucket

* Regularly furnished unless otherwise specified.