

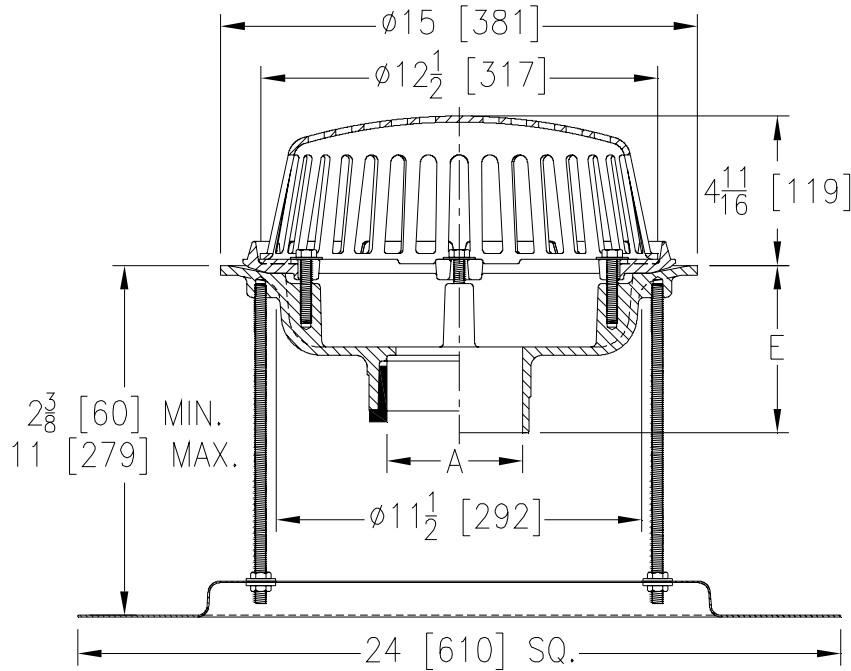


Z100-172
15 [381] DIAMETER MAIN ROOF DRAIN
W/ STABILIZER PLATE

SPECIFICATION SHEET

TAG _____

Dimensional Data (inches and [mm]) are Subject to Manufacturing Tolerances and Change Without Notice



A Pipe Size In.	Approx. Wt. Lbs. [kg]	Dome Open Area Sq. In. [cm ²]
2-3-4 [51-76-102]	36 [16]	103 [665]
5-6 [127-152]	37 [17]	
8 [203]	38 [17]	

ENGINEERING SPECIFICATION: ZURN Z100-172

15 [381] Diameter roof drain. Dura-Coated cast iron body with combination membrane flashing clamp/gravel guard, stabilizer plate, and low silhouette Poly-Dome.

OPTIONS (Check/specify appropriate options)

PIPE SIZE

- 2 thru 6,8 [51 thru 152,203]
- 2 thru 6,8 [51 thru 152,203]
- 2 thru 6,8 [51 thru 152,203]
- 2,3,4 [51,76,102]
- 6 [152]

(Specify size/type) **OUTLET**

- _____ IC Inside Caulk
- _____ IP Threaded
- _____ NH No-Hub
- _____ NL Neo-Loc
- _____ NL Neo-Loc

E BODY HT. DIM.

- 5 1/4 [133]
- 3 3/4 [95]
- 5 1/4 [133]
- 4 9/16 [116]
- 5 7/16 [112]

PREFIXES

- _____ Z D.C.C.I. Body with Poly-Dome*
- _____ ZA D.C.C.I. Body with Aluminum Dome
- _____ ZC D.C.C.I. Body with Cast Iron Dome
- _____ ZRB D.C.C.I. Body with Plain Bronze Dome

SUFFIXES

- | | |
|---|---|
| _____ -AR Acid Resistant Epoxy Coated | _____ -TC Neo-Loc Test Cap Gasket |
| _____ -AW 3/4 [19] to 4 [102] Adj. Water Level Regulator
(Specify Height) (ZC Only) | (2 - 4 [51 - 102] NL Bottom Outlet Only) |
| _____ -BS Bronze Mesh Screen Over Dome | _____ -VP Vandal-Proof Secured Top |
| _____ -FG Flush Grate (Replaces Dome Strainer) | _____ -W2 2 [51] Internal Water Dam |
| _____ -G Galvanized Cast Iron | _____ -W3 3 [76] Internal Water Dam |
| _____ -GD Galvanized Cast Iron Dome (ZC Only) | _____ -W4 4 [102] Internal Water Dam |
| _____ -HD 6 3/4 [171] High Aluminum Dome Strainer
(148 Sq. In. [955 cm ²] Open Area) (ZA Only) | _____ -XJ Vertical Expansion Joint (See Z190) |
| _____ -SC Secondary Clamp Collar | _____ -89 2 [51] High External Water Dam |
| _____ -SS Stainless Steel Mesh Screen Over Dome | |

*REGULARLY FURNISHED UNLESS OTHERWISE SPECIFIED

REV. A DATE: 5/19/09 C.N. NO. 120009

DWG. NO. P-15268 PRODUCT NO. Z100-172