



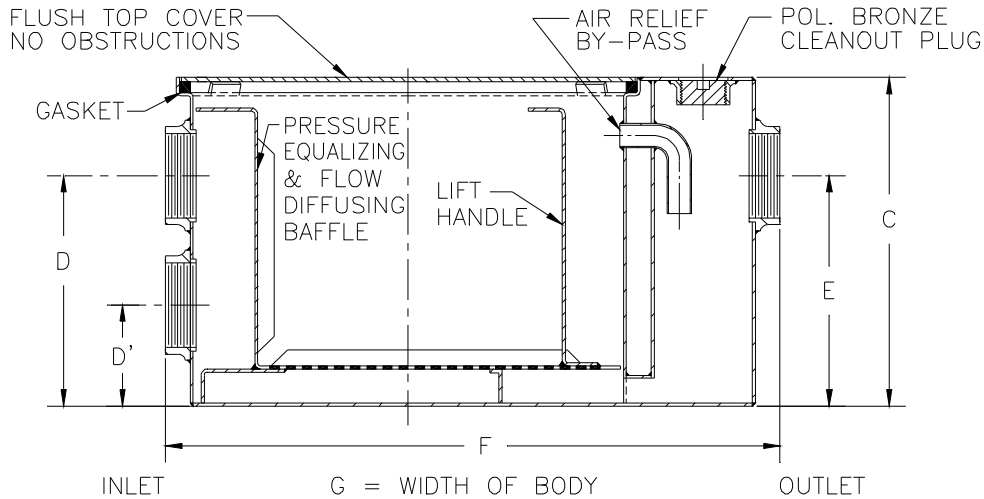
Z1170-DI

GREASE INTERCEPTOR W/ DUAL HIGH/LOW INLET

SPECIFICATION SHEET

TAG _____

Dimensional Data (inches and [mm]) are Subject to Manufacturing Tolerances and Change Without Notice



Size	Inlet/ Outlet Size**	Flow Rate G.P.M. [L]	Capacity		Approx. Wt. Lbs. [kg]	Dimensions in Inches				
			Water Gal. [L]	Grease Lbs. [kg]		C	D/E	D'	F	G
100	2 [51]	4 [15]	3 [11]	8 [4]	42 [19]	10 [254]	7 1/4 [184]	3 3/4 [95]	20 3/8 [518]	9 7/8 [251]
200		7 [26]	5 [19]	14 [6]	53 [24]	11 1/4 [286]	8 1/8 [206]	3 5/8 [92]	21 3/4 [552]	11 7/8 [302]
300		10 [38]	6 [23]	20 [9]	66 [30]	11 3/4 [298]	8 1/4 [210]	3 3/4 [95]	25 1/8 [638]	14 [356]
400	3 [76]	15 [57]	10 [38]	30 [14]	83 [38]	13 3/8 [340]	9 3/8 [238]	3 7/8 [98]	27 1/8 [689]	16 3/4 [425]
500		20 [76]	16 [60]	40 [18]	99 [45]	15 [381]	11 3/4 [298]	4 3/4 [121]	30 [762]	17 1/4 [438]
600		25 [94]	21 [79]	50 [23]	124 [56]	17 [432]	12 1/2 [318]	4 3/4 [121]	32 1/4 [819]	19 7/8 [505]
700		35 [132]	30 [113]	70 [32]	151 [68]	18 3/4 [476]	14 1/4 [362]	4 1/2 [114]	34 1/8 [867]	22 1/2 [572]
800		50 [189]	40 [151]	100 [45]	180 [82]	21 1/2 [546]	16 [406]	4 1/2 [114]	36 [914]	24 1/2 [622]

ENGINEERING SPECIFICATION: ZURN Z1170-DI

Acid Resistant Coated interior and exterior fabricated steel grease interceptor, PDI, rated at _____ GPM and _____ Lbs. grease capacity, with internal air relief by-pass, bronze cleanout plug and visible double wall trap seal with removable combination pressure equalizing/flow diffusing baffle and sediment tray. Gasketed non-skid secured cover complete with Z-1108 flow control fitting. Regularly furnished with a dual high/low inlet and outlet connection. Note: Location of outlet from bottom of interceptor cannot be changed.

PREFIXES

_____ Z Acid Resistant Coated Fabricated Steel*

SUFFIXES

- _____ -E Acid Resistant Coated Interior and exterior fabricated steel extension section. (Specify 'C' Dim. required) for recessed installation.
- _____ -HD Heavy-Duty Cover rated at 10,000 lbs. [4536 kg.] maximum safe live load. A 3 [76] minimum extension height is required when Heavy-Duty Cover (-HD) option is specified.
- _____ -K Anchor flange 1 3/4 [44] down from top and 2 [51] wide. A 3 [76] minimum extension height is required when anchor flange (-K) option is specified. (Specify 'C' Dim. height required.)
- _____ -KC Anchor flange 1 3/4 [44] down from top and 2 [51] wide with clamp collar. A 3 [76] minimum extension height is required when anchor flange (-K) option is specified.
- _____ -L Angle type (Z-1108-L) flow control device.
- _____ -R Recessing receiver for recessed installation is equipped with adjustable support brackets and gasketed non-skid cover with covered recessed lift handle.
- _____ -RE Recessing receiver enclosed type for recessed installation. Furnished with adjustable support brackets and gasketed non-skid secured cover with covered recessed lift handle.
- _____ -T Cover recessed for tile/terrazzo. A 3 [76] minimum extension height is required. (Specify 'C' Dim. and required recess depth - 1/8 [3], 3/4 [19], or 1 1/4 [32]).
- _____ -Y Removable lift out sediment bucket.

** Inlet and outlet sizes shown indicate standard operating sizes and flow control setting. Size #300 will have 3 [76] connections reduced to 2 [51] and sizes #600 thru #800 will have 4 [102] connections reduced to 3 [76] as standard. If changed, flow control must be adjusted accordingly.

REV. B	DATE: 03/27/09	C.N. NO. 99853
DWG. NO. 59574	PRODUCT NO. Z1170-DI	

*REGULARLY FURNISHED UNLESS OTHERWISE SPECIFIED