

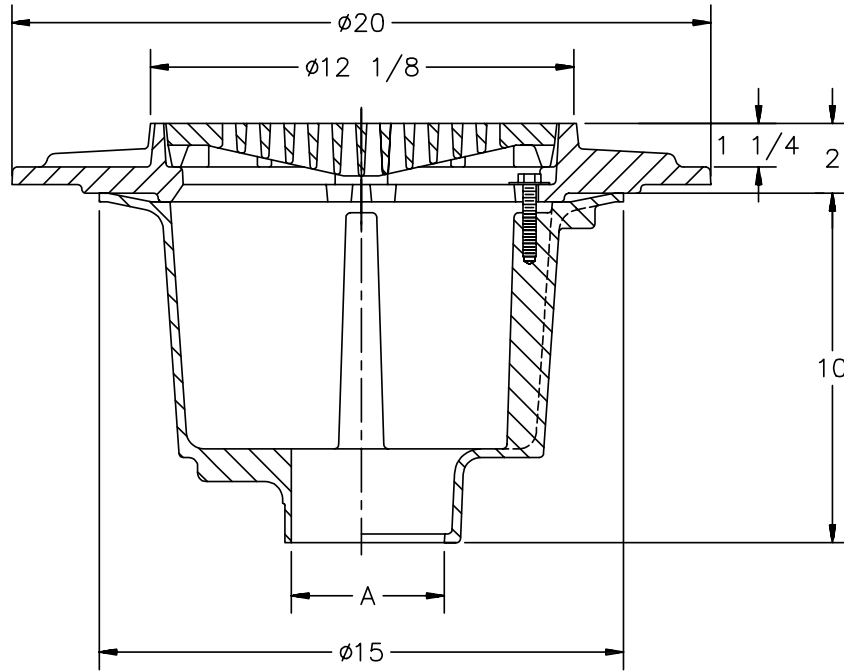


Z-538-76

12" MEDIUM DUTY DRAIN WITH DEEP SUMP

TAG _____

Dimensional Data (inches or [mm]) are Subject to Manufacturing Tolerances and Change Without Notice



A- Pipe Size In.	Approx. Wt. Lbs.	Grate Open Area Sq. In.
3-4-5-6	78	30
8	80	

ENGINEERING SPECIFICATION: ZURN Z-538-76 12" Diameter top drain. Dura-Coated cast iron deep sump body with bottom outlet and seepage pan, heavy duty support flange with medium duty slotted grate.

OPTIONS (Check/specify appropriate options)

OUTLET (Specify type)

- _____ **IC** Inside Caulk
- _____ **IG** Inside Caulk w/Sealtrol Gskt.
- _____ **NH** No-Hub

PIPE SIZE (Specify size)

- _____ 3" thru,6"
- _____ 3", 4",6"
- _____ 3" thru 6",8"

PREFIXES

- _____ **Z-** D.C.C.I. Body and Grate*
- _____ **ZB-** D.C.C.I. Body with Polished Bronze Grate (Add 3/16" to 2" Dim.)
- _____ **ZN-** D.C.C.I. Body with Polished Nickel Bronze Grate (Add 3/16" to 2" Dim.)

SUFFIXES

- _____ **-G** Galvanized Cast Iron
- _____ **-VP** Vandal Proof Secured Top

REV.	DATE: 2/28/95	C.N. NO. 70924
DWG. NO. P-14143 PRODUCT NO. Z-538-76		

*REGULARLY FURNISHED UNLESS OTHERWISE SPECIFIED