



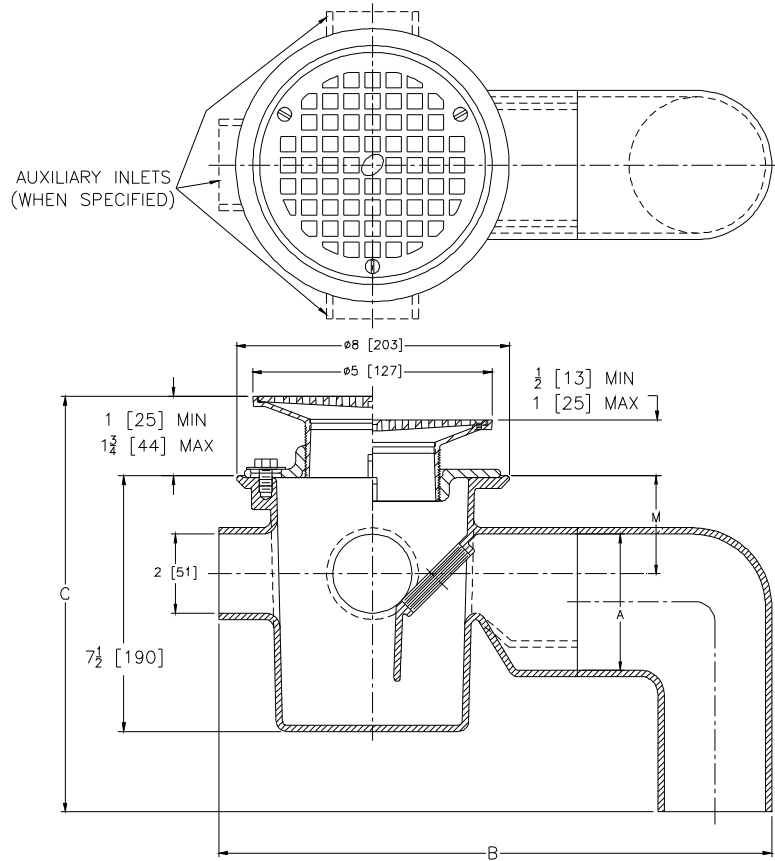
Z356-81

MULTI-INLET ADJUSTABLE FLOOR DRAIN WITH TRAP W/ BOTTOM OUTLET

SPECIFICATION SHEET

TAG _____

Dimensional Data (inches and [mm]) are Subject to Manufacturing Tolerances and Change Without Notice



Dimensions in Inches [mm]				Approx. Wt. Lbs. [kg]
A Pipe Size	B	C	M	
3 [76]	16-1/16 [408]	10-3/8 [264]	3-3/8 [86]	18 [8]
4 [102]	16-13/16 [427]	11-7/8 [302]	3-23/32 [94]	

ENGINEERING SPECIFICATION: ZURN ZN356-81
 Multi-Inlet adjustable floor drain with trap, Dura-Coated cast iron body with integral trap seal, complete with plastic cleanout plug, invertable collar and 5" [127mm] round, polished nickel bronze adjustable top, and bottom outlet.

OPTIONS (Check/specify appropriate options)

PIPE SIZE

3,4 [7,102]

(Specify size/type) **OUTLET**

___ NH No-Hub

PREFIXES

- ___ ZB D.C.C.I. Body w/Polished Bronze Top
- ___ ZN D.C.C.I. Body w/Polished Nickel Bronze Top*

SUFFIXES

- ___ -AR Acid Resisting Epoxy Coated Cast Iron
- ___ -BP Bronze Plug
- ___ -G Galvanized Cast Iron
- ___ -J Auxiliary Inlet Connection (Opposite Outlet)
- ___ -J2 Two (2) Auxiliary Inlet Connections
(1 Opposite Outlet, 1 Left Side Facing Outlet)
- ___ -J3 Three (3) Auxiliary Inlet Connections
- ___ -PC Protective Cover
- ___ -LT Less Trapseal (plug)
- ___ -VP Vandal-Proof Secured Top

* Regularly furnished unless otherwise specified.