



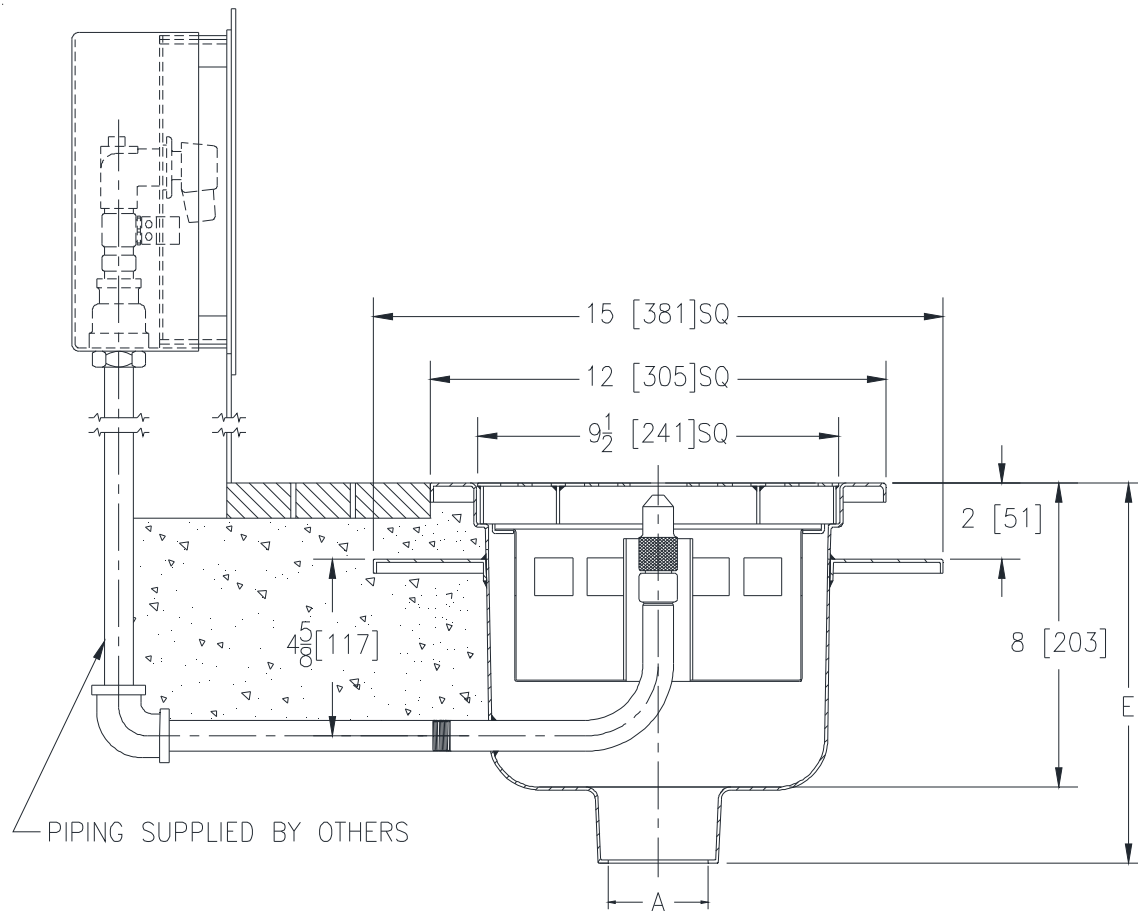
# Z1982-WB

12 X 12 [305 X 305] STAINLESS STEEL SANI-FLOR CAN  
WASH DRAIN W/ WATER SUPPLY CONTROL BOX

SPECIFICATION SHEET

TAG \_\_\_\_\_

Dimensional Data (inches and [ mm ]) are Subject to Manufacturing Tolerances and Change Without Notice



A Pipe Size In. [mm]	Approx Wt. Lbs. [kg]	Grate Open Area Sq. In. [cm <sup>2</sup> ]
3,4 [76,102]	62 [27]	20 [129]

**ENGINEERING SPECIFICATION: ZURN Z1982-WB**  
Sani-Flor can wash drain, 12" x 12" x 8" [305mm x 305mm x 203mm] deep fabricated stainless steel body with bottom outlet, anchor pan, medium duty stainless steel loose set grate, with standing sediment bucket. Complete with chrome plated bronze spray nozzle and water supply assembly along with a water supply control box.

**OPTIONS** (Check/specify appropriate options)

**PIPE SIZE** (Specify size/type) **OUTLET** **'E' BODY HT. DIMENSION**  
 3,4 [76,102] \_\_\_\_\_ NH No-Hub 10 [254]

**PREFIXES**  
 \_\_\_ Z All Type 304 Stainless Steel

**SUFFIXES**  
 \_\_\_ -C Flashing Clamp Collar  
 \_\_\_ -11 Vandal Proof Secured Grate  
 \_\_\_ -31 Stainless Steel Mesh Liner for Bucket

\* Regularly furnished unless otherwise specified.