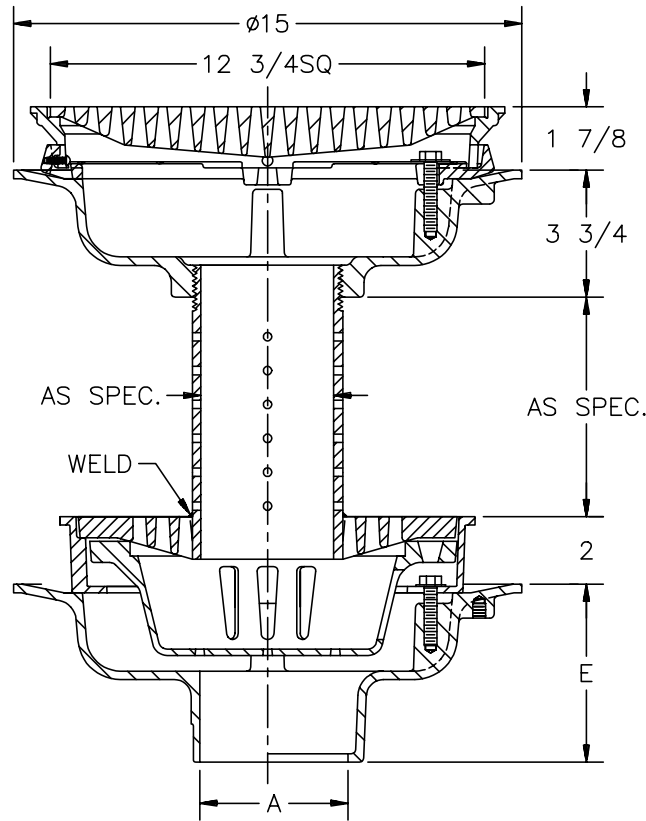




# Z-541-93 ISOLATION DECK DRAIN

TAG \_\_\_\_\_

Dimensional Data (inches and [ mm ]) are Subject to Manufacturing Tolerances and Change Without Notice



A- Pipe Size In.	Approx. Wt. Lbs.	Grate Open Area Sq. In.
2-3-4	85	44
5-6		

**ENGINEERING SPECIFICATION:** ZURN Z-541-93 Dura-Coated cast iron upper and lower bodies, with bottom outlet, upper body with promenade frame and heavy-duty grate, perforated standpipe and combination membrane flashing clamp/gravel guard. Lower body with seepage pan and combination membrane flashing clamp and frame for anti-tilt heavy duty slotted grate with suspended sediment bucket

**OPTIONS** (Check/specify appropriate options)

**OUTLET** (Specify type)

- \_\_\_ **IC** Inside Caulk
- \_\_\_ **IG** Inside Caulk w/Sealtrol Gskt.
- \_\_\_ **IP** Threaded
- \_\_\_ **NH** No-Hub
- \_\_\_ **NL** Neo-Loc
- \_\_\_ **NL** Neo-Loc

**PIPE SIZE** (Specify size)

- \_\_\_ 2" thru 6"
- \_\_\_ 2",3",4",6"
- \_\_\_ 2" thru 6"
- \_\_\_ 2" thru 6"
- \_\_\_ 2" thru 6"
- \_\_\_ 5",6"

**'E' BODY HT. DIMENSION**

- 5-1/4"
- 5-1/4"
- 3-3/4"
- 5-1/4"
- 4-5/8"
- 5-1/2"

**PREFIXES**

- \_\_\_ **Z-** D.C.C.I. Body and Grate\*
- \_\_\_ **ZB-** D.C.C.I. Body with Polished Bronze Grate (Add 3/16" to 4-1/4" & 5-1/4" Dim)
- \_\_\_ **ZN-** D.C.C.I. Body with Polished Nickel Bronze Grate (Add 3/16" to 4-1/4" & 5-1/4" Dim.)

**SUFFIXES**

- \_\_\_ **-C** Underdeck Clamp (Lower Body)
- \_\_\_ **-DX** Dex-o-tex Flange (Upper Body)
- \_\_\_ **-G** Galvanized Cast Iron
- \_\_\_ **-R** Sump Receiver (Lower Body)
- \_\_\_ **-VP** Vandal Proof Secured Top

\*REGULARLY FURNISHED UNLESS OTHERWISE SPECIFIED

<b>REV.</b>	<b>DATE: 9/9/93</b>	<b>C.N. NO. 69214</b>
<b>DWG. NO. P-13861 PRODUCT NO. Z-541-93</b>		

ZURN INDUSTRIES, INC. ♦ SPECIFICATION DRAINAGE OPERATION ♦ 1801 Pittsburgh Ave. ♦ Erie, PA 16514

Phone: 814455-0921 ♦ Fax: 814454-7929 ♦ World Wide Web: www.zurn.com

In Canada: ZURN INDUSTRIES LIMITED ♦ 3544 Nashua Drive ♦ Mississauga, Ontario L4V1L2 ♦ Phone: 905405-8272 Fax: 905405-1292