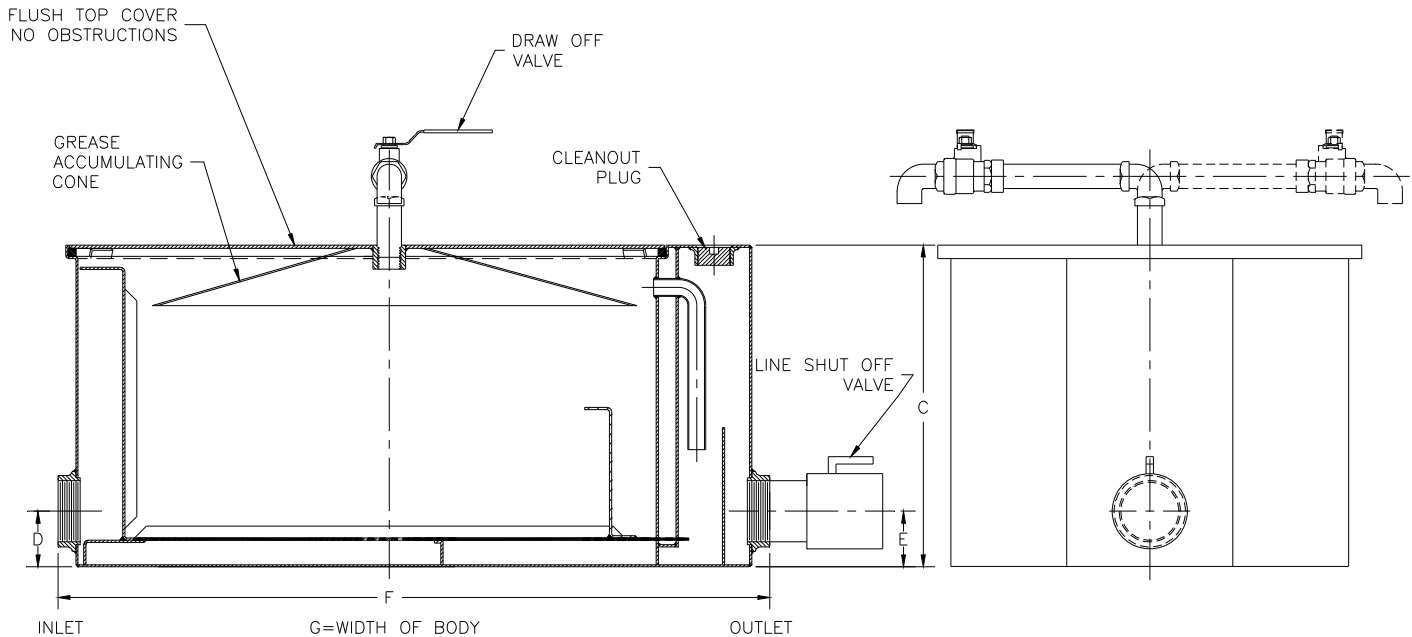




Z-1173-86 LOW PROFILE GREASETRAP WITH ACCUMULATING CONE AND IN LINE SHUTOFF VALVE

TAG _____

Dimensional Data (inches and [mm]) are Subject to Manufacturing Tolerances and Change Without Notice



Size	Inlet/ Outlet Size**	Flow Rate G.P.M. [L]	Capacity		Approx. Wt. Lbs. [kg]	Dimensions in Inches [mm]			
			Water Gal. [L]	Grease Lbs. [kg]		C	D/E	F	G
500	3 [75]	20 [74]	15 [57]	40 [17]	102 [44]	10 [254]	3 1/8 [79]	31 [787]	21 1/8 [537]
700		35 [130]	30 [114]	70 [30]	172 [74]	10 3/4 [273]	3 1/8 [79]	42 1/8 [1070]	29 3/8 [746]
800		50 [186]	45 [171]	100 [43]	210 [90]	16 [406]	10 [254]	49 1/2 [1257]	29 3/8 [746]

ENGINEERING SPECIFICATION: ZURN Z-1173-86 Acid Resistant Coated interior and exterior fabricated steel low type grease interceptor, rated at ___ GPM and ___ Lbs. grease capacity, with internal air relief by-pass, bronze cleanout plug and visible double wall trap seal with removable combination pressure equalizing/flow diffusing baffle and sediment tray. Gasketed non-skid secured cover with grease accumulating cone, piping, grease draw-off valve, and an inline closure valve, Complete with Z-1108 flow control fitting. Regularly furnished with 3" low inlet and outlet connections. **

PREFIXES

___ Z- Acid Resistant Coated Fabricated Steel*

SUFFIXES

___ -L- Angle type (Z-1108-L) flow control device.

REV. A DATE: 11/22/99 C.N. NO. 84014
DWG. NO. P-14427 PRODUCT NO. Z-1173-86

*REGULARLY FURNISHED UNLESS OTHERWISE SPECIFIED