



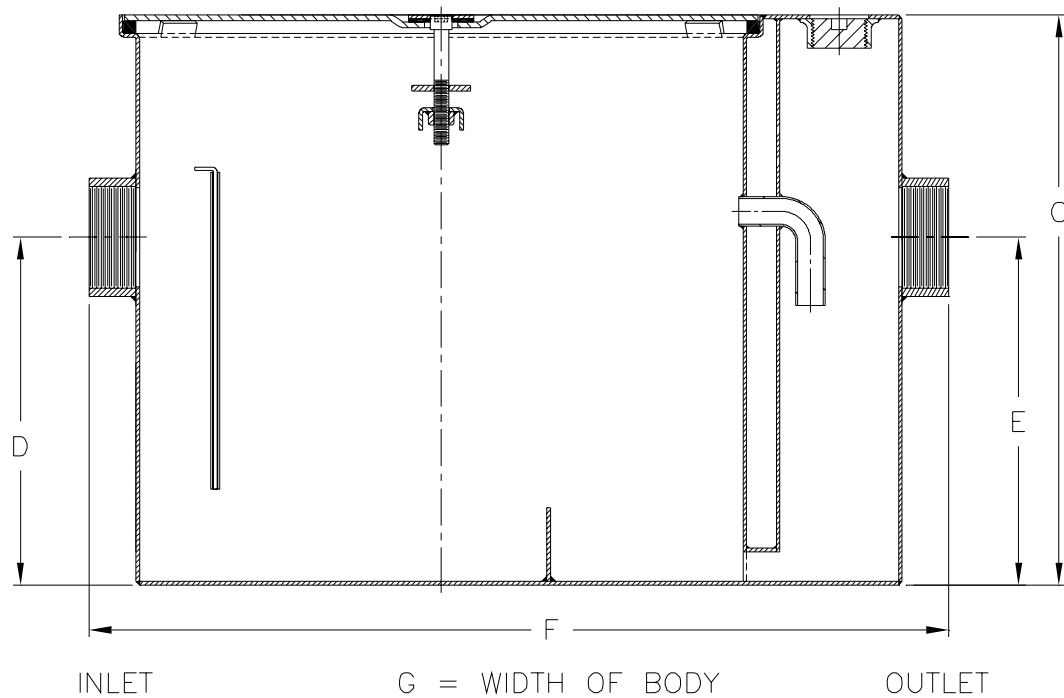
Z1170-121

GREASE INTERCEPTOR WITH INTEGRAL EXTENSION

SPECIFICATION SHEET

TAG _____

Dimensional Data (inches and [mm]) are Subject to Manufacturing Tolerances and Change Without Notice



Size	Inlet/ Outlet Size**	Flow Rate G.P.M. [L]	Capacity		Approx. Wt. Lbs. [kg]	Dimensions in Inches			
			Water Gal. [L]	Grease Lbs. [kg]		C	D/E	F	G
800	3 [76]	50 [189]	40 [151]	100 [45]	220 [100]	32 [546]	16 [406]	36 [914]	24 1/2 [622]

ENGINEERING SPECIFICATION: ZURN Z1170-121 Acid Resistant Coated interior and exterior fabricated steel grease interceptor with integral extension, PDI, rated at ____ GPM and ____ Lbs. grease capacity, with internal air relief by-pass, bronze cleanout plug, removable pressure equalizing/flow diffusing inlet baffle, fixed bottom outlet baffle, and visible double wall trap seal. Gasketed non-skid secured cover complete with center tie down assembly, with Z1108 flow control fitting. Regularly furnished with a high inlet and outlet connection. Note: Location of outlet from bottom of interceptor cannot be changed.

PREFIXES

- ___ Z Acid Resistant Coated Fabricated Steel*
- ___ ZS All Type 304 Fabricated Stainless Steel

SUFFIXES

- ___ -AL Aluminum Cover
- ___ -L Angle type (Z1108-L) flow control device with plunger.
- ___ -T Cover recessed for tile/terrazzo. A 3 [76] minimum extension height is required. (Specify 'C' Dim. and required recess depth - 1/8 [3], 3/4 [19], or 1 1/4 [32]).

** Inlet and outlet sizes shown indicate standard operating sizes and flow control setting. Size #800 will have 4 [102] connections reduced to 3 [76] as standard. If changed, flow control must be adjusted accordingly.

REV.	DATE: 4/25/07	C.N. NO. 96508
DWG. NO. P-15410 PRODUCT NO. Z1170-121		

*REGULARLY FURNISHED UNLESS OTHERWISE SPECIFIED