



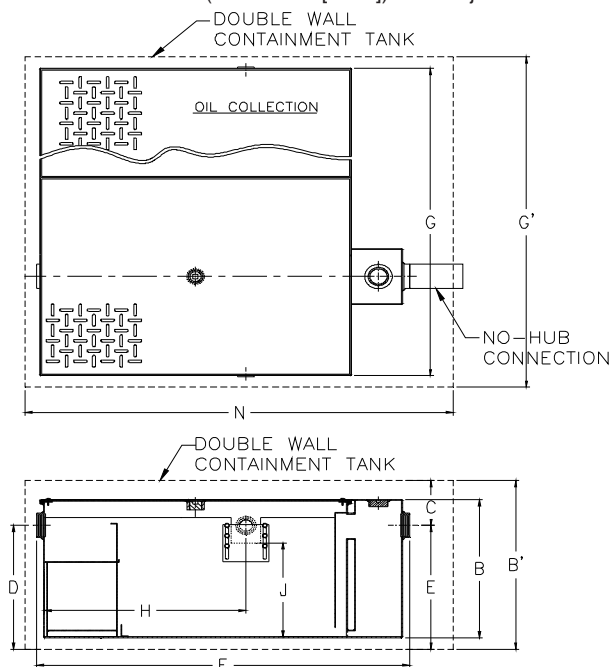
Z1188-ST-88

LARGE CAPACITY OIL INTERCEPTOR W/ INTEGRAL STORAGE TANK AND DOUBLE WALL CONTAINMENT TANK

SPECIFICATION SHEET

TAG _____

Dimensional Data (inches and [mm]) are Subject to Manufacturing Tolerances and Change Without Notice



Flow Rate GPM [LPM] Min.	Oil Storage Tank Cap. Gal. [L]	Approx. Wt. Lbs. [kg]	No. of Covers	
			Trap	Tank
75 [284]	125 [473]	1076 [489]	1	1
100 [379]	250 [946]	1400 [636]	1	1
125 [473]	250 [946]	2538 [1154]	2	2
150 [568]	250 [946]	2870 [1305]	2	2
200 [757]	400 [1514]	3413 [1551]	2	2
250 [946]	400 [1514]	4638 [2108]	2	2
300 [1136]	400 [1514]	5950 [2705]	2	2
350 [1325]	700 [2650]	7000 [3182]	2	2
400 [1514]	700 [2650]	8225 [3739]	2	2
450 [1703]	700 [2650]	9100 [4136]	2	2
500 [1893]	700 [2650]	9625 [4375]	2	2

Flow Rate GPM [LPM] Min.	Inlet/ Outlet Size	Water Capacity Gal. [L]	Dimensions in Inches [mm]									
			B	B'	C	D/E	F	G	G'	H	J	N
75 [284]	3 [76]	88 [333]	22-3/4 [578]	27-3/4 [705]	9-1/4 [235]	18-1/2 [470]	51-3/8 [1305]	65-3/8 [1661]	77-5/8 [1973]	29-1/4 [743]	15-1/2 [394]	65-1/8 [1654]
100 [379]	3 [76]	159 [602]	27 [686]	32 [813]	9 [229]	23 [584]	60-3/8 [1534]	82-3/8 [2092]	94-3/8 [2397]	35-1/4 [895]	19-3/4 [502]	74-1/8 [1883]
125 [473]	3 [76]	208 [787]	30-1/8 [765]	35-1/8 [892]	10-5/8 [270]	24-1/2 [622]	64-1/4 [1632]	84-5/8 [2150]	96-5/8 [2455]	36 [914]	21 [533]	78 [1981]
150 [568]	4 [102]	235 [890]	30-3/4 [781]	35-3/4 [908]	10-1/2 [267]	25-1/4 [641]	68-1/4 [1734]	82-3/4 [2102]	94-3/4 [2407]	38-11/16 [983]	21-5/8 [549]	82 [2083]
200 [757]	4 [102]	333 [1261]	35-1/2 [901]	40-1/2 [1028]	10-5/8 [270]	29-7/8 [759]	71-3/8 [1813]	92-3/4 [2356]	104-3/4 [2661]	43-1/2 [1105]	26-3/8 [670]	85-1/8 [2162]
250 [946]	5 [127]	445 [1685]	41 [1041]	46 [1168]	10 [254]	36 [914]	75-1/2 [1918]	95-5/8 [2429]	107-5/8 [2734]	40-3/4 [1035]	32-1/2 [825]	89-1/4 [2267]
300 [1136]	5 [127]	664 [2514]	46-1/4 [1175]	51-1/4 [1302]	11-5/8 [295]	39-5/8 [1006]	82-3/8 [2092]	92-3/8 [2346]	104-3/8 [2651]	48-1/16 [1221]	37-3/4 [959]	96-1/8 [2441]
350 [1325]	6 [152]	1006 [3808]	50-1/2 [1283]	55-1/2 [1410]	11-5/8 [295]	43-7/8 [1114]	103-1/8 [2619]	104-3/4 [2661]	116-3/4 [2966]	61-15/16 [1573]	40-3/8 [1026]	116-7/8 [2968]
400 [1514]	6 [152]	1266 [4792]	54-1/4 [1378]	59-1/4 [1505]	11-5/8 [295]	47-5/8 [1210]	110-1/8 [2797]	102-5/8 [2607]	114-5/8 [2912]	66-9/16 [1691]	44-1/8 [1121]	123-7/8 [3146]
450 [1703]	6 [152]	1575 [5962]	55/14 [1403]	60-1/4 [1530]	11-5/8 [295]	48-5/8 [1235]	123-1/8 [3127]	102-7/8 [2613]	114-7/8 [2918]	75-1/4 [1911]	44-5/8 [1131]	136-7/8 [3476]
500 [1893]	6 [152]	1695 [6416]	57-1/4 [1554]	62-1/4 [1581]	10-5/8 [270]	51-5/8 [1311]	124-1/8 [3153]	103-5/8 [2632]	115-5/8 [2937]	73-15/16 [1878]	48-1/8 [1222]	137-7/8 [3502]

ENGINEERING SPECIFICATION: ZURN Z1188-ST-88

Dura Coated interior and exterior fabricated steel oil interceptor, with bronze cleanout plug and visible double wall trap seal, removable combination pressure equalizing/flow diffusing baffle and sediment bucket, adjustable oil draw-off, vent connections, secured gasketed non-skid cover, left hand integral storage tank, and double wall containment. Regularly furnished with inlet and outlet in high position.

Note: location of outlet from bottom of interceptor cannot be changed.

OPTIONS (Check/specify appropriate options)

PREFIXES

- ___ Z Dura Coated Fabricated Steel*
- ___ ZS All Type 304 Fabricated Stainless Steel w/ Aluminum Cover
- ___ ZSS All Type 304 Fabricated Stainless Steel w/ Stainless Steel Cover

SUFFIXES

- ___ -AR Acid Resistant Epoxy Coated Finish.
- ___ -E Integral Dura Coated interior and exterior fabricated steel extension section. (Specify 'C' Dim. required) for recessed installation.
- ___ -HD Heavy-duty traffic cover rated at 10,000 lbs. [4536 Kg.] maximum safe live load.
- ___ -K Anchor flange 1-3/4 [44] down from top and 2 [51] wide. (Specify 'C' Dim. height required.)
- ___ -KC Anchor flange 1-3/4 [44] down from top and 2 [51] wide with clamp collar. A 3 [76] minimum extension height is required when anchor flange (-KC) option is specified. (Specify 'C' Dim. height required.)
- ___ -STR Storage tank on right hand side when facing the inlet.

REV. A	DATE: 6/26/12	C.N. NO. 124496
DWG. NO. 309783	PRODUCT NO. Z1188-ST-88	

*REGULARLY FURNISHED UNLESS OTHERWISE SPECIFIED