



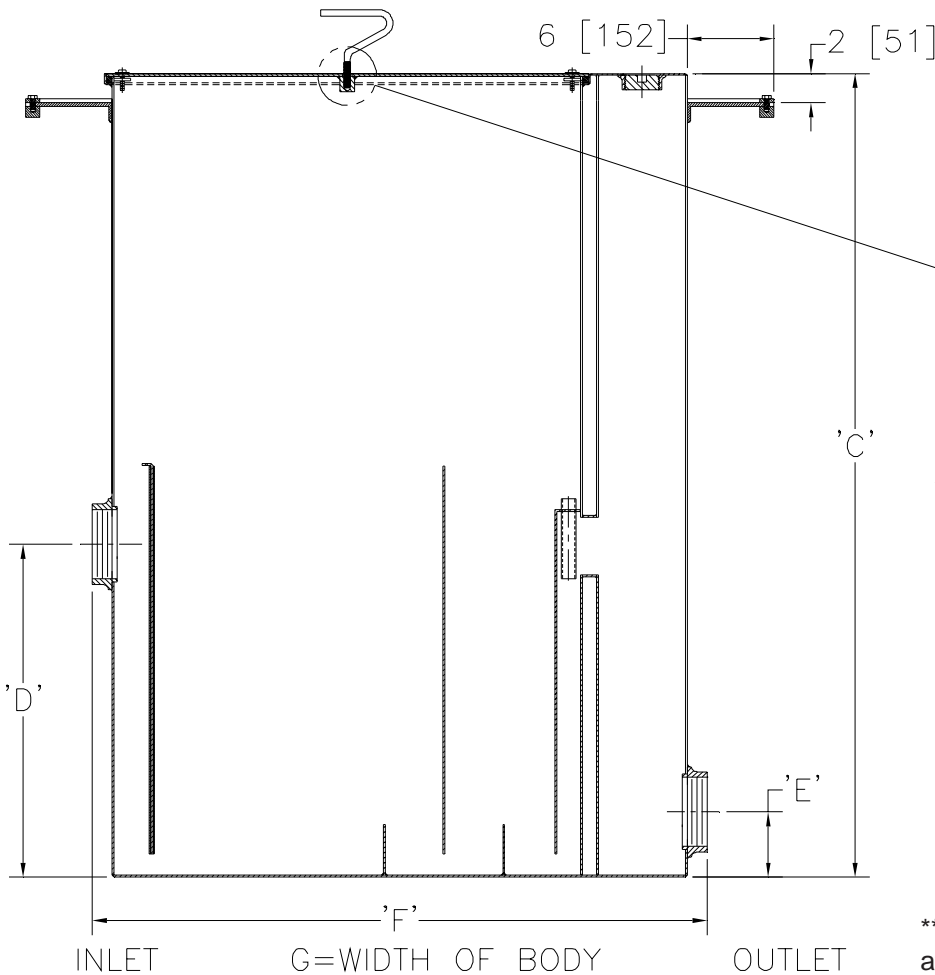
Z1172-148

LARGE CAPACITY GREASE INTERCEPTOR W/ EXTENSION, ANCHOR FLANGE & CLAMP COLLAR

SPECIFICATION SHEET

TAG _____

Dimensional Data (inches and [mm]) are Subject to Manufacturing Tolerances and Change Without Notice



HEX HEAD SET SCREW—
REMOVE SCREWS TO USE
LIFT HANDLES, REPLACE
SCREWS ONCE COVER IS
IN PLACE AND HANDLES
ARE REMOVED.

** Location of inlet must be maintained
at the 'D' dimension listed.

Size	Inlet/ Outlet Size	Flow Rate G.P.M. [L]	Capacity		No. of Covers	Approx. Wt. Lbs. [kg]	Dimensions in Inches				
			Water Gal. [L]	Grease Lbs. [kg]			C	D	E	F	G
1000	4 [102]	100 [378]	110 [416]	200 [91]	1	660 [299]	55 1/2 [1410]	23 [584]	4 1/2 [114]	42 3/4 [1086]	33 5/8 [854]

ENGINEERING SPECIFICATION: ZURN Z1172-148

Large capacity Acid Resistant Coated interior and exterior fabricated steel grease interceptor, rated at ___ GPM and ___ Lbs. grease capacity, with internal air relief by-pass, bronze cleanout plug and visible double wall trap seal with removable pressure equalizing/flow diffusing baffle, integral extension and anchor flange with clamping collar. Gasketed non-skid secured cover with removable lift handles, complete with flow control fitting.

OPTIONS (Check/specify appropriate options)

PREFIXES

- ___ Z Acid Resistant Coated Fabricated Steel*
- ___ ZS All type 304 Fabricated Stainless Steel.

SUFFIXES

- ___ -AL Aluminum Cover
- ___ -HD Heavy duty traffic cover rated at 10,000 lbs. [4536 Kg.] maximum safe live load.
- ___ -L Angle type (Z1108-L) flow control device.

REV.	DATE: 09/11/07	C.N. NO. 97317
DWG. NO. P-15476 PRODUCT NO. Z1172-148		

*REGULARLY FURNISHED UNLESS OTHERWISE SPECIFIED