

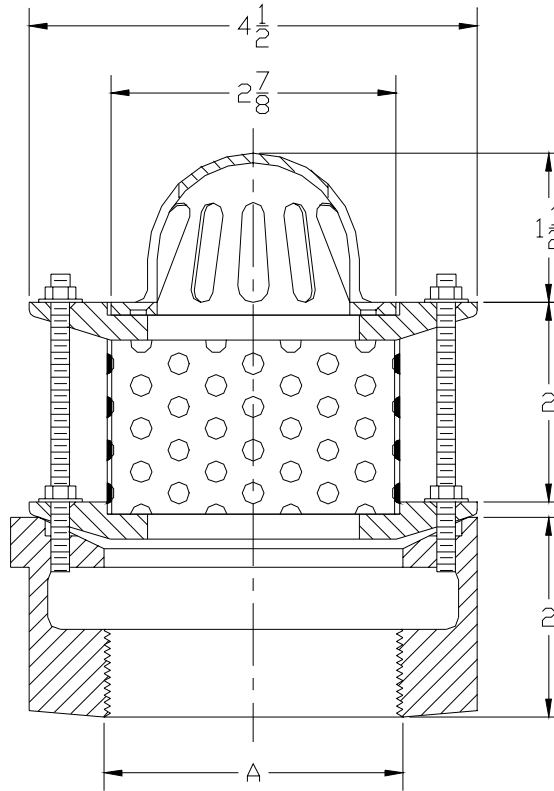


Z180-80
4 [102] DIAMETER CORNICE DRAIN
BOTTOM OUTLET W/ PERFORATED EXTENSION

SPECIFICATION SHEET

TAG _____

Dimensional Data (inches and [mm]) are Subject to Manufacturing Tolerances and Changes Without Notice



A- Pipe Size In.	Approx. Wt. Lbs. [kg]	Dome Open Area Sq. In. [cm ²]
2 [50] 3 [75]	5 [2]	4.5 [29]

ENGINEERING SPECIFICATION: ZURN ZRB180-80 4 1/2 [114] Diameter by 2 [51] High Cornice drain, Dura-Coated cast iron body, plain bronze dome and membrane flashing clamps with stainless steel perforated extension.

OPTIONS (Check/specify appropriate options)

PIPE SIZE

2 [50], 3 [75]
 2 [50], 3 [75]

(Specify size/type) **OUTLET**

___ IP Threaded
 ___ NH No-Hub (IP w/Z-1040)

'E' BODY HT. DIM.

2 [51]

PREFIXES

- ___ ZRB D.C.C.I. Body with Plain Bronze Dome*
- ___ ZB D.C.C.I. Body with Polished Bronze Dome
- ___ ZN D.C.C.I. Body with Polished Nickel Bronze Dome

SUFFIXES

- ___ -FS Flat Strainer
- ___ -G Galvanized Cast Iron
- ___ -HD 3 [76] High Dome
- ___ -VP Vandal Proof Secured Top
- ___ -4 4 [102] High Body
- ___ -8 8 [203] High Body

REV.	DATE: 11/22/02	C.N. NO. 90082
DWG. NO. P-14946 PRODUCT NO. Z180-80		

*REGULARLY FURNISHED UNLESS OTHERWISE SPECIFIED