



# Z1800-8B-KC

8 [203] DIAMETER ROUND INDUSTRIAL FLOOR DRAIN WITH ANCHOR FLANGE W/ SEEPAGE HOLES & CLAMP COLLAR

SPECIFICATION SHEET

TAG \_\_\_\_\_

Dimensional Data (inches and [ mm ]) are Subject to Manufacturing Tolerances and Change Without Notice

### Engineering Specification: ZURN Z1800-8B-KC

8" [203mm] Diameter x 6" [152mm] deep, 18 gage, all type 304 (CF8) stainless steel round industrial floor drain with loose set anti-tilt heavy-duty perimeter drainage cover, reinforced top frame, perforated removable sediment bucket with lift handle, pre-sloped bottom sump, and pre-pour stabilizing anchor tabs. Complete with anchor flange with seepage holes and clamp collar.

Approx. Wt. Lbs. [kg]	Grate Open Area Sq. In. [cm <sup>2</sup> ]
7 [3]	6.1 [39]

### Options (Check/specify appropriate options)

**Pipe Size (ØA)** (Specify size/type) **Outlet**  
 2, 3, 4 [51, 76, 102]    \_\_\_ BW Butt-Weld (Sch. 10)  
 2, 3, 4 [51, 76, 102]    \_\_\_ NH No-Hub

### Prefixes

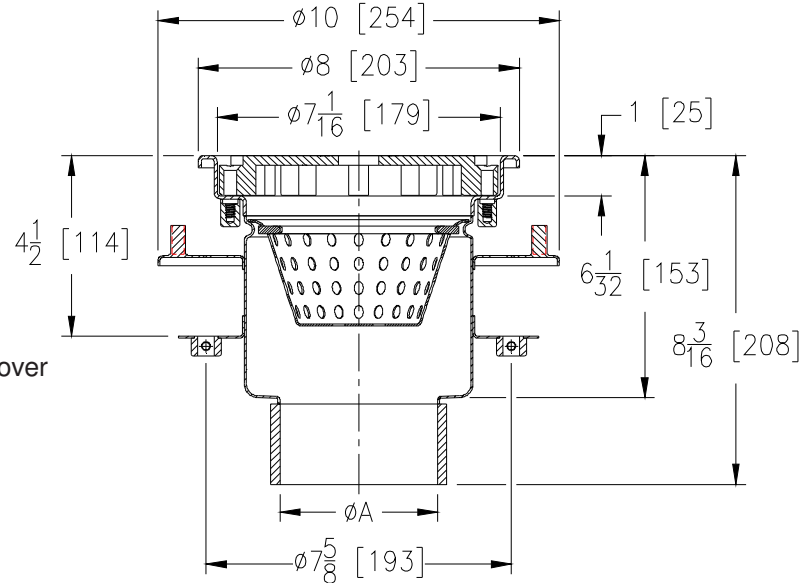
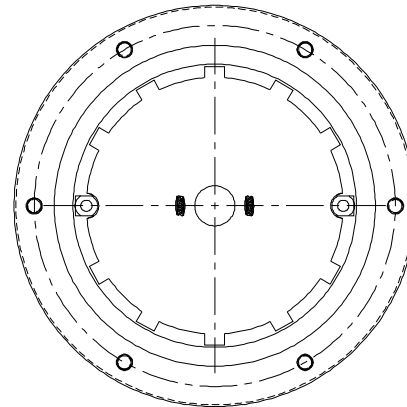
\_\_\_ Z    Type 304 (CF8) Stainless Steel\*  
 \_\_\_ ZM    Type 316 (CF8M) Stainless Steel

### Suffixes

\_\_\_ -B    Bell Trap/Solid Sediment Bucket  
 \_\_\_ -P    ø1/2 [13] Trap Primer Connection  
 \_\_\_ -SA    Stabilizer Assembly (Z1035)  
 \_\_\_ -SQ    Stabilizer Q-Deck (Z1035-Q)  
 \_\_\_ -TS    Top Secured Grate  
 \_\_\_ -VH    Vacuum Handle (-GCH Cover Only)  
 \_\_\_ -2PT    2 [51] Stainless Steel P-Trap  
 \_\_\_ -3PT    3 [76] Stainless Steel P-Trap  
 \_\_\_ -4PT    4 [102] Stainless Steel P-Trap

### Grate Options

\_\_\_ -GCH    Heavy-Duty Gas Tight Solid Cover  
 \_\_\_ -PCX    Extra-Heavy-Duty Perimeter Drainage Cover (6.1 Sq. In. [39 cm<sup>2</sup>] Open Area)  
 \_\_\_ -PGM    Medium-Duty Perforated Grate (9.9 Sq. In. [64 cm<sup>2</sup>] Open Area)  
 \_\_\_ -SGH    Heavy-Duty Slotted Grate (11.2 Sq. In. [72 cm<sup>2</sup>] Open Area)  
 \_\_\_ -SGM    Medium-Duty Slotted Grate (11.2 Sq. In. [72 cm<sup>2</sup>] Open Area)



\* Regularly furnished unless otherwise specified.