

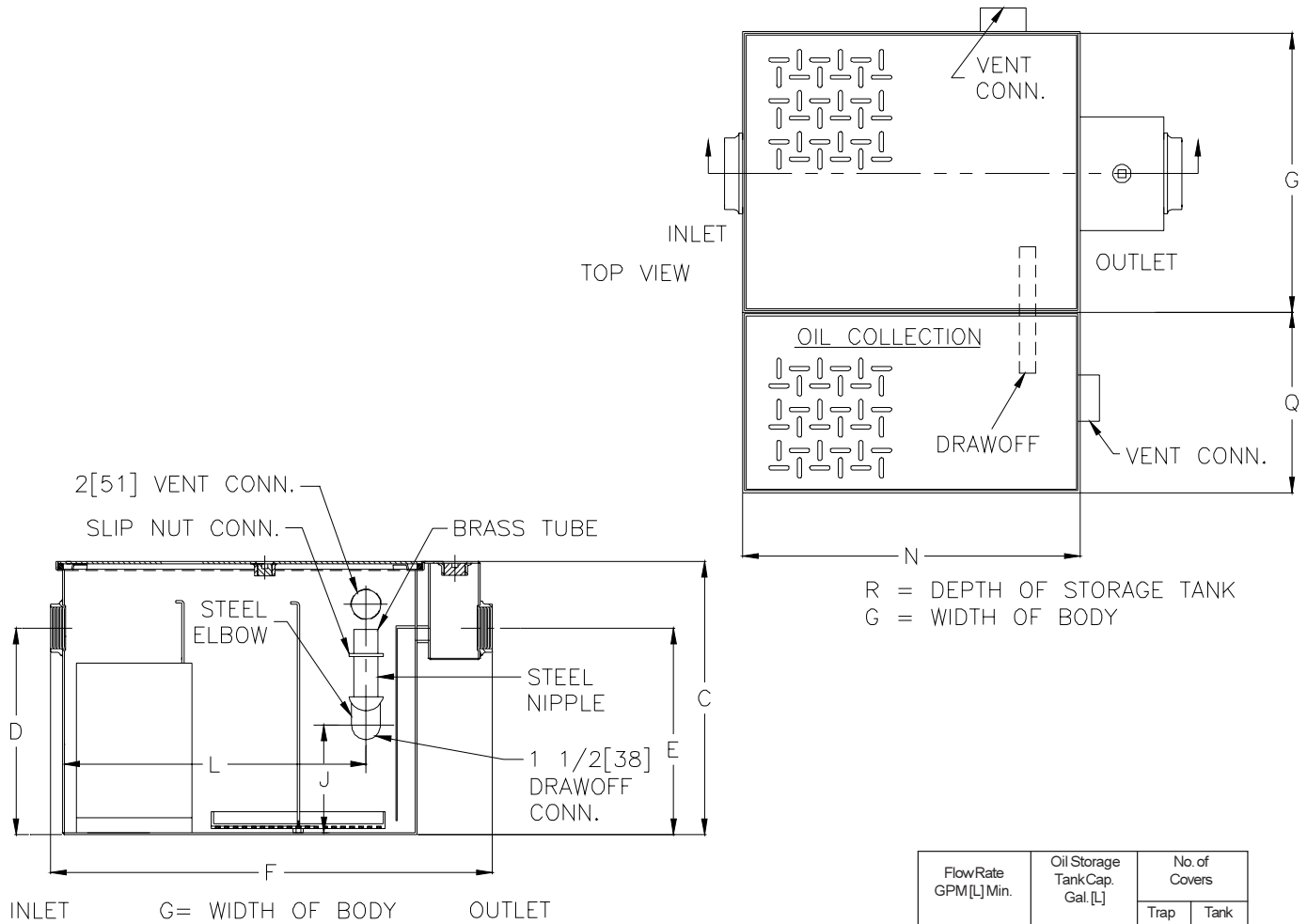


# Z1188-125 OIL INTERCEPTOR

SPECIFICATION SHEET

TAG \_\_\_\_\_

Dimensional Data (inches or [mm]) are Subject to Manufacturing Tolerances and Change Without Notice



FlowRate GPM[L] Min.	Oil Storage Tank Cap. Gal.[L]	No. of Covers	
		Trap	Tank
350[1325]	250[947]	2	1

FlowRate GPM [L] Min	Inlet/Outlet Size**	Water Capacity Gal. [L]	App. Wt. Lbs. [Kg]	Dimensions In Inches								
				C	D/E	F	G	J	L	N	Q	R
350[1325]	6[152]	860[3255]	2180[989]	50 1/2[1283]	43 7/8[1114]	87[2210]	63 5/8[1616]	20 1/4[514]	74 1/8[1883]	77[1778]	40[1016]	50 1/2[1283]

**ENGINEERING SPECIFICATION:** ZURN Z1188-125 Large capacity Acid Resistant Coated interior and exterior fabricated steel oil interceptor, with bronze cleanout plug and visible double wall trap seal, removable combination pressure equalizing/flow diffusing baffle and sediment bucket, horizontal baffle, adjustable oil drawoff and vent connections. Secured gasketed non-skid cover complete with flow control fitting and integral storage tank. Regularly furnished with inlet and outlet in high position.

**OPTIONS** (Check/specify appropriate options)

**PREFIXES**

\_\_\_\_\_ Z      Acid Resistant Coated Fabricated Steel\*

**SUFFIXES**

\_\_\_\_\_ -E      Acid Resistant Coated interior and exterior fabricated steel extension section. (Specify 'C' Dim. required) for recessed installation.

\_\_\_\_\_ -HD      Heavy duty traffic cover rated at 10,000 lbs [4536] kg. maximum safe live load.

\_\_\_\_\_ -K      Anchor flange 1 3/4 [44] down from top and 2 [51] wide. No extension required to accommodate -K.

\_\_\_\_\_ -KC      Anchor flange 1 3/4 [44] down from top and 2 [51] wide with clamp collar.

<b>REV.</b>	<b>DATE: 4/29/04</b>	<b>C.N. NO. 92144</b>
<b>DWG. NO. P-15055</b>	<b>PRODUCT NO. Z1188-125</b>	

\*REGULARLY FURNISHED UNLESS OTHERWISE SPECIFIED