



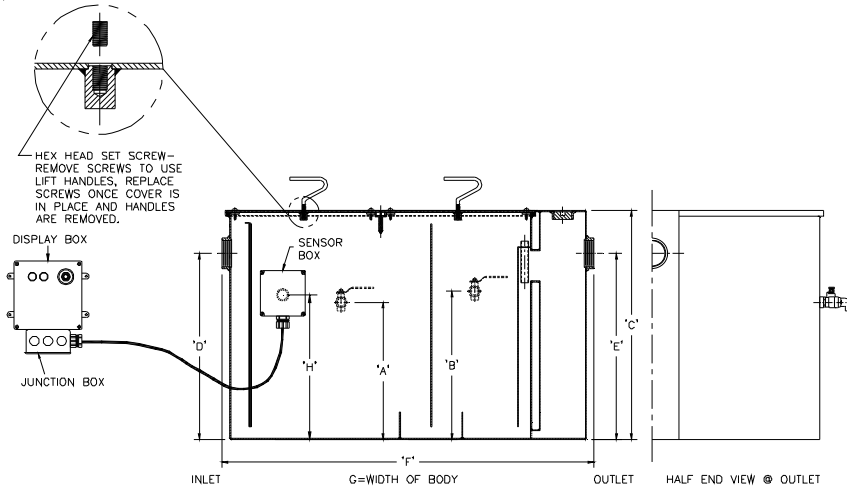
Z1172-165

SPECIFICATION SHEET

LARGE CAPACITY GREASE INTERCEPTOR W/ DRAW-OFF VALVES W/ USER NOTIFICATION SYSTEM

TAG _____

Dimensional Data (inches and [mm]) are Subject to Manufacturing Tolerances and Change Without Notice



Flow Rate G.P.M. [L]	Capacity		No. of Covers	Approx Wt. Lbs. [KG]	Dimension In Inches [MM]						
	Water Gal. [L]	Grease Lbs. [kg]			A	B	C	D/E	F	G	H
100 [379]	110 [379]	200 [91]	1	408 [185]	15-11/16[399]	17-1/2 [445]	27 [686]	23-[584]	42-3/4 [1086]	33 5/8 [854]	16-1/8 [410]
125 [472]	150 [567]	250 [114]	2	749[340]	16 [406]	17-5/16 [440]	30-1/8[765]	24-1/2[622]	49-1/4[1251]	40[1016]	16-5/16[414]
150 [567]	195 [737]	856 [389]	2	856 [389]	18-1/16 [459]	19-1/2 [496]	30-3/4 [781]	25-1/4 [641]	56 [1422]	41-5/8 [1057]	18-1/16 [459]
200 [756]	270 [1021]	1016 [461]	2	1016 [461]	21-7/8 [556]	24 [610]	35-1/2 [902]	29-7/8 [759]	61 [1549]	43-5/8 [1108]	21-7/8 [556]
300 [1134]	665 [2514]	600 [272]	2	1770 [804]	31-1/2 [800]	33-5/8 [854]	46-1/4 [1175]	39-5/8 [1006]	80 [2032]	58-3/8 [1489]	32-1/2 [826]
500 [1890]	1440 [5443]	1000 [454]	3	2857 [1297]	42-1/2 [1080]	44-3/4 [1137]	57-1/4 [1454]	51-5/8 [1311]	104 [2642]	74 [1880]	43-5/8 [1108]

ENGINEERING SPECIFICATION: ZURN Z1172-165

Large capacity Acid Resistant Coated interior and exterior fabricated steel grease interceptor, rated at ____ GPM and ____ Lbs. grease capacity, with internal air relief by-pass, bronze cleanout plug, visible double wall trap seal, removable pressure equalizing/flow diffusing baffle, and dual side 3/4 NPS grease draw-off valves located in both grease separation chambers. Gasketed non-skid secured cover with removable lift handles. Complete with flow control fitting. Includes encased fiberglass sensor box containing an electronic grease level sensor (specify right or left side)*, a fiberglass display box with one green power light, red grease level light, audio alarm and junction box. Regularly furnished with inlet and outlet in high position, and draw off valves located on right hand side as viewed from outlet end.

OPTIONS (Check/specify appropriate options)

PREFIXES

- ____ Z Acid Resistant Coated Fabricated Steel*
- ____ ZS All Type 304 Fabricated Stainless Steel

SUFFIXES

- ____ -AL Aluminum Cover
- ____ -L Angle type (Z1108-L) flow control device.
- ____ -PW Plus wrench

Note:

- * 1. Sensor box is mounted on the left or right hand side of the unit when facing inlet (must be specified).
2. Power supply 120V GFCI.
3. Recommended Installations: Sitting on the floor or recessed in a pit only. (A pit installation requires that a drain or sump pump be installed to keep the pit relatively dry).
4. Location of inlet from bottom of interceptor cannot be changed.

REV.	DATE: 10/08/12	C.N. NO. 124799
DWG. NO. 310580	PRODUCT NO. Z1172-165	

*REGULARLY FURNISHED UNLESS OTHERWISE SPECIFIED

ZURN INDUSTRIES, LLC. ♦ SPECIFICATION DRAINAGE OPERATION ♦ 1801 Pittsburgh Ave. ♦ Erie, PA 16514

Phone: 814/455-0921 ♦ Fax: 814/454-7929 ♦ World Wide Web: www.zurn.com

In Canada: ZURN INDUSTRIES LIMITED ♦ 3544 Nashua Drive ♦ Mississauga, Ontario L4V1L2 ♦ Phone: 905/405-8272 Fax: 905/405-1292