



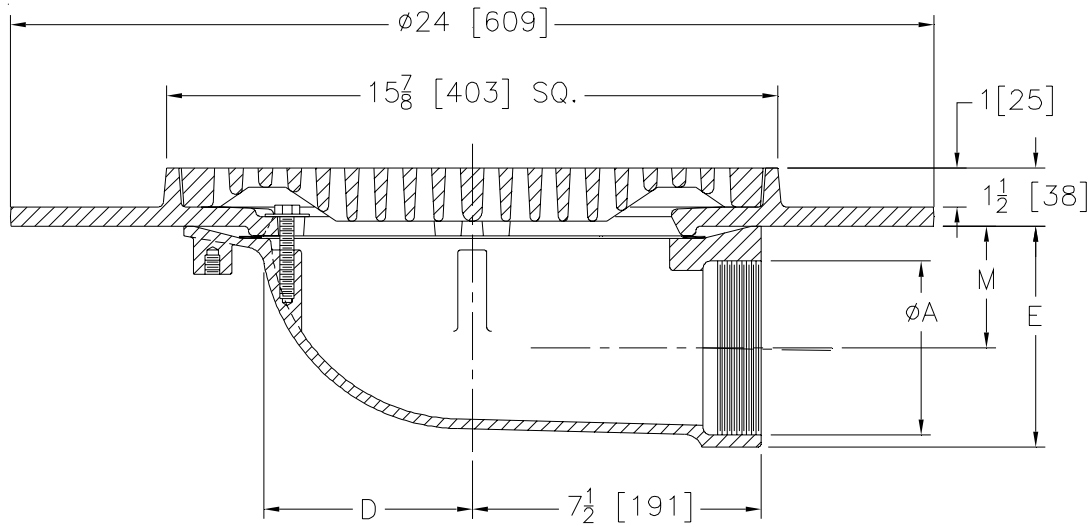
# Z537-78

SPECIFICATION SHEET

## 16 [406] SQUARE TOP HEAVY-DUTY PARKING DECK DRAIN W/ SUPPORT FLANGE & SIDE OUTLET

TAG \_\_\_\_\_

Dimensional Data (inches and [ mm ]) are Subject to Manufacturing Tolerances and Change Without Notice



Dimensions In Inches			Approx. Wt. Lbs. [kg]	Grate Open Area Sq. In [sq. cm]
A Pipe Size	D	M		
2 [51]	5 1/2 [140]	4 1/4 [108]	126 [57]	79 [510]
3 [76]		3 11/16 [94]	124 [56]	
4 [102]		3 3/16 [81]	125 [57]	
5 [127]	5 7/8 [149]	4 13/16 [122]	130 [59]	
6 [152]		4 1/4 [108]	132 [60]	

**ENGINEERING SPECIFICATION: ZURN Z537-78**

16 [406] Square Top Parking Deck Drain, Dura-Coated cast iron body with side outlet and heavy-duty gasketed drain support flange, with heavy-duty slotted grate.

**OPTIONS** (Check/specify appropriate options)

<b>PIPE SIZE</b>	(Specify size/type)	<b>OUTLET</b>	<b>'E' BODY HT. DIM.</b>
2 thru 4 [51 thru 102]	_____	IP Threaded	5 3/4 [146]
5, 6 [125, 152]	_____	IP Threaded	7 7/8 [200]

**PREFIXES**

- \_\_\_\_\_ Z D.C.C.I. Body and Top\*
- \_\_\_\_\_ ZB D.C.C.I. Body with Polished Bronze Top (Add 3/16 [5] to 1 1/2 [38] Dim.)
- \_\_\_\_\_ ZN D.C.C.I. Body with Polished Nickel Bronze Top (Add 3/16 [5] to 1 1/2 [38] Dim.)

**SUFFIXES**

- \_\_\_\_\_ -DG Duresist Grate
- \_\_\_\_\_ -G Galvanized Cast Iron
- \_\_\_\_\_ -VP Vandal-Proof Secured Top

\*REGULARLY FURNISHED UNLESS OTHERWISE SPECIFIED

REV.	DATE: 08/08/07	C.N. NO. 97113
DWG. NO. P-15458	PRODUCT NO. Z537-78	