

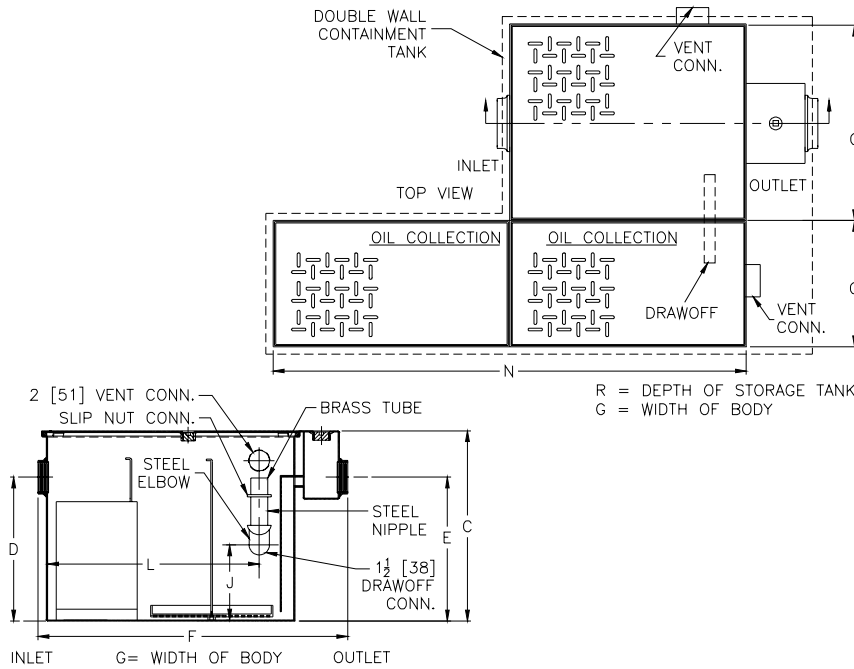


Z1188-135 OIL INTERCEPTOR

SPECIFICATION SHEET

TAG _____

Dimensional Data (inches or [mm]) are Subject to Manufacturing Tolerances and Change Without Notice



Flow Rate GPM[L]Min.	Oil Storage Tank Cap. Gal. [L]	No. of Covers	
		Trap	Tank
75 [284]	100 [379]	1	1
100 [379]	200 [757]	1	1
125 [473]	200 [757]	1	1
150 [568]	200 [757]	2	2
200 [757]	300 [1136]	2	2
250 [946]	300 [1136]	2	2
300 [1136]	300 [1136]	2	2
350 [1325]	500 [1893]	2	2
400 [1514]	500 [1893]	2	2
450 [1703]	500 [1893]	2	2
500 [1893]	500 [1893]	2	2

Flow Rate GPM [L] Min	Inlet/ Outlet Size**	Water Capacity Gal. [L]	App. Wt. Lbs. [Kg]	Dimensions In Inches								
				C	D/E	F	G	J	L	N	Q	R
75 [284]	3 [76]	65 [246]	332 [151]	22 3/4 [578]	18 1/2 [470]	36 [914]	28 5/8 [727]	8 [203]	25 3/4 [654]	26 [660]	46 [1168]	28 5/8 [727]
100 [378]	3 [76]	110 [416]	432 [196]	27 [686]	23 [584]	42 3/4 [1086]	33 5/8 [854]	10 [254]	30 1/8 [765]	67 [1702]	46 [1168]	32 [813]
125 [472]	3 [76]	150 [567]	780 [354]	30 1/8 [765]	24 1/2 [622]	49 1/4 [1251]	40 [1016]	14 1/4 [362]	36 5/8 [930]	67 [1702]	46 [1168]	32 [813]
150 [567]	4 [102]	190 [719]	888 [403]	30 3/4 [781]	25 1/4 [641]	56 [1422]	41 3/8 [1051]	14 [356]	43 7/8 [1114]	67 [1702]	46 [1168]	32 [813]
200 [756]	4 [102]	265 [1003]	1055 [479]	35 1/2 [902]	29 7/8 [759]	61 [1549]	43 5/8 [1108]	18 [457]	46 5/8 [1184]	79 [2007]	46 [1168]	41 [1041]
250 [945]	5 [127]	460 [1741]	1438 [652]	41 [1041]	36 [914]	71 [1803]	51 3/8 [1305]	20 [508]	56 5/8 [1438]	79 [2007]	46 [1168]	41 [1041]
300 [1134]	5 [127]	660 [2498]	1840 [835]	46 1/4 [1175]	39 5/8 [1006]	80 [2032]	58 3/8 [1483]	20 5/8 [524]	65 5/8 [1667]	79 [2007]	46 [1168]	41 [1041]
350 [1323]	6 [152]	860 [3255]	2180 [989]	50 1/2 [1283]	43 7/8 [1114]	87 [2210]	63 5/8 [1616]	20 1/4 [514]	74 1/8 [1883]	79 [2007]	46 [1168]	65 1/4 [1657]
400 [1512]	6 [152]	1090 [4126]	2536 [1150]	54 1/4 [1378]	47 5/8 [1210]	94 [2388]	67 [1702]	20 1/2 [521]	79 1/8 [2010]	79 [2007]	46 [1168]	65 1/4 [1657]
450 [1701]	6 [152]	1275 [4826]	2816 [1277]	55 1/4 [1403]	48 5/8 [1235]	100 [2540]	72 [1829]	22 1/4 [565]	85 3/8 [2169]	79 [2007]	46 [1168]	65 1/4 [1657]
500 [1890]	6 [152]	1435 [5423]	2970 [1347]	57 1/4 [1454]	51 5/8 [1311]	104 [2642]	74 [1880]	23 1/4 [591]	88 3/8 [2245]	79 [2007]	46 [1168]	65 1/4 [1657]

ENGINEERING SPECIFICATION: ZURN Z1188-135 Large capacity Acid Resistant Coated interior and exterior fabricated steel oil interceptor, with internal air relief by-pass, bronze cleanout plug and visible double wall trap seal, removable combination pressure equalizing/flow diffusing baffle and sediment bucket, horizontal baffle, adjustable oil drawoff and vent connections. Secured gasketed non-skid cover complete with flow control fitting, integral storage tank, and double wall containment tank. Regularly furnished with inlet and outlet in high position.

OPTIONS (Check/specify appropriate options)

PREFIXES

___Z Acid Resistant Coated Fabricated Steel*

SUFFIXES

- ___E Acid Resistant Coated interior and exterior fabricated steel extension section. (Specify 'C' Dim. required) for recessed installation.
- ___HD Heavy duty traffic cover rated at 10,000 lbs [4536] kg. maximum safe live load.
- ___K Anchor flange 1 3/4 [44] down from top and 2 [51] wide. No extension required to accommodate -K.
- ___KC Anchor flange 1 3/4 [44] down from top and 2 [51] wide with clamp collar.

Note:

1. Double wall construction will extend the overall length and width of the unit by 3 [76] per side and increase the overall depth by 3 [76].

*REGULARLY FURNISHED UNLESS OTHERWISE SPECIFIED

REV.	DATE: 8/4/05	C.N. NO. 93668
DWG. NO. P-15183	PRODUCT NO. Z1188-135	

ZURN INDUSTRIES, INC. ♦ SPECIFICATION DRAINAGE OPERATION ♦ 1801 Pittsburgh Ave. ♦ Erie, PA 16514

Phone: 814/455-0921 ♦ Fax: 814/454-7929 ♦ World Wide Web: www.zurn.com

In Canada: ZURN INDUSTRIES LIMITED ♦ 3544 Nashua Drive ♦ Mississauga, Ontario L4V1L2 ♦ Phone: 905/405-8272 Fax: 905/405-1292