



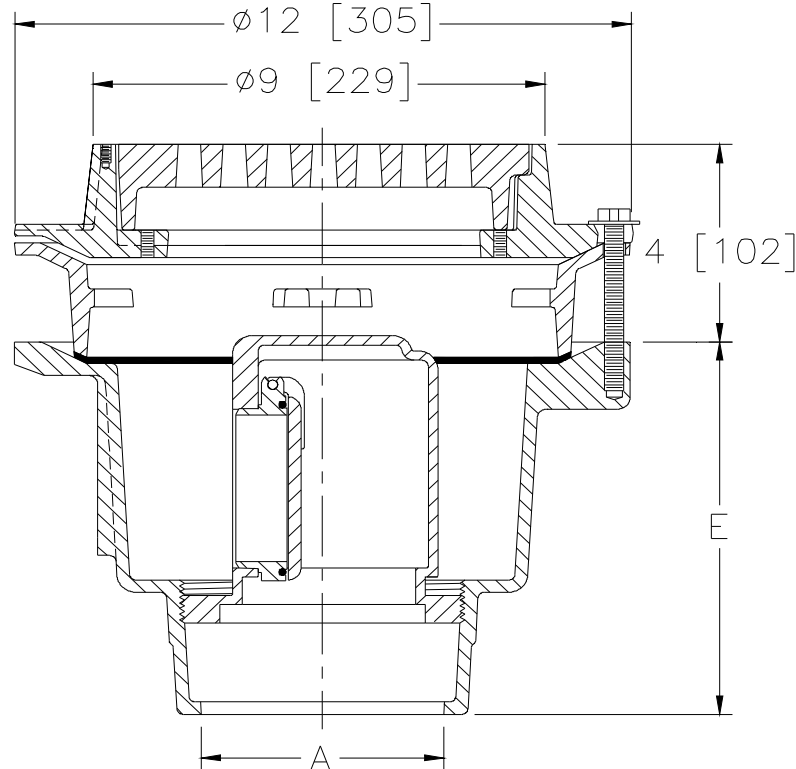
Z511-F-V

9 [229] HEAVY DUTY DRAIN W/ EXTENSION FRAME & BACKWATER VALVE

SPECIFICATION SHEET

TAG _____

Dimensional Data (inches and [mm]) are Subject to Manufacturing Tolerances and Change Without Notice



| A Pipe Size In [mm] | Approx. Wt. Lbs. [kg] | Grate Open Area Sq. In. [cm ²] |
|---------------------------|-----------------------------|--|
| 2,3,4 [51,76,102] | 49 [22] | 18 [116] |

ENGINEERING SPECIFICATION: ZURN Z511-F-V

9" [229mm] Diameter top drain, Dura-Coated cast iron deep sump body with bottom outlet, extension frame, seepage pan and combination membrane flashing clamp and frame for heavy duty cast iron deep flange grate with backwater valve.

OPTIONS (Check/specify appropriate options)

PIPE SIZE

3,4 [76,102]
3 [76]
3,4 [76,102]

(Specify size/type) OUTLET

___ IC Inside Caulk
___ IG Inside Caulk w/Sealtrol Gskt.
___ IP Threaded

'E' BODY HT. DIM.

7-5/8 [194]
7-5/8 [194]
7-5/8 [194]

PREFIXES

___ Z D.C.C.I. Body and Top*
___ ZB D.C.C.I. Body w/Polished Bronze Top
___ ZN D.C.C.I. Body w/Polished Nickel Bronze Top

SUFFIXES

| | |
|--|--|
| ___ -AR Acid Resisting Epoxy Coated Cast Iron | ___ -SG Solid Gasketed Cover |
| ___ -DG Duresist Grate | ___ -TS Top Secure with Slotted Screws |
| ___ -G Galvanized Cast Iron | ___ -VP Vandal Proof Secured Top |
| ___ -HP Heel-Proof Grate | |
| ___ -J Auxiliary Inlet Connection (Specify 1-1/2 [38] or 2 [51], Number & Location) | |
| ___ -P TrapPrimer Connection | |
| ___ -SC Solid Cover | |

* Regularly furnished unless otherwise specified.

Zurn Industries, LLC | Specification Drainage Operation
1801 Pittsburgh Avenue, Erie, PA U.S.A. 16502 · Ph. 855-663-9876, Fax 814-454-7929
In Canada | Zurn Industries Limited
3544 Nashua Drive, Mississauga, Ontario L4V 1L2 · Ph. 905-405-8272, Fax 905-405-1292
www.zurn.com

Rev. B
Date: 10/06/2017
C.N. No. 138486
Prod. | Dwg. No. Z511-F-V