



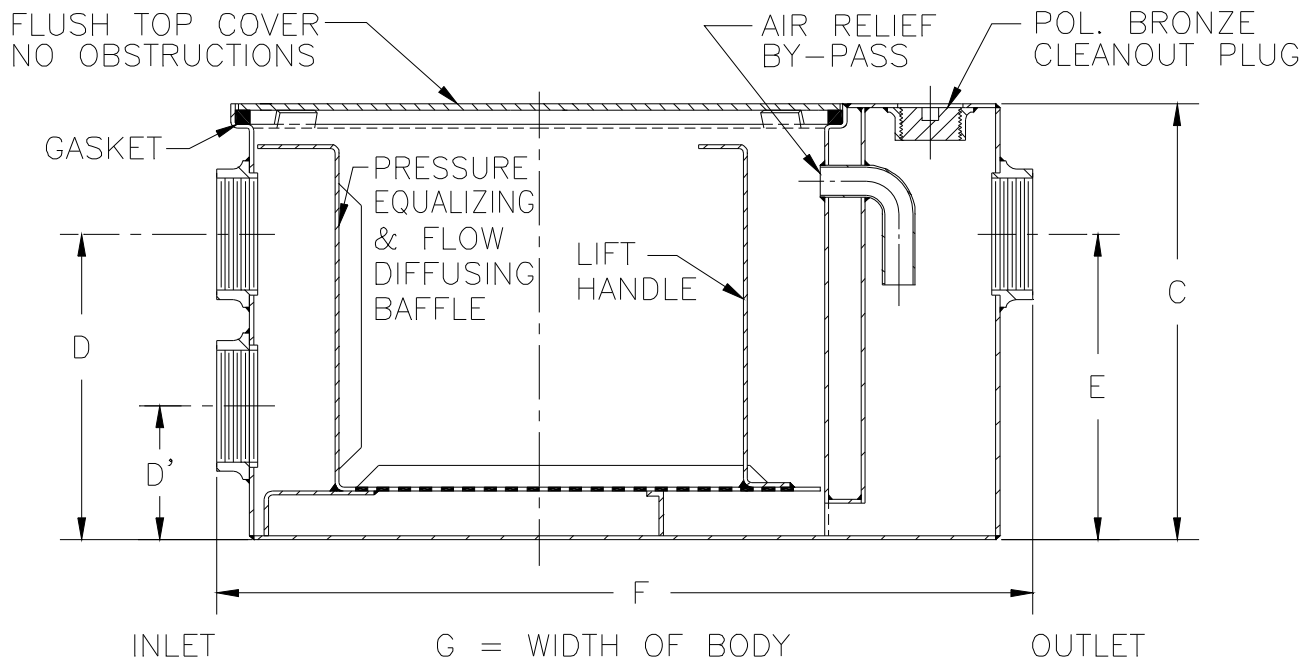
# Z1170-140

## GREASE INTERCEPTOR W/ CUSTOM DUAL HIGH/LOW INLET

SPECIFICATION SHEET

TAG \_\_\_\_\_

Dimensional Data (inches and [ mm ]) are Subject to Manufacturing Tolerances and Change Without Notice



Size	Inlet/ Outlet Size**	Flow Rate G.P.M. [L]	Capacity		Approx. Wt. Lbs. [kg]	Dimensions in Inches				
			Water Gal. [L]	Grease Lbs. [kg]		C	D/E	D'	F	G
600	4 [152]	25 [94]	21[79]	50 [23]	124 [56]	33 3/4 [857]	16 [406]	4 3/4 [121]	32 1/4 [819]	19 7/8 [505]

**ENGINEERING SPECIFICATION: ZURN Z1170-140**

Acid Resistant Coated interior and exterior fabricated steel grease interceptor, PDI, rated at 25 GPM and 50 Lbs. grease capacity, with internal air relief by-pass, bronze cleanout plug and visible double wall trap seal with removable combination pressure equalizing/flow diffusing baffle and sediment tray. Gasketed non-skid secured cover complete with Z-1108 flow control fitting. Regularly furnished with a dual high/low inlet and outlet connection. Note: Location of outlet from bottom of interceptor cannot be changed.

**PREFIXES**

\_\_\_ Z Acid Resistant Coated Fabricated Steel\*

**SUFFIXES**

- \_\_\_ -HD Heavy-Duty Cover rated at 10,000 lbs. [4536 kg.] maximum safe live load. A 3 [76] minimum extension height is required when Heavy-Duty Cover (-HD) option is specified.
- \_\_\_ -K Anchor flange 1 3/4 [44] down from top and 2 [51] wide. A 3 [76] minimum extension height is required when anchor flange (-K) option is specified. (Specify 'C' Dim. height required.)
- \_\_\_ -KC Anchor flange 1 3/4 [44] down from top and 2 [51] wide with clamp collar. A 3 [76] minimum extension height is required when anchor flange (-K) option is specified.
- \_\_\_ -L Angle type (Z-1108-L) flow control device.
- \_\_\_ -R Recessing receiver for recessed installation is equipped with adjustable support brackets and gasketed non-skid cover with covered recessed lift handle.
- \_\_\_ -RE Recessing receiver enclosed type for recessed installation. Furnished with adjustable support brackets and gasketed non-skid secured cover with covered recessed lift handle.
- \_\_\_ -T Cover recessed for tile/terrazzo. A 3 [76] minimum extension height is required. (Specify 'C' Dim. and required recess depth - 1/8 [3], 3/4 [19], or 1 1/4 [32]).

\*\* Inlet and outlet sizes shown indicate standard operating sizes and flow control setting. Size #600 will have 4 [102] connections reduced to 3 [76] as standard. If changed, flow control must be adjusted accordingly.

REV.	DATE: 01/10/12	C.N. NO. 122627
DWG. NO. 308638	PRODUCT NO. Z1170-140	

\*REGULARLY FURNISHED UNLESS OTHERWISE SPECIFIED