



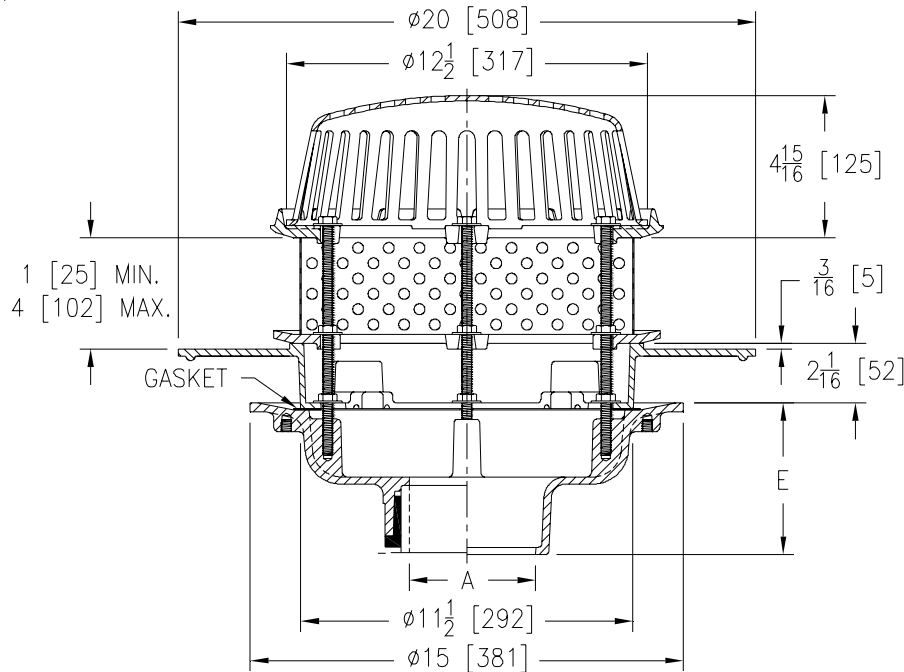
Z100-196

SPECIFICATION SHEET

15 [381] DIAMETER WIDE FLANGE ROOF DRAIN W/ TROWELING FLANGE & PERFORATED EXTENSION

TAG _____

Dimensional Data (inches and [mm]) are Subject to Manufacturing Tolerances and Change Without Notice



A Pipe Size In.	Approx. Wt. Lbs. [kg]	Dome Open Area Sq. In. [cm ²]
2,3,4 [51,76,102]	58 [26]	103 [665]
5,6 [127,152]	55 [25]	
8 [203]	58 [26]	

ENGINEERING SPECIFICATION: ZURN Z100-196

15 [381] Diameter roof drain. Dura-Coated cast iron body, troweling flange, secondary clamp collar, stainless steel perforated extension, combination membrane flashing clamp/gravel guard and low silhouette Poly-Dome.

OPTIONS (Check/specify appropriate options)

PIPE SIZE

2 thru 6,8 [51 thru 152,203]
2 thru 6,8 [51 thru 152,203]
2 thru 6,8 [51 thru 152,203]
2,3,4 [51,76,102]
6 [152]

(Specify size/type) OUTLET

____ IC Inside Caulk
____ IP Threaded
____ NH No-Hub
____ NL Neo-Loc
____ NL Neo-Loc

E BODY HT. DIM.

5 1/4 [133]
3 3/4 [95]
5 1/4 [133]
4 9/16 [116]
5 7/16 [112]

PREFIXES

____ Z D.C.C.I. Body with Poly-Dome*
____ ZA D.C.C.I. Body with Aluminum Dome
____ ZC D.C.C.I. Body with Cast Iron Dome
____ ZRB D.C.C.I. Body with Plain Bronze Dome

SUFFIXES

____ -AC Angular Underdeck Clamp	____ -R Roof Sump Receiver
____ -AR Acid Resistant Epoxy Coated	____ -SS Stainless Steel Mesh Screen Over Dome
____ -AW 3/4 [19] to 4 [102] Adj. Water Level Regulator (Specify Height) (ZC Only)	____ -ST Dome with Solid Top (ZA, ZC & ZRB Only)
____ -BS Bronze Mesh Screen Over Dome	____ -TC Neo-Loc Test Cap Gasket (2 - 4 [51 - 102] NL Bottom Outlet Only)
____ -C Underdeck Clamp	____ -VP Vandal-Proof Secured Top
____ -DE Deck Extension	____ -84 Stainless Steel Perforated Gravel Guard
____ -DP Top-Set® Deck Plate (Replaces both the -C and -R)	____ -89 2 [51] High External Water Dam
____ -DR Top-Set® Drain Riser	____ -90 90° Threaded Side Outlet Body (2 thru 6 [51 or 152])
____ -EB Top-Set® Adjustable Extension Assembly	
____ -FG Flush Grate (Replaces Dome Strainer)	
____ -G Galvanized Cast Iron	
____ -GD Galvanized Cast Iron Dome (ZC Only)	
____ -HD 6 3/4 [171] High Aluminum Dome Strainer (148 Sq. In. [955 cm ²] Open Area) (ZA Only)	

*REGULARLY FURNISHED UNLESS OTHERWISE SPECIFIED

REV. DATE: 12/5/08 C.N. NO. 99454

DWG. NO. P-15632 PRODUCT NO. Z100-196

ZURN INDUSTRIES, LLC ♦ SPECIFICATION DRAINAGE OPERATION ♦ 1801 Pittsburgh Ave. ♦ Erie, PA 16514

Phone: 814/455-0921 ♦ Fax: 814/454-7929 ♦ World Wide Web: www.zurn.com

In Canada: ZURN INDUSTRIES LIMITED ♦ 3544 Nashua Drive ♦ Mississauga, Ontario L4V1L2 ♦ Phone: 905/405-8272 Fax: 905/405-1292