



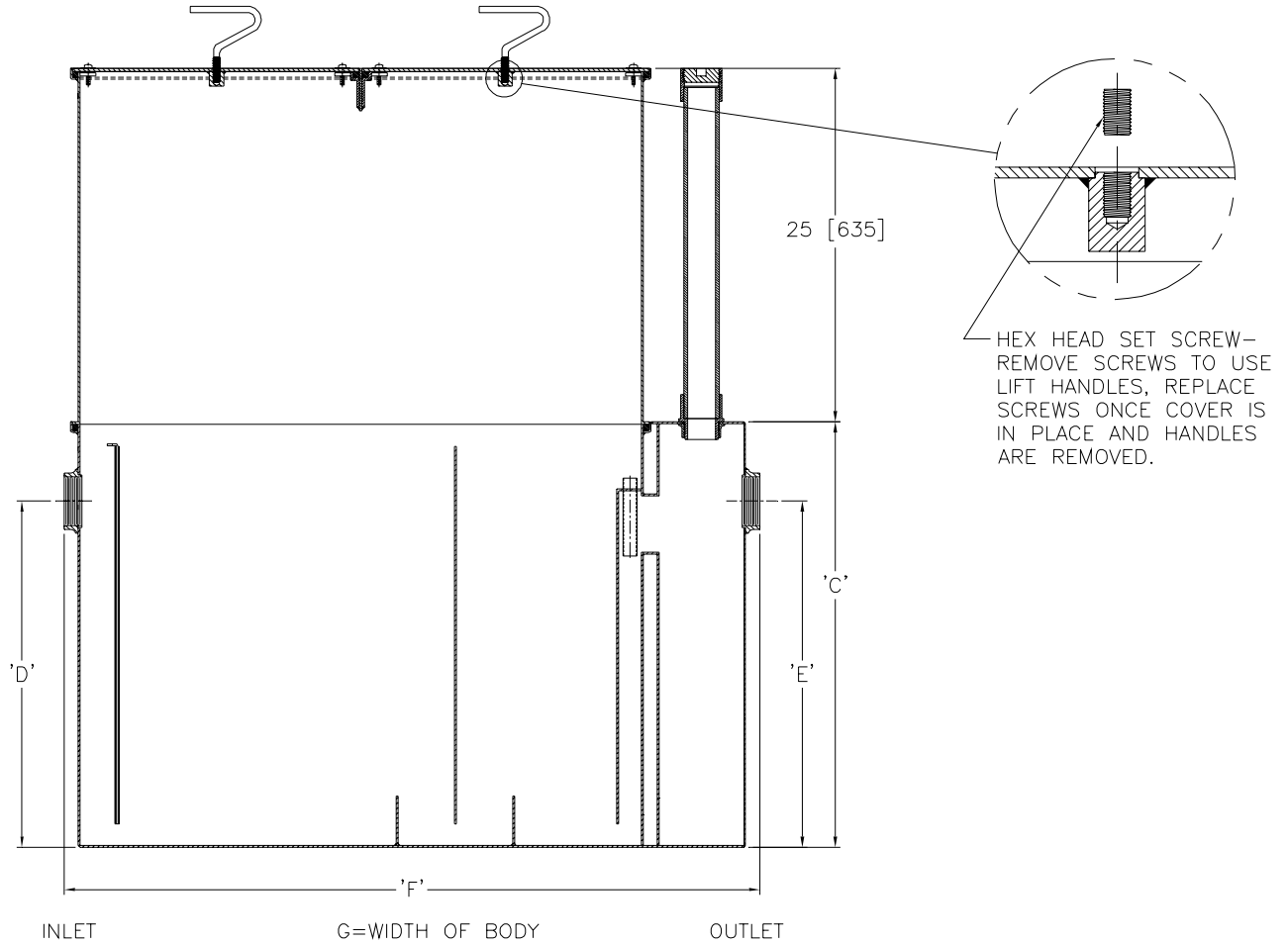
# Z1172-144

## LARGE CAPACITY GREASE INTERCEPTOR W/RETRO-FIT EXTENSION

SPECIFICATION SHEET

TAG \_\_\_\_\_

Dimensional Data (inches and [ mm ]) are Subject to Manufacturing Tolerances and Change Without Notice



Size	Inlet/ Outlet Size	Flow Rate G.P.M. [L]	Capacity		No. of Covers	Approx. Wt. Lbs. [kg]	Dimensions in Inches			
			Water Gal. [L]	Grease Lbs. [kg]			C	D/E	F	G
1200	4 [102]	150 [567]	195 [737]	300 [136]	2	856 [389]	30 3/4 [781]	25 1/4 [641]	56 [1422]	41 5/8 [1057]

**ENGINEERING SPECIFICATION:** ZURN Z1172-144 Large capacity Acid Resistant Coated interior and exterior fabricated steel grease interceptor and extension, rated at \_\_\_\_ GPM and \_\_\_\_ Lbs. grease capacity, with internal air relief by-pass, bronze cleanout plug and visible double wall trap seal with removable pressure equalizing/flow diffusing baffle. Gasketed non-skid secured cover with removable lift handles, complete with flow control fitting. Regularly furnished with inlet and outlet in high position.

**OPTIONS** (Check/specify appropriate options)

**PREFIXES**

- \_\_\_ Z Acid Resistant Coated Fabricated Steel\*
- \_\_\_ ZS All Type 304 Fabricated Stainless Steel

**SUFFIXES**

- \_\_\_ -AL Aluminum Cover
- \_\_\_ -K Anchor flange 1 3/4 [44] down from top and 2 [51] wide.
- \_\_\_ -KC Anchor flange 1 3/4 [44] down from top and 2 [51] wide with clamp collar.
- \_\_\_ -L Angle type (Z1108-L) flow control device.

<b>REV. A</b>	<b>DATE: 10/24/07</b>	<b>C.N. NO. 97523</b>
<b>DWG. NO. P-15434 PRODUCT NO. Z1172-144</b>		

\*REGULARLY FURNISHED UNLESS OTHERWISE SPECIFIED