



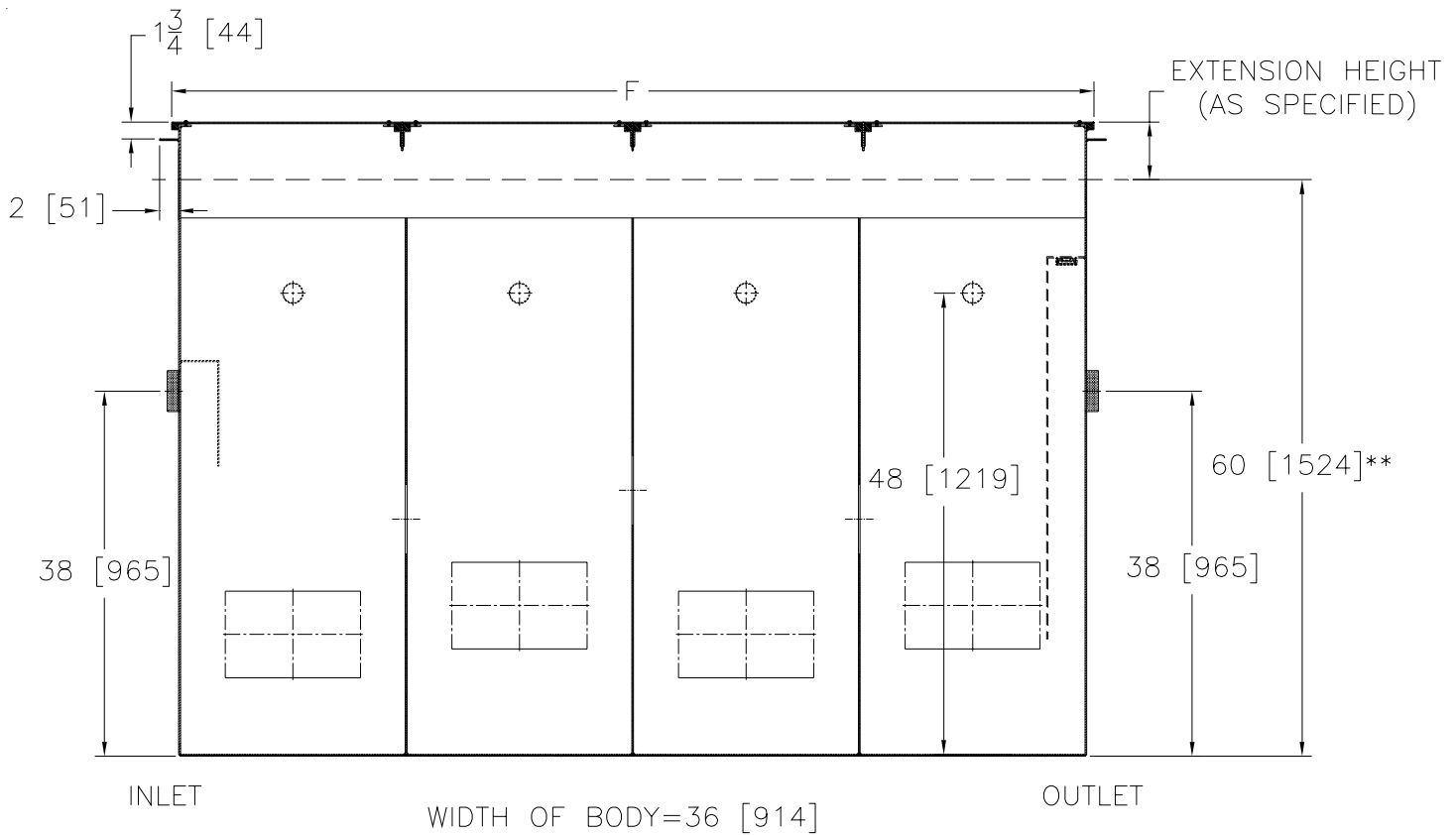
Z1187-E-HD-K

SAND AND SEDIMENT INTERCEPTOR WITH INTEGRAL EXTENSION, ANCHOR FLANGE AND EXTRA HEAVY DUTY TRAFFIC COVER

SPECIFICATION SHEET

TAG _____

Dimensional Data (inches and [mm]) are Subject to Manufacturing Tolerances and Change Without Notice



Size	Cubic Ft. [cm]	Approx. Wt.Lbs. [kg]	F-Dim in Inches
300	43 [1.2]	1600 [726]	60 [1524]
400	54 [1.5]	1750 [794]	72 [1829]
500	72 [2]	2100 [953]	96 [2438]
600	81 [2.3]	2500 [1135]	108 [2743]
700	90 [2.5]	2700 [1226]	120 [3048]
800	108 [3]	3000 [1362]	144 [3658]
1000	135 [3.8]	3640 [1652]	180 [4572]

ENGINEERING SPECIFICATION: ZURN Z1187-E-HD-K Acid Resistant Coated fabricated steel sand and sediment separator, ___cu. ft. capacity below invert of outlet, 4 [102] threaded inlet and outlet, four 2 [51] threaded individual vent connections, integral extension, anchor flange, complete with extra heavy duty reinforced cover for vehicular traffic (specify working load requirements).

** Standard interceptor height for all sizes is 60 [1524]. Specify extension height and overall height required.

OPTIONS (Check/specify appropriate options)

PREFIXES

___ Z Acid Resistant Coated Fabricated Steel*

REV. A	DATE: 09/08/06	C.N. NO. 95557
DWG. NO. 67521	PRODUCT NO. Z1187-E-HD-K	

*REGULARLY FURNISHED UNLESS OTHERWISE SPECIFIED