

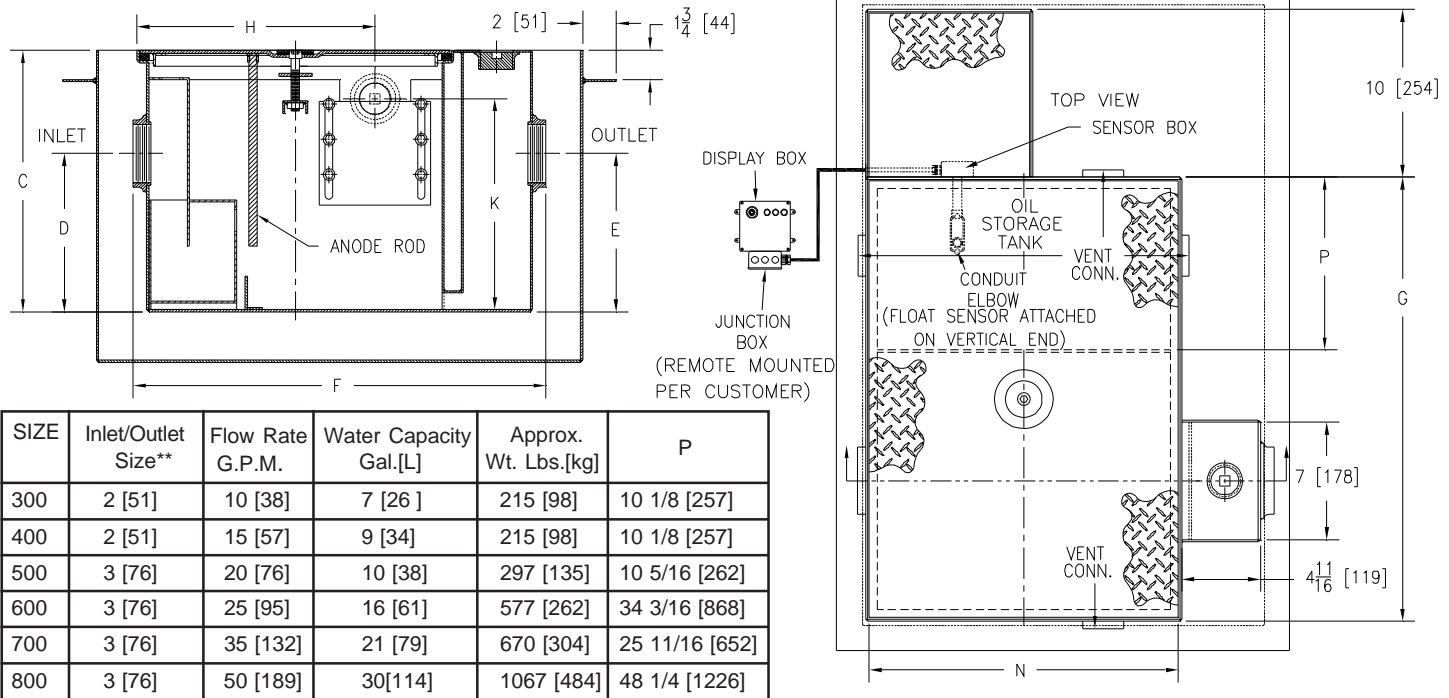


Z1186-ST-78 OIL INTERCEPTOR W/ INTEGRAL STORAGE TANK, ANCHOR FLANGE, AND OIL LEVEL SENSOR

SPECIFICATION SHEET

TAG _____

Dimensional Data (inches and [mm]) are Subject to Manufacturing Tolerances and Change Without Notice



SIZE	Inlet/Outlet Size**	Flow Rate G.P.M.	Water Capacity Gal.[L]	Approx. Wt. Lbs.[kg]	P
300	2 [51]	10 [38]	7 [26]	215 [98]	10 1/8 [257]
400	2 [51]	15 [57]	9 [34]	215 [98]	10 1/8 [257]
500	3 [76]	20 [76]	10 [38]	297 [135]	10 5/16 [262]
600	3 [76]	25 [95]	16 [61]	577 [262]	34 3/16 [868]
700	3 [76]	35 [132]	21 [79]	670 [304]	25 11/16 [652]
800	3 [76]	50 [189]	30 [114]	1067 [484]	48 1/4 [1226]

SIZE	Dimensions in inches [mm]							Oil Storage Tank Capacity Gal.[L]	No. of Covers
	C	D/E	F	G	H	K	N		
300	17 [432]	8 1/4 [210]	23 1/16 [586]	23 9/16 [598]	12 1/16 [306]	11 [279]	16 7/8 [429]	6 [22]	2
400	17 [432]	8 1/4 [210]	23 1/16 [586]	23 9/16 [598]	5 11/16 [144]	11 [279]	16 7/8 [429]	6 [22]	2
500	18 1/2 [470]	9 3/8 [238]	25 1/16 [637]	26 1/2 [673]	14 3/16 [360]	12 1/2 [318]	18 7/8 [479]	8 [30]	2
600	21 1/4 [540]	11 3/4 [298]	35 7/32 [895]	50 7/8 [1292]	19 1/4 [489]	15 1/4 [387]	29 [737]	55 [208]	3
700	22 3/4 [578]	12 7/16 [316]	43 7/16 [1103]	45 [1143]	23 1/4 [591]	16 3/4 [425]	37 [940]	55 [208]	3
800	27 1/4 [692]	14 3/16 [360]	49 7/16 [1256]	70 1/8 [1781]	26 1/4 [667]	21 1/4 [540]	43 [1092]	125 [473]	4

ENGINEERING SPECIFICATION: ZURN Z1186-ST-78

Acid Resistant Coated interior and exterior fabricated steel oil interceptor, with bronze cleanout plug, visible double wall trap seal, removable combination pressure equalizing/flow diffusing baffle and sediment bucket, adjustable oil draw-off gate plate, vent connections and left-hand integral storage tank. Complete with double-wall containment with anchor flange (1 3/4 [44] down from top and 2 [51] wide), secured gasketed non-skid cover, flow control fitting, and anode rod. Fiberglass sensor box contains a float oil level sensor. Fiberglass display box contains one green power light, one red oil light, audible alarm and junction box. Regularly furnished with inlet and outlet in high position. Note: location of outlet from bottom of interceptor cannot be changed.

OPTIONS (Check/specify appropriate options)

PREFIXES

_____ **Z** Acid Resistant Coated Fabricated Steel*

SUFFIXES

_____ **-HD** Heavy duty traffic cover rated at 10,000 lbs. maximum safe live load

_____ **-STR** Storage tank on right hand side when facing the inlet.

Note:

1. Double wall construction will extend the overall length and width of the unit by 3 [76] per side and increase the overall depth by 3 [76].
2. Power supply 120V GFCI.

** Inlet and outlet sizes shown indicate standard operating sizes and flow control settings. Size #300 and #400 will have 3 [76] connections reduced to 2 [51] as standard. Size #700 and #800 will have 4 [100] connections reduced to 3 [76] as standard.

*REGULARLY FURNISHED UNLESS OTHERWISE SPECIFIED

REV. B	DATE: 10/3/07	C.N. NO. 92558
DWG NO. P-15063	PRODUCT NO. Z1186-ST-78	

ZURN INDUSTRIES, LLC. ♦ SPECIFICATION DRAINAGE OPERATION ♦ 1801 Pittsburgh Ave. ♦ Erie, PA 16514

Phone: 814/455-0921 ♦ Fax: 814/454-7929 ♦ World Wide Web: www.zurn.com

In Canada: ZURN INDUSTRIES LIMITED ♦ 3544 Nashua Drive ♦ Mississauga, Ontario L4V1L2 ♦ Phone: 905/405-8272 Fax: 905/405-1292