



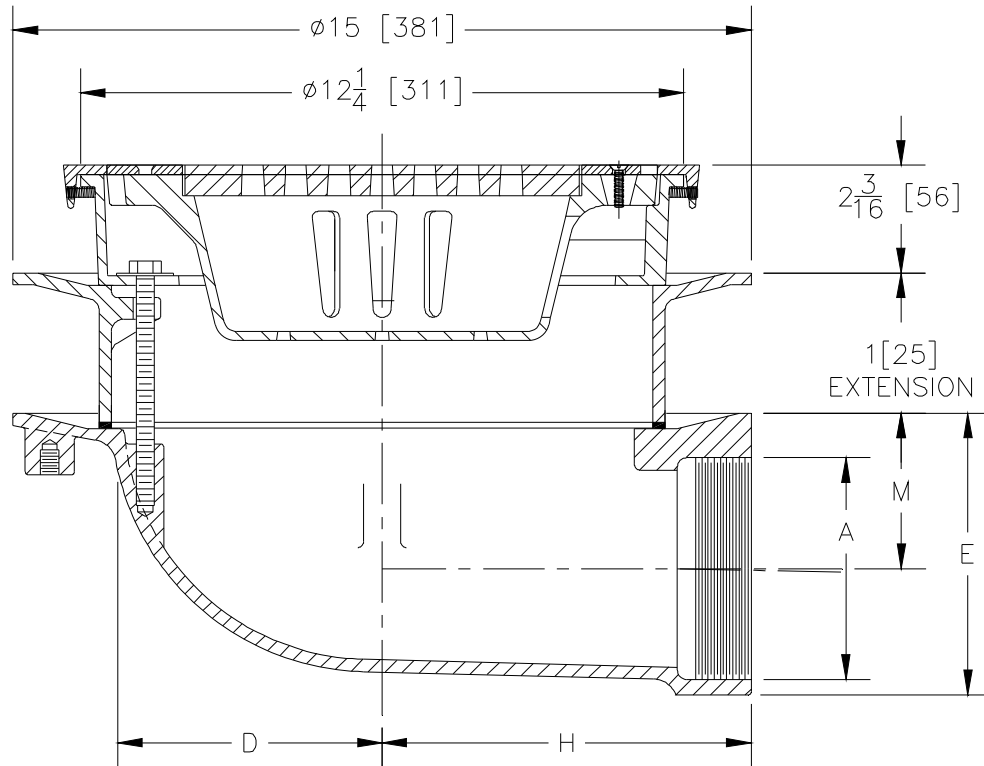
# Z540-92

12 [305] MEDIUM DUTY DRAIN W/ SUR-SET BUCKET,  
STAINLESS STEEL VENEER TOP, AND 1 [25] STATIC  
EXTENSION

SPECIFICATION SHEET

TAG \_\_\_\_\_

Dimensional Data (inches and [ mm ]) are Subject to Manufacturing Tolerances and Change Without Notice



Dimensions in Inches [mm]				Approx. Wt. Lbs. [kg]	Grate open Area Sq. In. [cm <sup>2</sup> ]
A - Pipe Size	D	H	M		
6 [152]	5-7/8 [149]	7-1/2 [191]	4-1/4 [108]	53 [24]	16 [103]

### ENGINEERING SPECIFICATION: ZURN Z540-92

12" [305mm] Diameter top drain, Dura-Coated cast iron body with side outlet, static extension, seepage pan, combination membrane flashing clamp and frame for Sur-Set bucket, medium duty slotted grate and stainless steel veneer top.

### OPTIONS (Check/specify appropriate options)

#### PIPE SIZE

6 [152]

#### (Specify Size) OUTLET

\_\_\_\_\_ IP Threaded

#### 'E' BODY HT. DIMENSION

7-7/8 [200]

### PREFIXES

\_\_\_ ZS D.C.C.I. Body with Stainless Steel Top\*

### SUFFIXES

\_\_\_ -V Backwater Valve (See Z1099)

\_\_\_ -VP Vandal Proof Secured Top

\* Regularly furnished unless otherwise specified.