

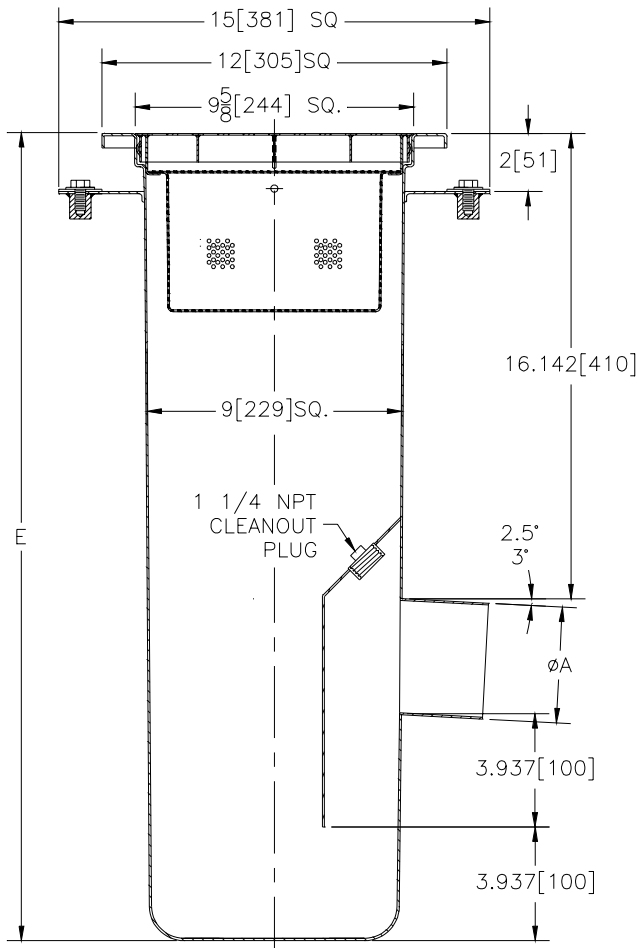


# Z-1750-102

## 12 X 12 [305 x 305] SANI-FLOR RECEPTOR

TAG \_\_\_\_\_

Dimensional Data (inches and [ mm ]) are Subject to Manufacturing Tolerances and Change Without Notice



A Pipe Size	Bucket Open Area Sq. In. [cm <sup>2</sup> ]	Approx. Wt. Lbs. [kg]	Grate Open Area Sq. In. [cm <sup>2</sup> ]
4 [102]	85 [548]	55 [25]	23 [148]
6 [152]	85 [548]	60 [27]	23 [148]

**ENGINEERING SPECIFICATION: ZURN Z-1750-102**  
 12 x 12 [305 x 305], 14 gage, All Type 304 (CF8) Stainless Steel medium duty Sani-Flor receptor with seepage pan, clamp collar and non-tilt, loose set full grate with 1/2 [13] square openings and suspended perforated sediment bucket.

**OPTIONS** (Check/specify appropriate options)

**PIPE SIZE**

- 4 [102]
- 6 [152]

(Specify size/type) **OUTLET**

- \_\_\_\_\_ NH No-Hub
- \_\_\_\_\_ NH No-Hub

**'E' BODY HT. DIM.**

- 28 [711]
- 30 [762]

**PREFIXES**

- \_\_\_\_\_ Z- Type 304 (CF8) Stainless Steel Body\*
- \_\_\_\_\_ ZM- Type 316 (CF8M) Stainless Steel

**SUFFIXES**

- \_\_\_\_\_ -DX Dexotex Flange
- \_\_\_\_\_ -HD Extra Heavy Duty Top Frame & Grate
- \_\_\_\_\_ -HP Heelproof Grate
- \_\_\_\_\_ -1 (Less) Grate
- \_\_\_\_\_ -2 1/2 Grate
- \_\_\_\_\_ -3 3/4 Grate
- \_\_\_\_\_ -4 Full Grate With 3 [76] Square Center Opening
- \_\_\_\_\_ -5 Grate w/4 [102] dia. x 3 3/4 [95] High Funnel
- \_\_\_\_\_ -8 Grate w/8 3/8 x 3 5/8 x 3 3/4 [213 x 92 x 95] High Oval Funnel
- \_\_\_\_\_ -15 Solid Cover
- \_\_\_\_\_ -16 1/2 Solid Cover
- \_\_\_\_\_ -17 3/4 Solid Cover
- \_\_\_\_\_ -18 Solid Cover With 3 [76] Square Center Opening

\*REGULARLY FURNISHED UNLESS OTHERWISE SPECIFIED

<b>REV.</b>	<b>DATE: 5/14/97</b>	<b>C.N. NO. 77903</b>
<b>DWG. NO. P-14470</b>		<b>PRODUCT NO. Z-1750-102</b>