



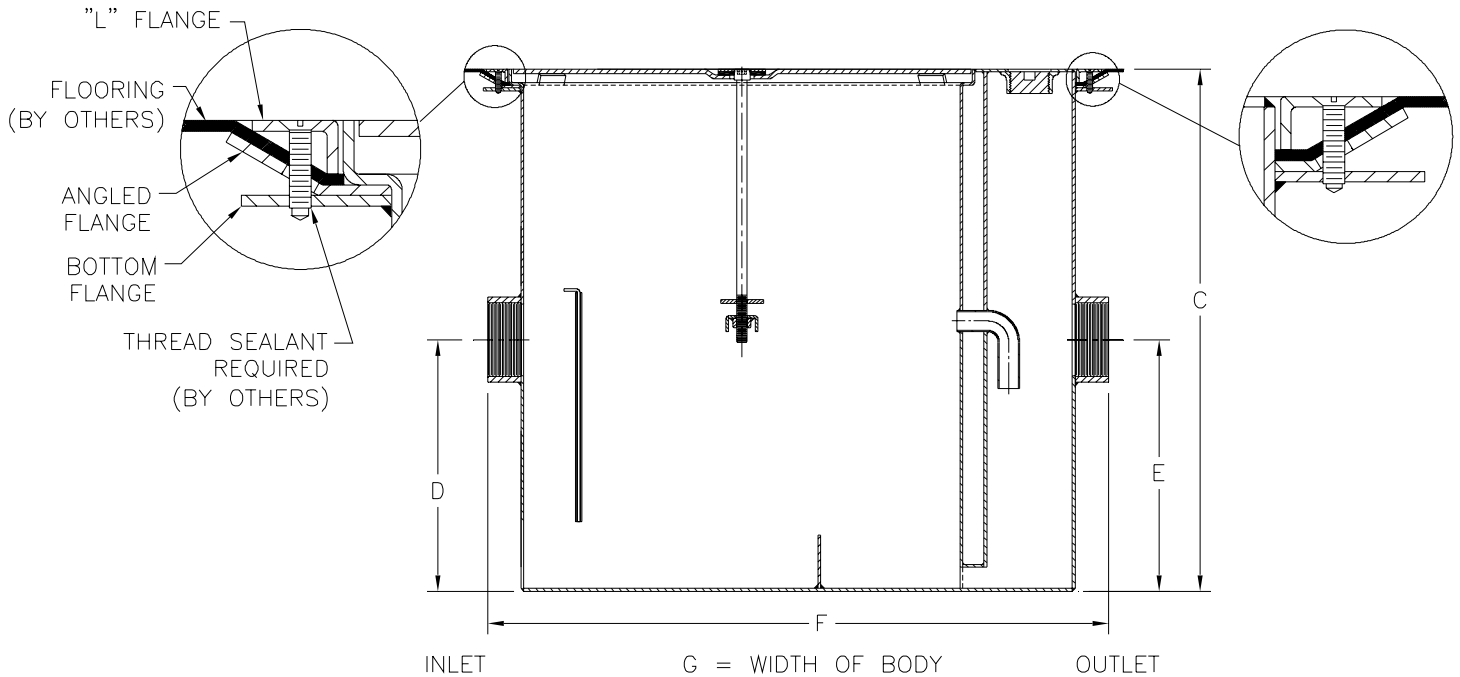
Z1170-116

GREASE INTERCEPTOR W/ FLOOR COVERING ANCHOR FLANGE

SPECIFICATION SHEET

TAG _____

Dimensional Data (inches and [mm]) are Subject to Manufacturing Tolerances and Change Without Notice



Size	Inlet/ Outlet Size**	Flow Rate G.P.M. [L]	Capacity		Approx. Wt. Lbs. [kg]	Dimensions in Inches			
			Water Gal. [L]	Grease Lbs. [kg]		C	D/E	F	G
800	3 [76]	50 [189]	40 [151]	100 [45]	190 [86]	39 [991]	16 [406]	36 [914]	24 1/2 [622]

ENGINEERING SPECIFICATION: ZURN Z1170-116 Acid Resistant Coated interior and exterior fabricated steel grease interceptor, PDI, rated at ___ GPM and ___ Lbs. grease capacity, with internal air relief by-pass, bronze cleanout plug, removable pressure equalizing/flow diffusing inlet baffle, fixed bottom outlet baffle, and visible double wall trap seal. Gasketed non-skid secured cover with floor anchor flange assembly, complete with center tie down assembly, with Z1108 flow control fitting. Regularly furnished with a high inlet and outlet connection. Note: Location of outlet from bottom of interceptor cannot be changed.

PREFIXES

- ___ Z Acid Resistant Coated Fabricated Steel*
- ___ ZS All Type 304 Fabricated Stainless Steel

SUFFIXES

- ___ -AL Aluminum Cover
 - ___ -DI Dual High/Low Inlet.
 - ___ -E Acid Resistant Coated Interior and exterior fabricated steel extension section. (Specify 'C' Dim. required) for recessed installation.
 - ___ -K Anchor flange 1 3/4 [44] down from top and 2 [51] wide. A 3 [76] minimum extension height is required when anchor flange (-K) option is specified. (Specify 'C' Dim. height required.)
 - ___ -KC Anchor flange 1 3/4 [44] down from top and 2 [51] wide with clamp collar. A 3 [76] minimum extension height is required when anchor flange (-K) option is specified.
 - ___ -L Angle type (Z1108-L) flow control device with plunger.
 - ___ -R Acid resistant coated interior and exterior fabricated steel recessing receiver for recessed installation is equipped with adjustable support brackets and gasketed non-skid cover with covered recessed lift handle.
 - ___ -RE Acid resistant coated interior and exterior fabricated steel recessing receiver enclosed type for recessed installation. Furnished with adjustable support brackets and gasketed non-skid cover with covered recessed lift handle.
- ** Inlet and outlet sizes indicate standard operating sizes and flow control setting. Size #800 will have 4 [102] connections reduced to 3 [76] as standard. If changed, flow control must be adjusted accordingly.

*REGULARLY FURNISHED UNLESS OTHERWISE SPECIFIED

REV.	DATE: 1/23/06	C.N. NO. 94610
DWG. NO. P-15243		PRODUCT NO. Z1170-116