



# Z1201-N\_4-RYK17-45

17 [432] ONE PIECE RYK FOOT SUPPORT  
EZCARRY® ADJUSTABLE HORIZONTAL HIGH PERFORMANCE SIPHON  
JET NO-HUB WATER CLOSET CARRIER SYSTEM W/ FINISHING FRAME

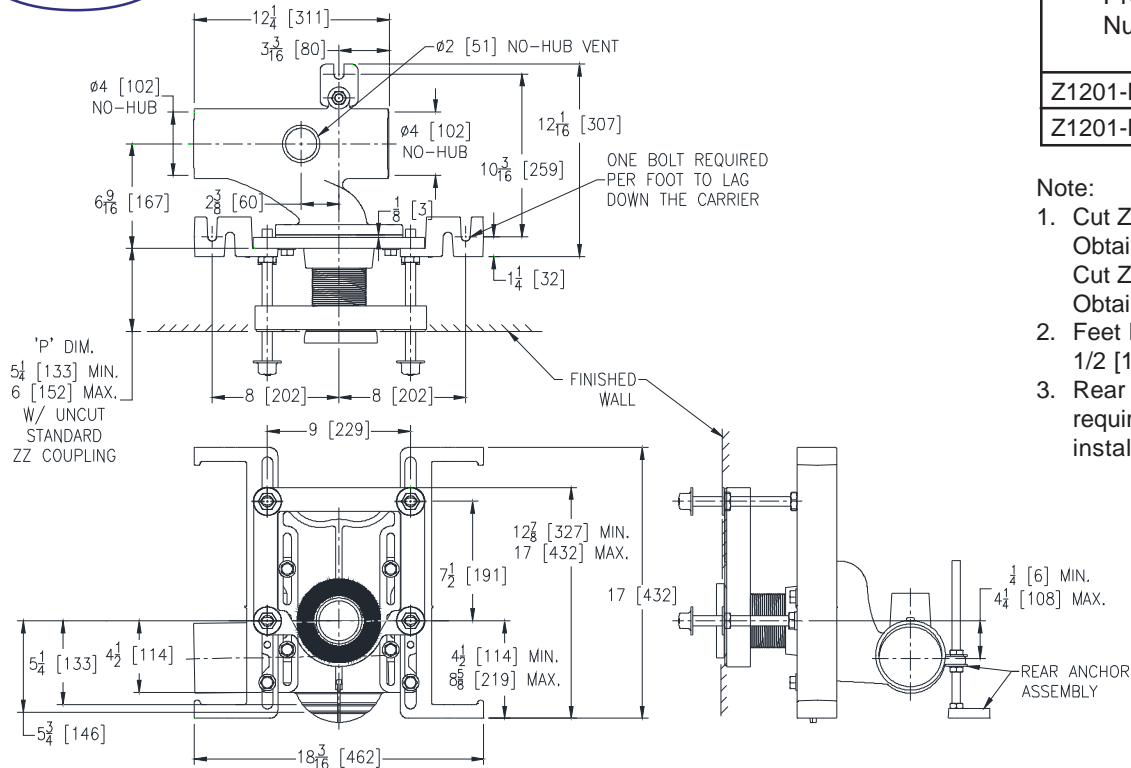
SPECIFICATION SHEET

TAG \_\_\_\_\_

**PATENT  
PENDING**

Dimensional Data (inches and [mm]) are Subject to Manufacturing Tolerances and Change Without Notice

**Z1201-NR4-RYK17-45 Illustrated**



Product Number	Approx. Wt. lbs [kg]
Z1201-NL4-RYK17-45	59 [27]
Z1201-NR4-RYK17-45	

**Note:**

1. Cut ZZ Coupling, Min. 'P' Dim. Obtainable = 2 [51]  
Cut ZQ Coupling, Min. 'P' Dim. Obtainable = 2-1/16 [52]
2. Feet bolted to floor using min. 1/2 [13] dia. anchors.
3. Rear anchor assembly required for secure installation.

**ENGINEERING SPECIFICATION: ZURN Z1201-N\_4-RYK17-45**

EZCarry® horizontal siphon jet water closet carrier system, with high performance waterway and 4" [102 mm] no-hub connections. System includes Dura-Coated cast iron main fitting with hydro-mechanically optimized sweep and extended 2" [51 mm] vent, adjustable gasketed faceplate, floor mounted 17" [432 mm] one piece RYK foot supports, heavy-duty 1/2" [13 mm] rear anchor tie down, fixture bolts, trim, and stud protectors, bonded "Neo-Seal" gasket, and corrosion resistant, adjustable 3" [76 mm] dia. X 6" [152 mm] coupling with integral test cap designed to increase flow velocity, line carry and complete with finishing frame. EZCarry® system complies with all requirements of ASME A112.6.1M up to a 500 lbs [227 kg] maximum static load rating.

**OPTIONS** (Check/specify appropriate options)

- \_\_\_\_ Z1201-NL4-RYK17-45      4 [102] No-Hub Left Hand Inlet with Flow to Right & Finishing Frame  
\_\_\_\_ Z1201-NR4-RYK17-45      4 [102] No-Hub Right Hand Inlet with Flow to Left & Finishing Frame

**PREFIXES**

- \_\_\_\_ Z      D.C.C.I. System with Zurn ZZ NPSM Adjustable Coupling\*  
\_\_\_\_ ZQ      D.C.C.I. System with NPT Faceplate, Non-Adjustable Coupling

**SUFFIXES**

- \_\_\_\_ -A      Auxiliary Support Assembly  
(For 'P' Dim. Greater than 18 [457])  
\_\_\_\_ -CC      Corrosion Resistant Cast Iron Coupling  
(2-1/4 [57] thru 12 [305])  
\_\_\_\_ -CE      EZ-Set™ Coupling (6 [152], 12 [305] or as specified)  
\_\_\_\_ -CL      Custom Length Standard Coupling with Integral Test Cap  
(Specify Length 4, 8, 10, 12 [102, 203, 254, 305])  
\_\_\_\_ -CS      2-1/4 [57] Polymer Coupling w/ Integral Test Cap  
(NPSM only)  
\_\_\_\_ -F      Floor Mounted, Back Outlet Fixture Support  
\_\_\_\_ -G      Galvanized Cast Iron  
\_\_\_\_ -JC      2 [51] Auxiliary Inlet with 1/8 Bend  
\_\_\_\_ -M      Auxiliary Foot Support  
(for 'P' Dim. 10 thru 18 [254 thru 457])  
\_\_\_\_ -VP      Vandal-Proof Trim  
\_\_\_\_ -50      Flush Valve Supply Support for Water Closets

\* Regularly furnished unless otherwise specified.

**Zurn Industries, LLC | Specification Drainage Operation**  
1801 Pittsburgh Avenue, Erie, PA U.S.A. 16502 · Ph. 855-663-9876, Fax 814-454-7929  
In Canada | **Zurn Industries Limited**  
3544 Nashua Drive, Mississauga, Ontario L4V 1L2 · Ph. 905-405-8272, Fax 905-405-1292  
[www.zurn.com](http://www.zurn.com)

Rev. -  
Date: 11/13/17  
C.N. No. 139192  
Prod. | Dwg. No. Z1201-N\_4-RYK17-45