



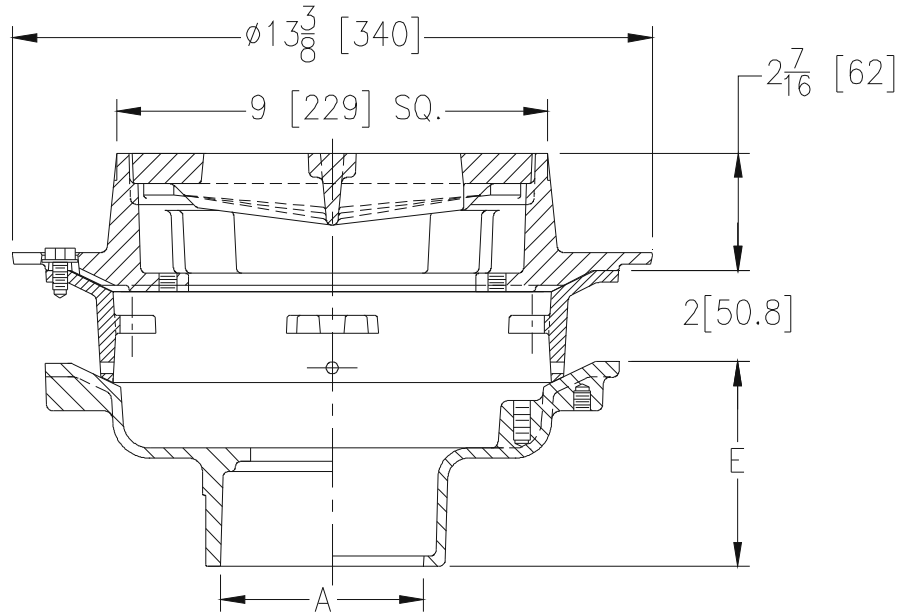
# Z609-F

## 9 [229] SQUARE HEAVY-DUTY DRAIN WITH 2" [51] HIGH EXTENSION

SPECIFICATION SHEET

TAG \_\_\_\_\_

Dimensional Data (inches and [ mm ]) are Subject to Manufacturing Tolerances and Change Without Notice



A Pipe Size (in. [mm])	Approx. Wt. Lbs. [kg]	Grate Open Area Sq. In. [cm <sup>2</sup> ]
2, 3, 4 [51, 76, 102]	32 [15]	14 [90]

### ENGINEERING SPECIFICATION: ZURN Z609-F

9" [229mm] Square Top Drain, Dura-Coated cast iron body with bottom outlet, seepage pan, and heavy-duty cast iron anti-tilt slotted grate and combination membrane flashing clamp and frame. Complete with 2" [51mm] high extension.

### OPTIONS (Check/specify appropriate options)

#### PIPE SIZE

- 2, 3, 4 [51, 76, 102]
- 2, 3, 4 [51, 76, 102]
- 2, 3, 4 [51, 76, 102]
- 2, 3, 4 [51, 76, 102]
- 2, 3, 4 [51, 76, 102]

#### (Specify size/type) OUTLET

- \_\_\_ IC Inside Caulk
- \_\_\_ IG Inside Gasket.
- \_\_\_ IP Threaded
- \_\_\_ NH No-Hub
- \_\_\_ NL Neo-Loc

#### 'E' BODY HT. DIM.

- 3-3/4 [95]
- 3-3/4 [95]
- 2-3/4 [70]
- 4-3/4 [121]
- 3-1/2 [89]

#### PREFIXES

- \_\_\_ Z D.C.C.I. Body and Top\*
- \_\_\_ ZB D.C.C.I. Body w/Polished Bronze Top (Add 3/16" [5mm] to 2-7/16" [62mm] Dim and 3/4" [20mm] to 9" [229mm] Dim.)
- \_\_\_ ZN D.C.C.I. Body w/Polished Nickel Bronze Top (Add 3/16 [5] to 2-7/16 [62] and 3/4 [20] to 9 [229]Dim.)

#### SUFFIXES

- |   |   |
|---|---|
| ___ -AR Acid Resistant Epoxy Coated Cast Iron | ___ -SS Stainless Steel Mesh Liner for Bucket                               |
| ___ -DG Duresist Grate                        | ___ -TC Neo-Loc Test Cap Gasket<br>(2 [51] - 4 [102] NL Bottom Outlet Only) |
| ___ -G Galvanized Cast Iron                   | ___ -TS Top Secured With Slotted Screws                                     |
| ___ -GG Galvanized Grate                      | ___ -V Backwater Valve (See Z1099)  |
| ___ -H Hinged Grate                           | ___ -VP Vandal-Proof Secured Top  |
| ___ -HL Hinged Locking Grate                  | ___ -Y Sediment Bucket  |
| ___ -P Trap Primer Connection                 | ___ -90 90° Threaded Side Outlet Body<br>(2, 3, 4 [51, 76, 102])            |
| ___ -S Secondary Strainer                     |   |
| ___ -SC Solid Cover                           |   |

\* Regularly furnished unless otherwise specified.