



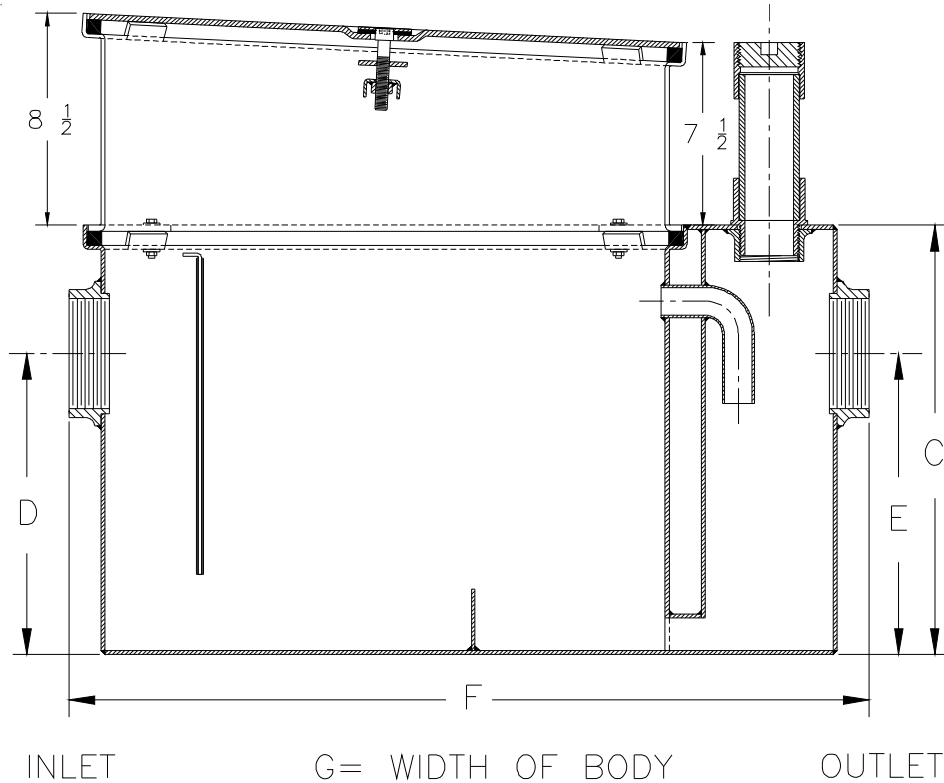
Z1170-135

GREASE INTERCEPTOR WITH SLOPED EXTENSION

SPECIFICATION SHEET

TAG _____

Dimensional Data (inches and [mm]) are Subject to Manufacturing Tolerances and Change Without Notice



Size	Inlet/ Outlet Size**	Flow Rate G.P.M. [L]	Capacity		Approx. Wt. Lbs. [kg]	Dimensions in Inches			
			Water Gal. [L]	Grease Lbs. [kg]		C	D/E	F	G
700	3 [76]	35 [132]	30 [113]	70 [32]	151 [68]	18 3/4 [476]	14 1/4 [362]	34 1/8 [362]	22 1/2 [572]
800	3 [76]	50 [189]	40 [151]	100 [379]	180 [82]	21 1/2 [546]	16 [406]	36 [914]	24 1/2 [610]

ENGINEERING SPECIFICATION: ZURNZ1170-135

Acid Resistant Coated interior and exterior fabricated steel grease interceptor, PDI, rated at ___ GPM and ___ Lbs. grease capacity, with internal air relief by-pass, bronze cleanout plug and visible double wall trap seal with removable combination pressure equalizing/flow diffusing baffle. Gasketed non-skid secured cover complete with center tie-down assembly with Z1108 flow control fitting. Acid resistant coated interior and exterior fabricated steel sloped extension section. Regularly furnished with a high inlet and outlet connection. Note: Location of outlet from bottom of interceptor cannot be changed.

PREFIXES

- ___ Z Acid Resistant Coated Fabricated Steel*
- ___ ZS All Type 304 Fabricated Stainless Steel

SUFFIXES

- ___ -AL Aluminum Cover.
- ___ -DI Dual High/Low Inlet.
- ___ -L Angle type (Z1108-L) flow control device.
- ___ -T Cover recessed for tile/terrazzo. (Specify 'C' Dim. and required recess depth - 1/8 [3], 3/4 [19], or 1 1/4 [32]).
- ___ ** Inlet and outlet sizes shown indicate standard operating sizes and flow control setting. Size #300 will have 3 [76] connections reduced to 2 [51] and sizes #600 thru #800 will have 4 [102] connections reduced to 3 [76] as standard. If changed, flow control must be adjusted accordingly.

REV. A	DATE: 06/25/10	C.N. NO. 111303
DWG. NO. 300486	PRODUCT NO. Z1170-135	

*REGULARLY FURNISHED UNLESS OTHERWISE SPECIFIED