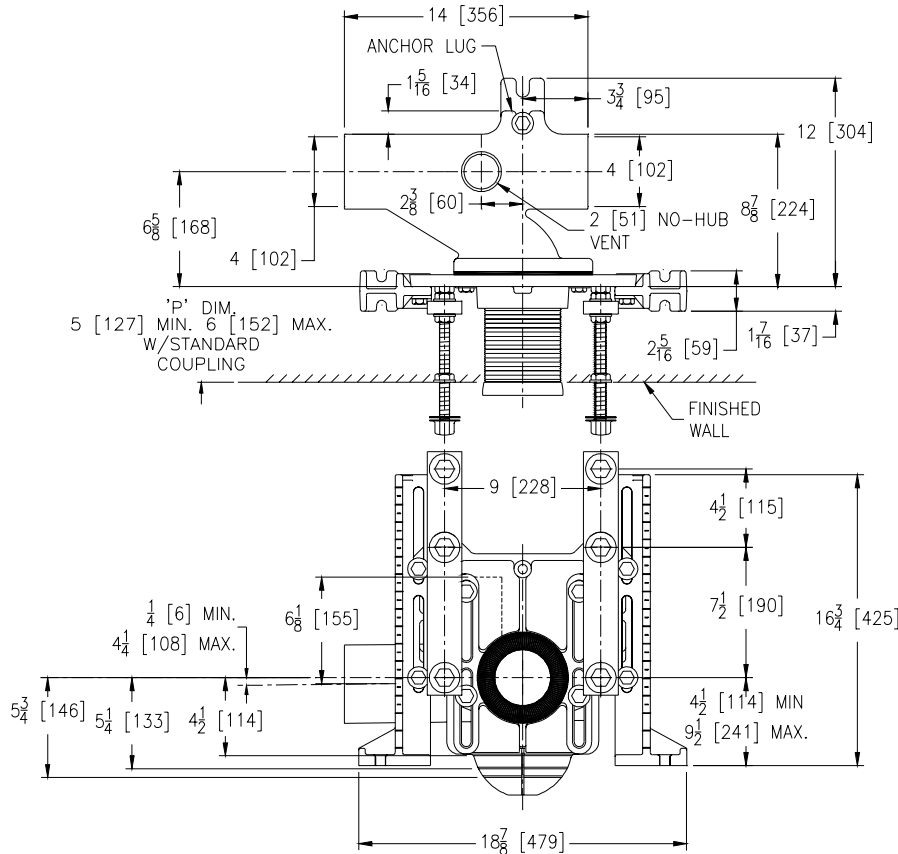




Z-1203-N-W

ADJUSTABLE HORIZONTAL SIPHON JET NO-HUB

Dimensional Data (inches and [mm]) are Subject to Manufacturing Tolerances and Change Without Notice



Product Number	Approx. Wt. Lbs. [kg]
Z-1203-NL4	67 [30]
Z-1203-NR4	

Note:

1. Min. 'P' Dim. Obtainable=2 [51]
2. Feet bolted to floor using min. 1/2 [13] dia. bolts and back slots on carrier feet.
3. Back anchor foot required for secure installation.

ENGINEERING SPECIFICATION: ZURN Z-1203-N-W() Adjustable, horizontal siphon jet water closet "Rigid System" with 4 [102] No-Hub or Hub & Spigot connections. Complete with Dura-Coated cast iron right hand, left hand or double main fitting, with 2 [51] vent, adjustable gasketed face plate, universal floor mounted foot supports, corrosion resistant adjustable ABS coupling with integral test cap, fixture bolts, trim, stud protectors and Adapter for Women's Urinal. Rear anchor tie down and bonded "Neo-Seal" gasket.

OPTIONS (Check/specify appropriate options)

- Z-1203-NR4** 4 [102] No-Hub Right Hand Inlet with Flow to Left
Z-1203-NL4 4 [102] No-Hub Left Hand Inlet with Flow to Right

PREFIXES

- ____ Z- D.C.C.I. System with Zurn "ZZ" Adjustable Coupling*
 ____ ZQ- D.C.C.I. System with Non-Adjustable Coupling

SUFFIXES

- | | |
|--|---|
| <p>____ -A Auxiliary Support Assembly
(For 'P' Dim. Greater than 18 [457])</p> <p>____ -B Blowout Type Fixture Support</p> <p>____ -BC Back Cleanout</p> <p>____ -CC Corrosion Resistant Cast Iron Coupling
(6 [152] to 12 [304])</p> <p>____ -CL Coupling Length Greater Than 12 [304]
(Specify Length Required)</p> <p>____ -F Floor Mount, Back Outlet Fixture Support</p> <p>____ -G Galvanized Cast Iron</p> <p>____ -M Auxiliary Foot Support (For
'P' Dim. 10 [254] - 18 [457])</p> | <p>____ -T Threaded Connection</p> <p>____ -VP Vandal Proof Trim</p> <p>____ -XH Extra-Heavy-Duty 500-Lb. [227 kg.] Carrier</p> <p>____ -X3 3" [76] Foot Extension Assembly</p> <p>____ -X4 4" [102] Foot Extension Assembly</p> <p>____ -29 Mechanical Test Cap Assembly</p> <p>____ -45 Finishing Frame for Siphon Jet System
(For Blowout System -45B)</p> <p>____ -50 Flush Valve Supply Support for W.C.</p> <p>____ -61 "ZZ" Coupling Wrench</p> |
|--|---|

*REGULARLY FURNISHED UNLESS OTHERWISE SPECIFIED

REV. A DATE: 03/06/02 C.N. NO. 88372

DWG. NO. 66449 PRODUCT NO. Z-1203-N-W