



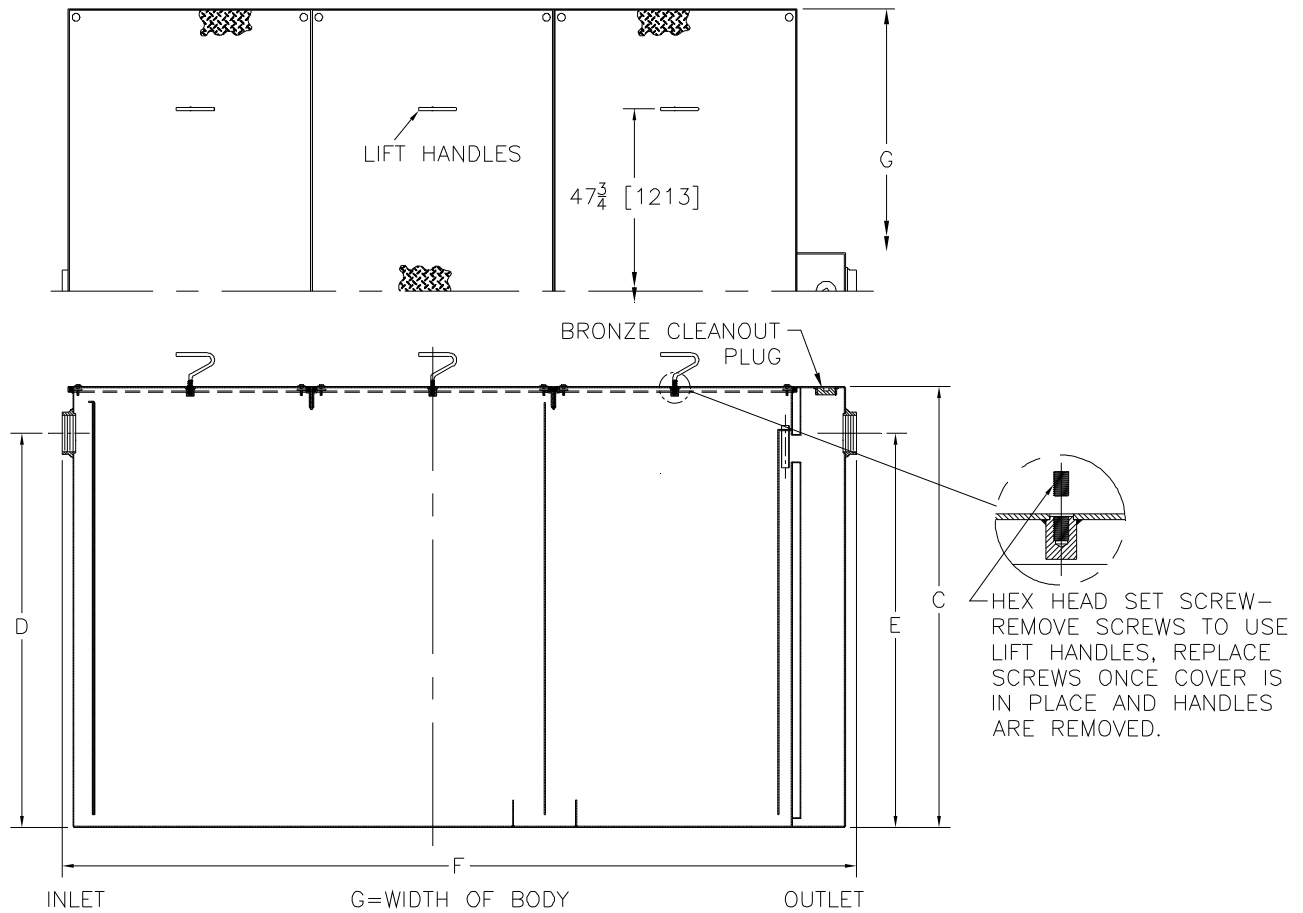
Z1172-101

LARGE CAPACITY GREASE INTERCEPTOR WITH 3 COVERS

SPECIFICATION SHEET

TAG _____

Dimensional Data (inches and [mm]) are Subject to Manufacturing Tolerances and Change Without Notice



Size	Inlet/ Outlet Size**	Flow Rate G.P.M. [L]	Capacity		No. of Covers	Approx. Wt. Lbs. [kg]	Dimensions in Inches			
			Water Gal. [L]	Grease Lbs. [kg]			C	D/E	F	G
1900	6 [152]	500 [1890]	1440 [5443]	1000 [454]	3	2857 [1297]	57 1/4 [1454]	51 5/8 [1311]	104 [2642]	74 [1880]

ENGINEERING SPECIFICATION: ZURNZ1172-98

Large capacity Acid Resistant Coated interior and exterior fabricated steel grease interceptor, rated at ___ GPM and ___ Lbs. grease capacity with internal air relief by-pass, bronze cleanout plug and visible double wall trap seal, removable combination pressure equalizing/flow diffusing baffle, (3) gasketed non-skid secured covers with removable lift handles and enzyme port having bronze plug, complete with flow control fitting. Regularly furnished with inlet and outlet in high position.

OPTIONS (Check/specify appropriate options)

PREFIXES

___ **Z** Acid Resistant Coated Fabricated Steel*

SUFFIXES

- ___ **-E** Acid Resistant Coated interior and exterior fabricated steel extension section. (Specify height required) for recessed installation.
- ___ **-HD** Heavy duty traffic cover rated at 10,000 lbs [4536] kg. maximum safe live load.
- ___ **-K** Anchor flange 1 3/4 [44] down from top and 2 [51] wide. No extension required to accommodate -K.
- ___ **-KC** Anchor flange 1 3/4 [44] down from top and 2 [51] wide with clamp collar.

*REGULARLY FURNISHED UNLESS OTHERWISE SPECIFIED

REV. A	DATE: 07/16/07	C.N. NO. 96939
DWG. NO. P-14313	PRODUCT NO. Z1172-101	