



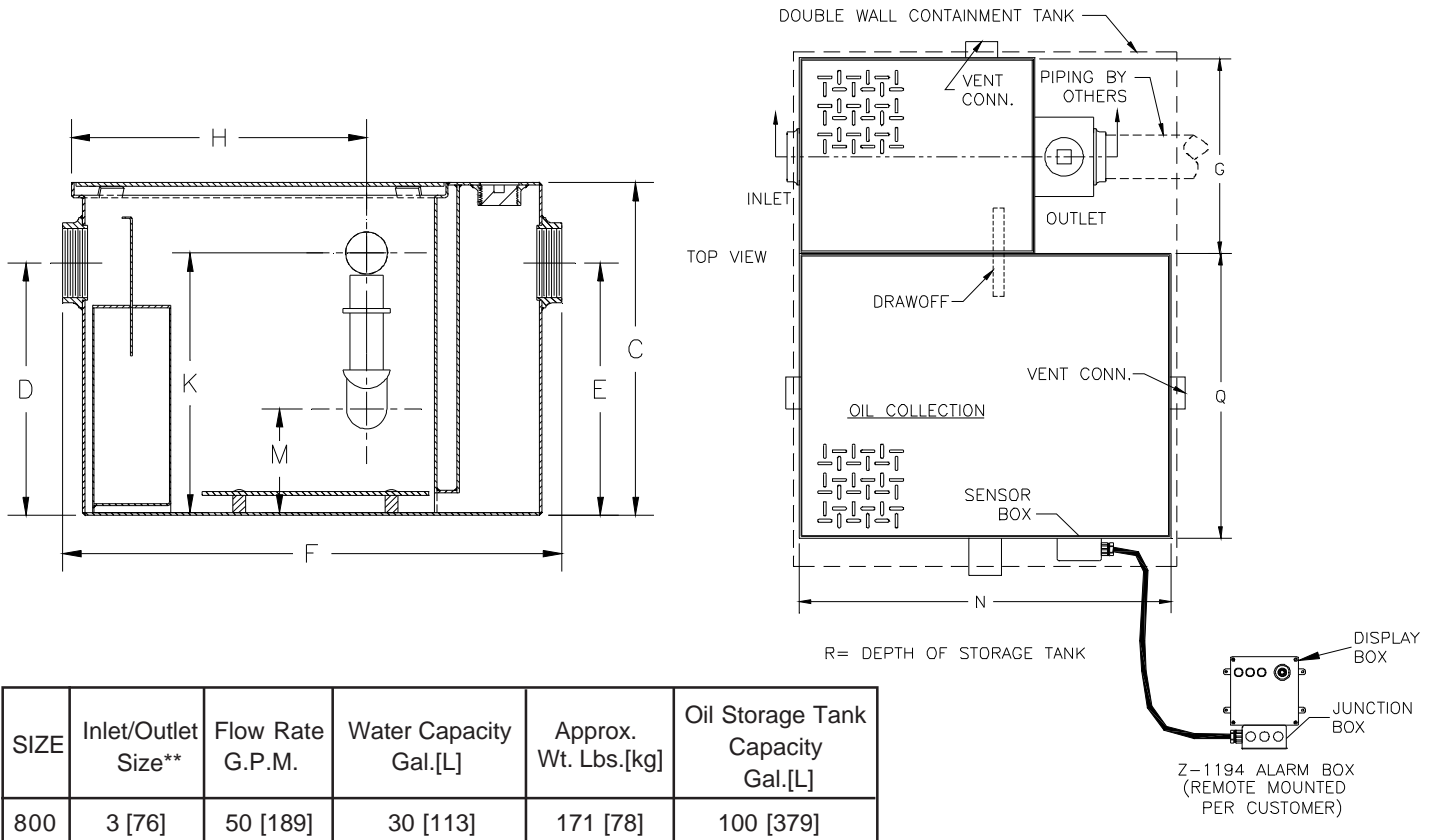
# Z1186-116

## OIL INTERCEPTOR W/ INTEGRAL STORAGE TANK, OIL LEVEL SENSOR AND DOUBLE WALL CONTAINMENT TANK

SPECIFICATION SHEET

TAG \_\_\_\_\_

Dimensional Data (inches and [mm]) are Subject to Manufacturing Tolerances and Change Without Notice



SIZE	Inlet/Outlet Size**	Flow Rate G.P.M.	Water Capacity Gal.[L]	Approx. Wt. Lbs.[kg]	Oil Storage Tank Capacity Gal.[L]
800	3 [76]	50 [189]	30 [113]	171 [78]	100 [379]

Dimensions In Inches										
SIZE	C	D/E	F	G	H	K	M	N	Q	R
800	24 1/4 [616]	14 1/4 [362]	36 [914]	22 1/2 [571]	17 1/4 [438]	21 1/4 [540]	8 3/16 [208]	41 [1041]	15 [381]	58 1/4 [1480]

**ENGINEERING SPECIFICATION:** ZURN Z1186-116 Acid Resistant Coated interior and exterior fabricated steel oil interceptor, with bronze cleanout plug and visible double wall trap seal, removable combination pressure equalizing/flow diffusing baffle and sediment bucket, horizontal baffle, oil drawoff, vent connections, secured gasketed non-skid cover, complete with flow control fitting, integral storage tank, and double wall containment tank with heavy duty load rating. With a fiberglass sensor box containing a float oil level sensor, a fiberglass display box with one green power light, one red oil level light, audible alarm and junction box, Regularly furnished with inlet and outlet in high position.

- Note: 1. Power supply 120V GFCI  
 2. Recommended Installations: Sitting on the floor or recessed in a pit only. (A pit installation requires that a drain or sump pump be installed to keep the pit relatively dry).

**OPTIONS** (Check/specify appropriate options)

**PREFIXES**

— **Z** Acid Resistant Coated Fabricated Steel\*

\*\* Inlet and outlet sizes shown indicate standard operating sizes and flow control settings. Size #800 will have connections reduced to 3 [75] as standard. If changed, flow control and oil draw-off must be adjusted accordingly.

REV. B	DATE: 9/22/04	C.N. NO. 92585
DWG NO. P-14881	PRODUCT NO. Z1186-116	

\*REGULARLY FURNISHED UNLESS OTHERWISE SPECIFIED