

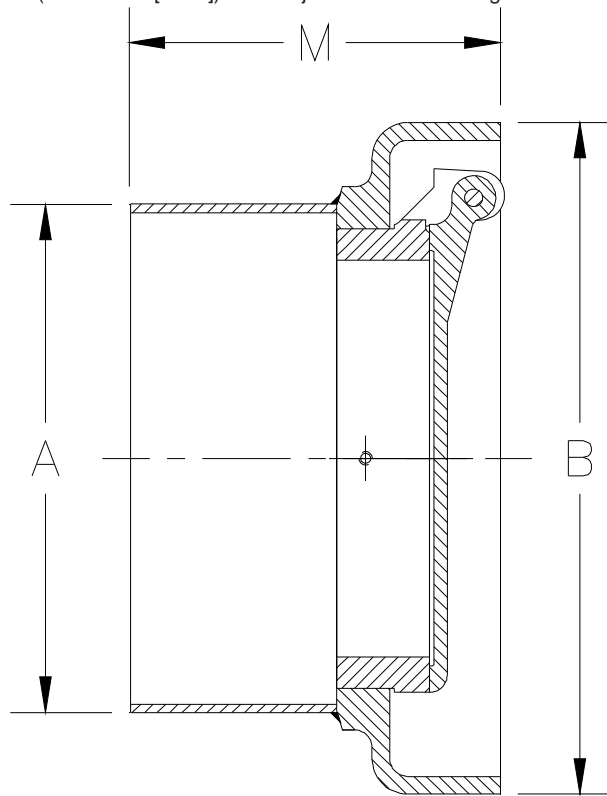


Z1091-75 BACKWATER VALVE FLAPPER TYPE

SPECIFICATION SHEET

TAG _____

Dimensional Data (inches and [mm]) are Subject to Manufacturing Tolerances and Change Without Notice



Dimensions In Inches			Approx. Wt. Lbs. [kg]
A Pipe Size	B	M	
3 [76]	7 [178]	5 [127]	12 [5]
4 [102]	7-1/2 [180]		15 [7]
5 [127]	10-1/2 [267]	6 [152]	20 [9]
6 [152]	9-1/2 [241]	5-1/4 [133]	28 [13]
8 [203]	11-1/2 [292]	6 [152]	42 [19]
10 [254]	14 [356]	7 [178]	58 [26]

ENGINEERING SPECIFICATION: ZURN Z-1091 Backwater Valve, Dura-Coated cast iron body, no-hub inlet and open outlet for installation at end of drainage line, automatic type bronze valve seat which hangs closed during periods of non-operation.

CONNECTIONS (Check/specify appropriate options)

PIPE SIZE

3 thru 6, 8, 10 [76 thru 152, 203, 254]

(Specify size/type) **CONNECTION**

_____ NH No-Hub

PREFIXES

_____ Z D.C.C.I. Body and Cover*

SUFFIXES

_____ -G Galvanized Cast Iron

REV.	DATE: 10/27/10	C.N. NO. 111998
DWG. NO. P-14284		PRODUCT NO. Z1091-75

*REGULARLY FURNISHED UNLESS OTHERWISE SPECIFIED