



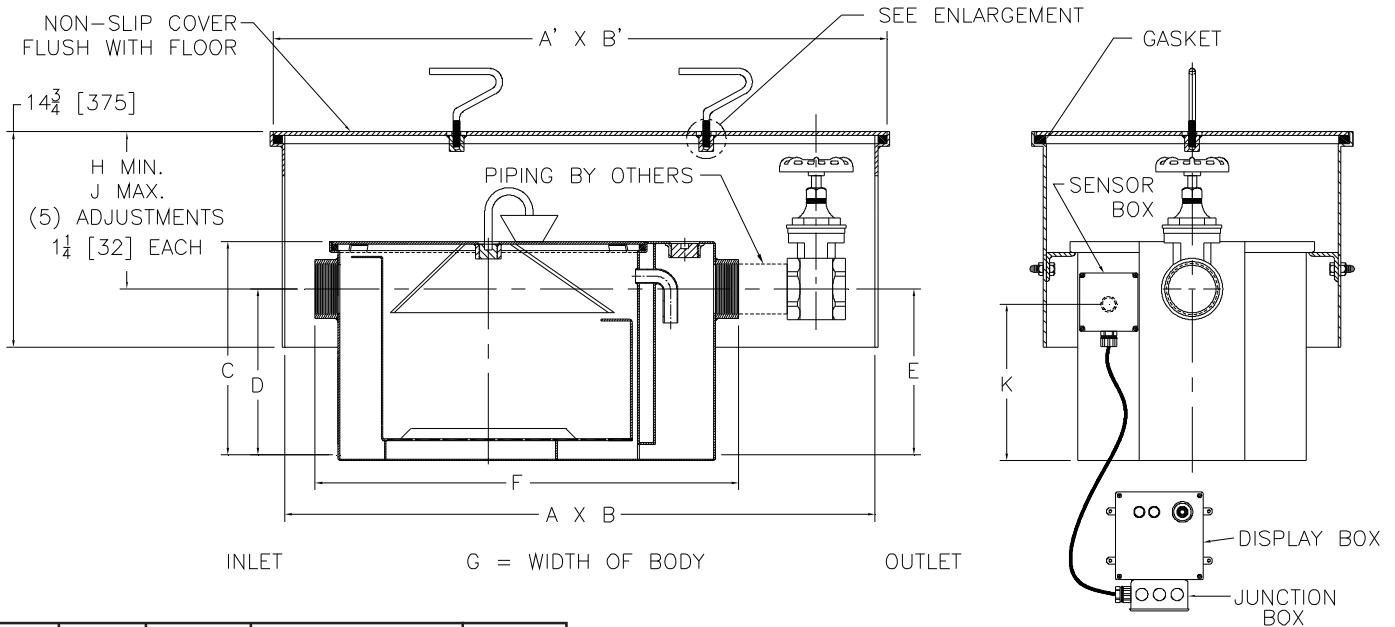
Z1173-TD-81

GREASE INTERCEPTOR W/ GREASE ACCUMULATING CONE, IN-LINE SHUTOFF VALVE, RECESSING RECEIVER & USER NOTIFICATION SYSTEM

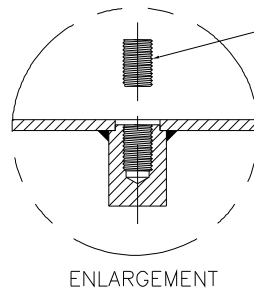
SPECIFICATION SHEET

TAG _____

Dimensional Data (inches and [mm]) are Subject to Manufacturing Tolerances and Change Without Notice



Size	Inlet/Outlet Size**	Flow Rate G.P.M. [L]	Capacity		Approx. Wt. Lbs. [kg]
			Water Gal. [L]	Grease Lbs. [kg]	
400	3[76]	15 [57]	10 [38]	30 [14]	190 [86]
500	3[76]	20 [76]	16 [61]	40 [18]	215 [98]
600	3[76]	25 [95]	21 [79]	50 [23]	251 [114]
700	3[76]	35 [132]	30 [114]	70 [32]	290 [132]
800	3[76]	50 [189]	40 [151]	100 [45]	330 [150]



HEX HEAD SET SCREW—REMOVE SCREWS TO USE LIFT HANDLES, REPLACE SCREWS ONCE COVER IS IN PLACE AND HANDLES ARE REMOVED.

Dimensions in Inches [mm]											
Size	A	A'	B	B'	C	D/E	F	G	H	J	K
400	42 1/8 [1070]	44 1/8 [1121]	20 [508]	20 [508]	13 3/8 [304]	9 3/8 [238]	27 1/8 [689]	16 3/4 [425]	6 [152]	12 1/4 [311]	5 11/16 [145]
500	45 [1143]	47 [1194]	20 3/4 [1194]	20 3/4 [1194]	15 [381]	11 3/4 [298]	30 [762]	17 1/4 [438]	5 1/4 [133]	11 1/2 [292]	7 3/4 [197]
600	47 1/4 [1200]	49 1/4 [1251]	23 1/4 [591]	23 1/4 [591]	17 [432]	12 1/2 [318]	32 1/4 [819]	19 7/8 [505]	6 1/2 [165]	12 3/4 [324]	8 1/2 [216]
700	49 1/8 [1248]	51 1/8 [1299]	26 [660]	26 [660]	18 3/4 [476]	14 1/4 [362]	34 1/8 [867]	22 1/2 [572]	6 1/2 [165]	12 3/4 [324]	9 7/8 [251]
800	51 [1295]	53 [1346]	28 [711]	28 [711]	21 1/2 [546]	16 [406]	36 [914]	24 1/2 [622]	7 1/2 [191]	13 3/4 [349]	11 [279]

ENGINEERING SPECIFICATION: ZURN Z1173-TD-81

Acid Resistant Coated interior and exterior fabricated steel grease interceptor, rated at ___ GPM and ___ Lbs. grease capacity, with internal air relief by-pass, bronze cleanout plug and visible double wall trap seal with removable combination pressure equalizing/flow diffusing baffle and sediment tray. Gasketed non-skid secured cover with draw off port having bronze plug, grease accumulating cone, NPT to hose adaptor, 2' [610] flexible hose, hose clamp, and an in-line closure valve. Complete with Acid Resistant Coated interior and exterior fabricated steel recessing receiver with adjustable support brackets and gasketed non-skid cover with removable lift handles and Z1108 Flow Control Fitting. User notification system includes encased fiberglass sensor box containing an electronic grease level sensor, fiberglass display box w/ visual/audio alarm and junction box. Regularly furnished inlet and outlet in high position. Note: Location of outlet from bottom of interceptor cannot be changed.

PREFIXES

___ Z Acid Resistant Coated Fabricated Steel*

SUFFIXES

___ -L Angle type (Z1108-L) flow control device with plunger (no additional charge).

** Inlet and outlet sizes shown indicate standard operating sizes and flow control settings. Sizes #600 thru #800 will have 4[102] connections reduced to 3[76] as standard. If changed, flow control must be adjusted accordingly.

REV.	DATE: 06/19/07	C.N. NO. 96807
DWG. NO. P-15439	PRODUCT NO. Z1173-TD-81	

*REGULARLY FURNISHED UNLESS OTHERWISE SPECIFIED

ZURN INDUSTRIES, LLC. ♦ SPECIFICATION DRAINAGE OPERATION ♦ 1801 Pittsburgh Ave. ♦ Erie, PA 16514

Phone: 814/455-0921 ♦ Fax: 814/454-7929 ♦ World Wide Web: www.zurn.com

In Canada: ZURN INDUSTRIES LIMITED ♦ 3544 Nashua Drive ♦ Mississauga, Ontario L4V1L2 ♦ Phone: 905/405-8272 Fax: 905/405-1292