



Z888-36-DYN-PSF

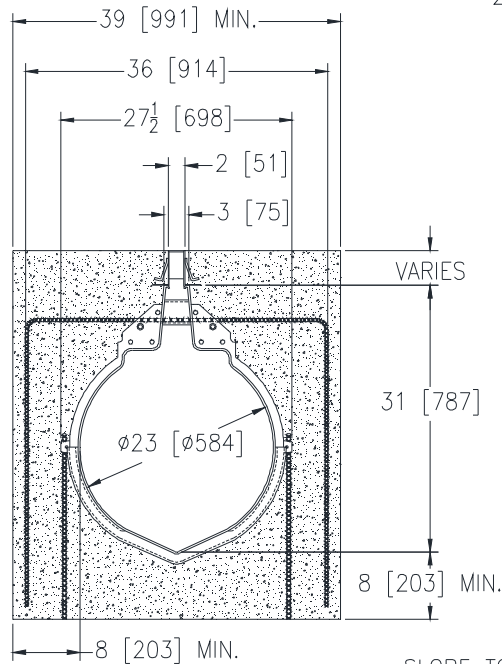
HI-CAP SLOTTED DRAINAGE SYSTEM FOR
DYNAMIC LOADING APPLICATION WITH PRE-SLOPED FRAME
FOR 36 [914] CORRUGATED PIPE OR EQUIVALENT

SPECIFICATION SHEET

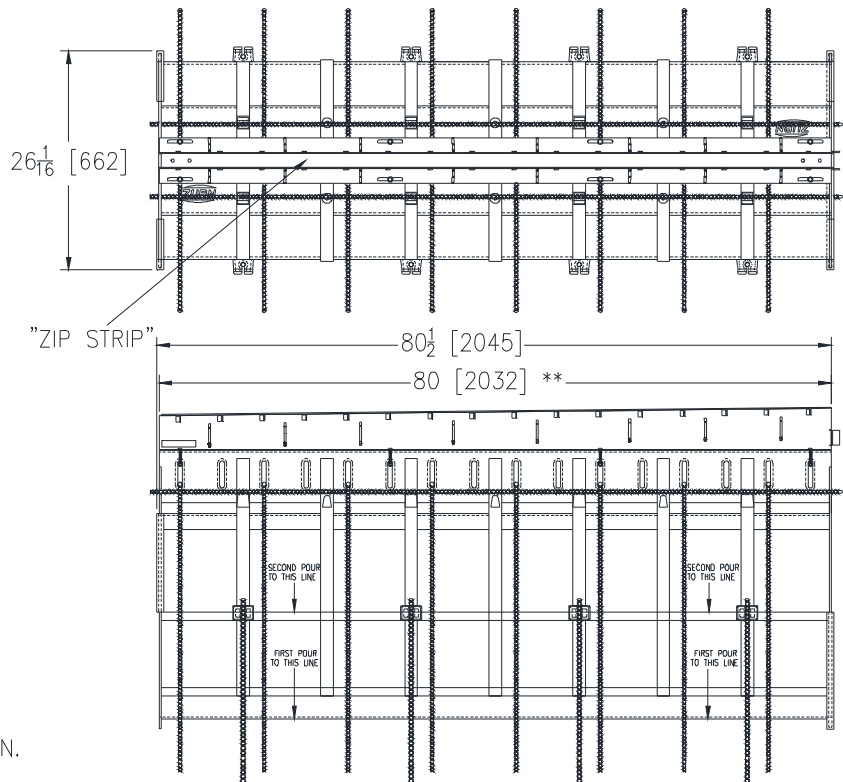
TAG _____

Dimensional Data (inches and [mm]) are Subject to Manufacturing Tolerances and Change Without Notice

Specifying engineer is responsible for concrete encasement and reinforcing based upon application and local codes.



-- SLOPE TO BE SPECIFIED --



** 80 1/2 [2045] LENGTH INCLUDES MALE/FEMALE JOINT OVERLAP

ENGINEERING SPECIFICATION: Zurn Z888-36-DYN-PSF

Slotted Drain channel is 80 [2032] long and 12.5 [318] wide with a 1.75 [44] throat width, made from LDPE linear Low Density Polyethylene. Channels have a mechanical tongue and groove and bolted connection, mechanically lock into the concrete surround every 5 [127] along its length, channels weigh 10.2 lbs. per foot [15.2 kg per meter]. Channel has a smooth 2.5 [64] radiused bottom with a smooth .011 Manning's coefficient, and neutral non-sloping body. Top reveal is non removable and is the finish at the surface. System is anchored into the concrete with Rebar clips or physical anchors every 5 [127] to 10 [254] along the channel body. Integral Rebar Clips are standard. PSF Frame rails shall be fabricated steel conforming to ASTM 36/A36M-93a, shall have concrete anchors 0.25 [6] diameter x 3 [76] in length on 12 [305] centers to form a mechanical lock to the encasement, shall have a slope built in. Slope will be with a beginning height minimum of 2 [51], and a maximum ending height of 20 [508], overall invert range from 33 [838] to 51 [1295], shall be e-coated and meet ASTM B-117 3000 hr salt spray test, and shall be fabricated by certified welder per ASTM AWS D1.1. Minimum 4000 psi concrete encasement shall include "n" shaped #4 0.5 [13] rebar through the system neck every 10 [254], and longitudinal #4 0.5 [13] rebar along chairs on either side of the trench neck. System is capable of Supporting Class E Loading per DIN EN1433 top load classifications.

PREFIX OPTIONS

___ Z 80 [2032] linear low density polyethylene modular drain channel with integral top frame.*

SUFFIX OPTIONS

___ -E1 End Cap
___ -E18 18 [457] No Hub End Outlet
___ -E24 24 [610] No Hub End Outlet
___ -E36 36 [914] No Hub End Outlet
___ -T18/36 Transition from 18 - 36 [457 - 914]

*Regularly Furnished Unless Otherwise Specified

REV. C	DATE: 08/14/13	C.N. NO. 129798
PROD. NO./DWG.NO. Z888-36-DYN-PSF		