



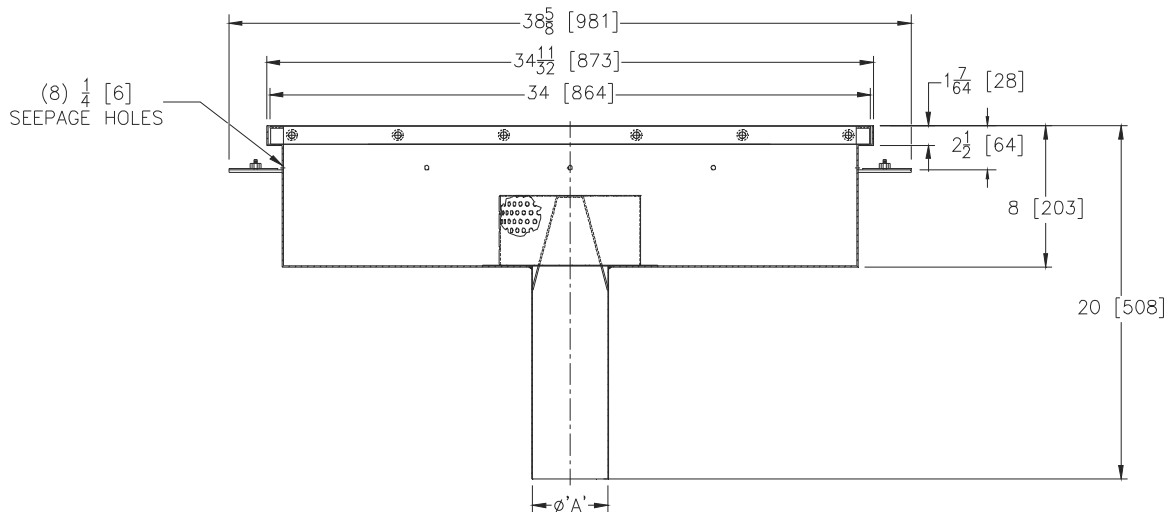
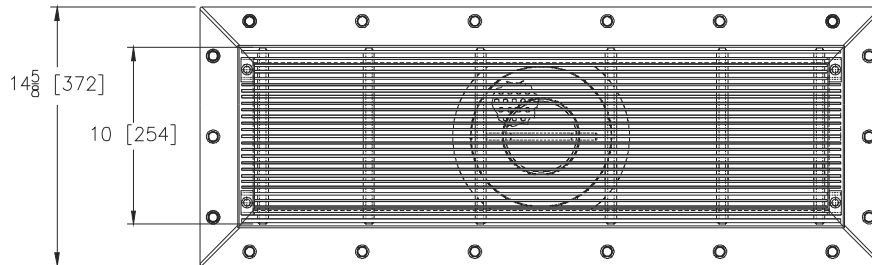
Z1761-104

10 X 34 [254 X 864] KETTLE DRAIN W/ 8 [203] SUMP DEPTH, ANCHOR FLANGE, CLAMPING COLLAR, & 12 [305] LONG OUTLET

SPECIFICATION SHEET

TAG _____

Dimensional Data (inches and [mm]) are Subject to Manufacturing Tolerances and Change Without Notice



A Pipe Size In. [mm]	Approx. Wt. Lbs. [kg]	Grate Open Area Sq. In. [cm ²]
4,6,8 [102,152,203]	60 [27]	250 [1613]

ENGINEERING SPECIFICATION: ZURN ZS1761-104

10" [254 mm] wide x 34" [864 mm] long x 8" [203 mm] deep, 14 gage, All Type 304 (CF8) Stainless Steel light duty Kettle Drain with, loose set full grate, anchor flange, clamping collar, 12" [305mm] long outlet, & perforated stainless steel dome strainer.

OPTIONS (Check/specify appropriate options)

PIPE SIZE

4,6,8 [102,152,203]

(Specify size) **OUTLET**

_____ NH No-Hub

PREFIXES

- _____ Z A.R.E. Coated Fabricated Steel Body and Type 304 (CF8) Stainless Steel Grate
- _____ ZS Type 304 (CF8) Stainless Steel Body and Grate*
- _____ ZM Type 316 (CF8M) Stainless Steel Body and Grate

* Regularly furnished unless otherwise specified.