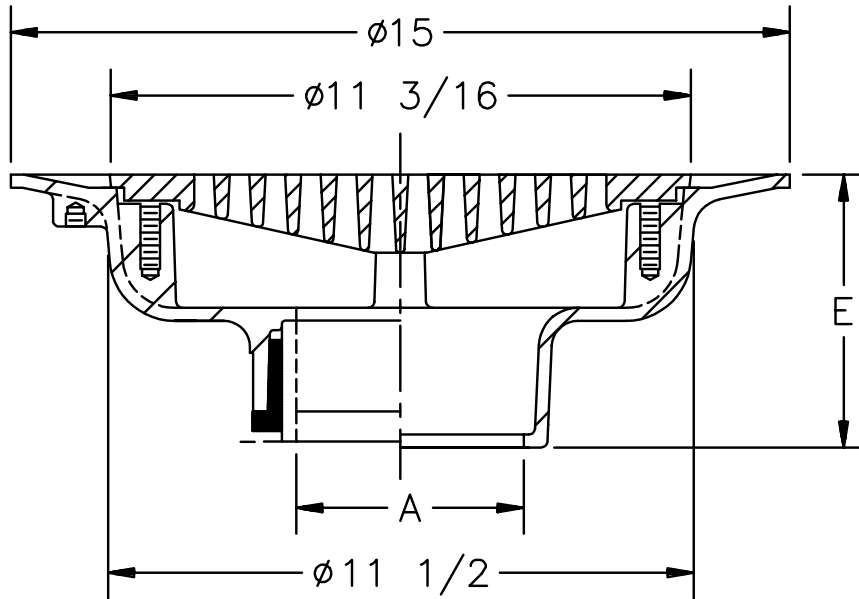




**Z-100-109**  
**15" DIAMETER DRAIN**  
**WITH GRATE**

TAG \_\_\_\_\_

Dimensions Subject to Manufacturing Tolerances



A- Pipe Size In.	Approx. Wt. Lbs.	Grate Open Area Sq. In.
2-3-4	34	29
5-6		
8	36	
10		

**ENGINEERING SPECIFICATION:** ZURN Z-100-109  
 Drua-Coated cast iron body with grate machined to fit flush with top of body.

**OPTIONS** (Check/specify appropriate options)

**OUTLET** (Specify type)

- \_\_\_\_\_ **IC** Inside Caulk
- \_\_\_\_\_ **IG** Inside Caulk w/Sealtrol Gskt.
- \_\_\_\_\_ **IP** Threaded
- \_\_\_\_\_ **NH** No-Hub
- \_\_\_\_\_ **NL** Neo-Loc

**PIPE SIZE** (Specify size)

- \_\_\_\_\_ 2" thru 6", 8", 10"
- \_\_\_\_\_ 2" thru 4", 6"
- \_\_\_\_\_ 2" thru 6", 8", 10"
- \_\_\_\_\_ 2" thru 6", 8", 10"
- \_\_\_\_\_ 2" thru 4"

**'E' BODY HT. DIMENSION**

- 5-1/4"
- 5-1/4"
- 3-3/4"
- 5-1/4"
- 4-5/8"

**PREFIXES**

- \_\_\_\_\_ **Z-** D.C.C.I. Body and Grate\*

**SUFFIXES**

- \_\_\_\_\_ **-AC** Angular Underdeck Clamp
- \_\_\_\_\_ **-DX** Dex-o-Tex Flange
- \_\_\_\_\_ **-G** Galvanized Cast Iron
- \_\_\_\_\_ **-VP** Vandal Proof Secured Top

<b>REV.</b>	<b>DATE: 5/6/92</b>	<b>C.N. NO. 68285</b>
<b>DWG. NO. P-13698 PRODUCT NO. Z-100-109</b>		

\*REGULARLY FURNISHED UNLESS OTHERWISE SPECIFIED