

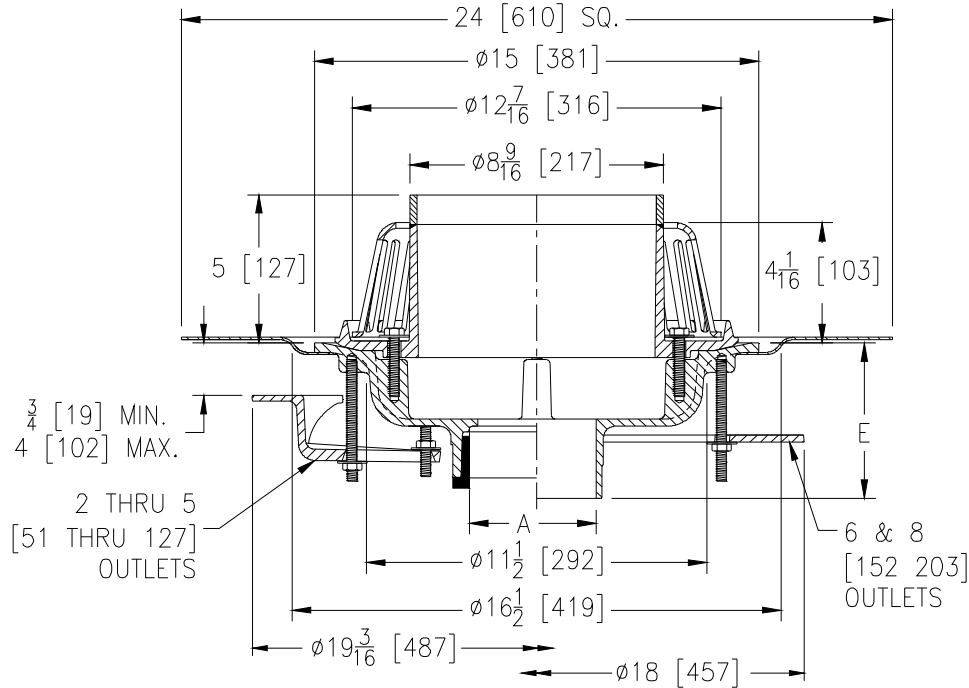


Z100-243

15 [381] DIAMETER MAIN ROOF DRAIN W/ UNDERDECK CLAMP, ROOF SUMP RECEIVER AND 5 [127] HIGH INTERNAL WATER DAM

TAG _____

Dimensional Data (inches and [mm]) are Subject to Manufacturing Tolerances and Change Without Notice



A Pipe Size In.	Approx. Wt. Lbs. [kg]	Dome Open Area Sq. In. [cm ²]
2-3-4 [51-76-102]	42 [19]	103 [665]
5-6 [127-152]	45 [20]	
8 [203]	46 [21]	

ENGINEERING SPECIFICATION: ZURN Z100-243

15 [381] Diameter roof drain. Dura-Coated cast iron body with underdeck clamp, combination membrane flashing clamp/gravel guard, roof sump receiver, 5 [127] high internal water dam, and low silhouette Poly-Dome.

OPTIONS (Check/specify appropriate options)

PIPE SIZE

- 2 thru 6,8 [51 thru 152,203]
- 2 thru 6,8 [51 thru 152,203]
- 2 thru 6,8 [51 thru 152,203]
- 2,3,4 [51,76,102]
- 6 [152]

(Specify size/type) **OUTLET**

- _____ IC Inside Caulk
- _____ IP Threaded
- _____ NH No-Hub
- _____ NL Neo-Loc
- _____ NL Neo-Loc

E BODY HT. DIM.

- 5 1/4 [133]
- 3 3/4 [95]
- 5 1/4 [133]
- 4 9/16 [116]
- 5 7/16 [112]

PREFIXES

- _____ Z D.C.C.I. Body with Poly-Dome*
- _____ ZA D.C.C.I. Body with Aluminum Dome
- _____ ZC D.C.C.I. Body with Cast Iron Dome
- _____ ZRB D.C.C.I. Body with Plain Bronze Dome

SUFFIXES

- _____ -AR Acid Resistant Epoxy Coated
- _____ -BS Bronze Mesh Screen Over Dome
- _____ -DX Dex-o-tex Flange
- _____ -E Static Extension 1 [25] thru 4 [102] (Specify Ht.)
- _____ -EA Adjustable Extension Assembly
2 1/8 [54] thru 3 1/2 [89]
- _____ -G Galvanized Cast Iron
- _____ -GD Galvanized Cast Iron Dome (ZC Only)
- _____ -HD 6 3/4 [171] High Aluminum Dome Strainer
(148 sq.in [955 cm²] open area) (ZA Only)
- _____ -SC Secondary Clamp Collar
- _____ -SS Stainless Steel Mesh Screen Over Dome
- _____ -ST Dome with Solid Top (ZA, ZC & ZRB Only)
- _____ -TC Neo-Loc Test Cap Gasket
(2 - 4 [51 - 102] NL Bottom Outlet Only)
- _____ -VP Vandal-Proof Secured Top
- _____ -84 Stainless Steel Perforated Gravel Guard
- _____ -85 Stainless Steel Perforated Extension

*REGULARLY FURNISHED UNLESS OTHERWISE SPECIFIED

REV.	DATE: 01/23/12	C.N. NO. 122712
DWG. NO. 308775 PRODUCT NO. Z100-243		