



# Z887-24-EXT-HD

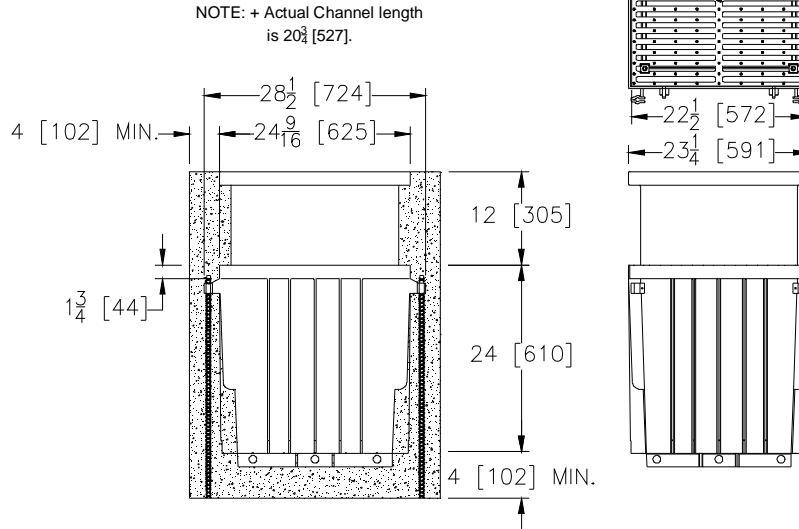
SPECIFICATION SHEET

23-1/4 [591] WIDE REVEAL x 24-5/8 [625] LONG CATCH  
BASIN W/ HEAVY-DUTY FRAME & 12 [305] EXTENSION

TAG \_\_\_\_\_

Dimensional Data (inches and [mm]) are Subject to Manufacturing tolerances and Change Without Notice

SPECIFYING ENGINEER IS RESPONSIBLE FOR  
CONCRETE ENCASEMENT AND REINFORCING  
BASED UPON APPLICATION AND LOCAL CODES



### ENGINEERING SPECIFICATION Zurn Z887-24-EXT-HD

Catch Basin shall be 23-1/4 [591] wide reveal x 24-5/8 [625] long and 24 [610] deep. Catch basin shall be made of 0% water absorbent High Density Polyethylene (HDPE). Shall mechanically lock into the concrete surround. Basin shall weigh less than 20.0 lbs. [9.1 kg]. Catch basin shall have rebar clips standard to secure basin in its final location. Shall be provided with standard DGC grates that lock down to 12 [305] high, 1/4 [6] thick polyethylene extension. Zurn 22-1/4 [565] wide reveal Ductile Iron Slotted Grate conforming to ASTM specification A536-84, Grade 80-55-06. Ductile Iron grate is rated class C per the DIN EN1433 top load classifications. Supplied in 24 [608] nominal lengths with 11/32 [9] wide slots, and 1-1/2 [38] bearing depth. Grate has an open area of 164.00 sq. in per ft. The 1/4 [6] thick Heavy-Duty Frame Assembly conforms to either ASTM specification A36 or A536-84, with 4 - 4 [102] long concrete anchors per basin. Frame supplied with powder coated finish. All welds must be performed by a certified welder per ASTM standard AWS D1.1. Frames Shall be produced in the U.S.A.

### PREFIX OPTIONS (Check/specify appropriate options)

\_\_\_ Z High Density Polyethylene (HDPE) Catch Basin with Heavy-Duty Frame & 12 [305] Extension\*

### SUFFIX OPTIONS (Check/specify appropriate options)

#### Adapters

- |            |  |         |                      |
|------------|--|---------|----------------------|
| ___ -E3/U3 | 3 [76] No-Hub End/Bottom Outlet Adapter  | ___ -IA | Inlet Adapter (Z886) |
| ___ -E4/U4 | 4 [102] No-Hub End/Bottom Outlet Adapter | ___ -IA | Inlet Adapter (Z882) |
| ___ -E6/U6 | 6 [152] No-Hub End/Bottom Outlet Adapter |         |                      |

#### Grate Options (Load Classifications are per DIN EN1433)

- \_\_\_ -BDC Black Acid Resistant Epoxy Coated Ductile Grate – Class C
- \_\_\_ -BDE Black Acid Resistant Ductile Grate – Class E
- \_\_\_ -DCC Ductile Iron Solid Cover - Class C
- \_\_\_ -DGC Ductile Iron Slotted Grate – Class C \*
- \_\_\_ -DGF Ductile Iron Slotted Grate – Class F
- \_\_\_ -GDC Galvanized Ductile Slotted Grate – Class C
- \_\_\_ -GDE Galvanized Ductile Grate – Class E
- \_\_\_ -GDF Galvanized Ductile Grate – Class F
- \_\_\_ -GG Fiberglass Grate - Class A

#### Miscellaneous Options

- \_\_\_ -CBF Black Acid Resistant Epoxy Coated Frame
- \_\_\_ -HDG Galvanized Heavy-Duty Frame Assembly with Anchor Studs
- \_\_\_ -SF Type 304 SS Heavy-Duty Top Frame
- \_\_\_ -Y Sediment Bucket

#### MADE in the U.S.A. (Load Classifications are per DIN EN1433)

- \_\_\_ -FG Galvanized Steel Slotted Grate - Class A
- \_\_\_ -FS Stainless Steel Slotted Grate - Class A
- \_\_\_ -PG Galvanized Perforated Grate - Class A
- \_\_\_ -PS Stainless Steel Perforated Grate - Class A
- \_\_\_ -RFG Reinforced Galvanized Steel Slotted Grate - Class B
- \_\_\_ -RFS Reinforced Stainless Steel Slotted Grate - Class B
- \_\_\_ -RPG Reinforced Galvanized Perforated Grate - Class B
- \_\_\_ -RPS Reinforced Stainless Steel Perforated Grate - Class B

\*REGULARLY FURNISHED UNLESS OTHERWISE SPECIFIED

REV. C	DATE: 02/11/13	C.N. NO. 128769
DWG. NO. 305712	PRODUCT NO. Z887-24-EXT-HD	

ZURN INDUSTRIES, LLC ♦ SPECIFICATION DRAINAGE OPERATION ♦ 1801 Pittsburgh Ave. ♦ Erie, PA 16514

Phone: 814/455-0921 ♦ Fax: 814/454-7929 ♦ World Wide Web: www.zurn.com

In Canada: ZURN INDUSTRIES LIMITED ♦ 3544 Nashua Drive ♦ Mississauga, Ontario L4V1L2 ♦ Phone: 905/405-8272 Fax: 905/405-1292