



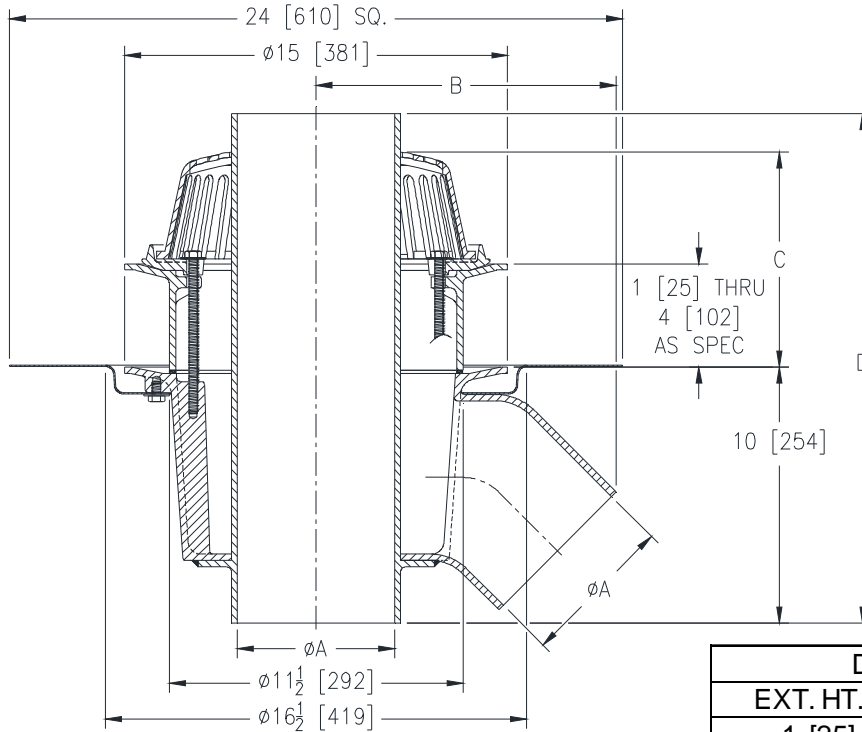
# Z103-45-DP-E

15 [381] DIAMETER DEEP SUMP 45° DUAL OUTLET  
ROOF DRAIN W/ STATIC EXTENSION & TOP-SET DECK  
PLATE

SPECIFICATION SHEET

TAG \_\_\_\_\_

Dimensional Data (inches and [ mm ]) are Subject to Manufacturing Tolerances and Change Without Notice



Dimensions in Inches [mm]		
EXT. HT.	C	D
1 [25]	5-1/2 [140]	17 [432]
1-1/2 [38]	6 [152]	17-1/2 [445]
2 [51]	6-1/2 [165]	18 [457]
2-1/2 [64]	7 [178]	18-1/2 [470]
3 [76]	7-1/2 [191]	19 [483]
3-1/2 [89]	8 [203]	19-1/2 [495]

A Pipe Size In. [mm]	B In. [mm]	Approx. Wt. Lbs. [kg]	Dome Open Area Sq. In. [cm <sup>2</sup> ]
3 [76]	9-7/16 [240]	77 [35]	103 [665]
4 [102]	10-1/4 [260]		
6 [152]	10-15/16 [278]		

**ENGINEERING SPECIFICATION:** ZURN Z103-45-DP-E  
15" [381mm] Diameter dual outlet roof drain with 45° primary outlet connection. Dura-Coated cast iron deep sump body with combination membrane flashing clamp/gravel guard, overflow pipe (3" ,4" ,6" [76mm,102mm,152mm]), low silhouette cast iron dome, static extension and Top-Set Deck Plate.

**OPTIONS** (Check/specify appropriate options)

**PIPE SIZE**

3, 4, 6 [76, 102, 152]

(Specify size) **OUTLET**

\_\_\_\_\_ NH No-Hub

**PREFIXES**

\_\_\_\_\_ Z D.C.C.I. Body w/ Cast Iron Dome\*

**SUFFIXES**

\_\_\_\_\_ -AR Acid Resistant Epoxy Coated Finish  
 \_\_\_\_\_ -DU Cast Iron Dome on Overflow Pipe  
 \_\_\_\_\_ -G Galvanized Cast Iron  
 \_\_\_\_\_ -MS Mesh Screen on Overflow Pipe

\_\_\_\_\_ -SS Stainless Mesh Screen over Dome  
 \_\_\_\_\_ -VP Vandal-Proof Secured Top  
 \_\_\_\_\_ -2OF 2 [51] High Overflow Pipe  
 \_\_\_\_\_ -84 Stainless Steel perforated Gravel Guard

\* Regularly furnished unless otherwise specified.