



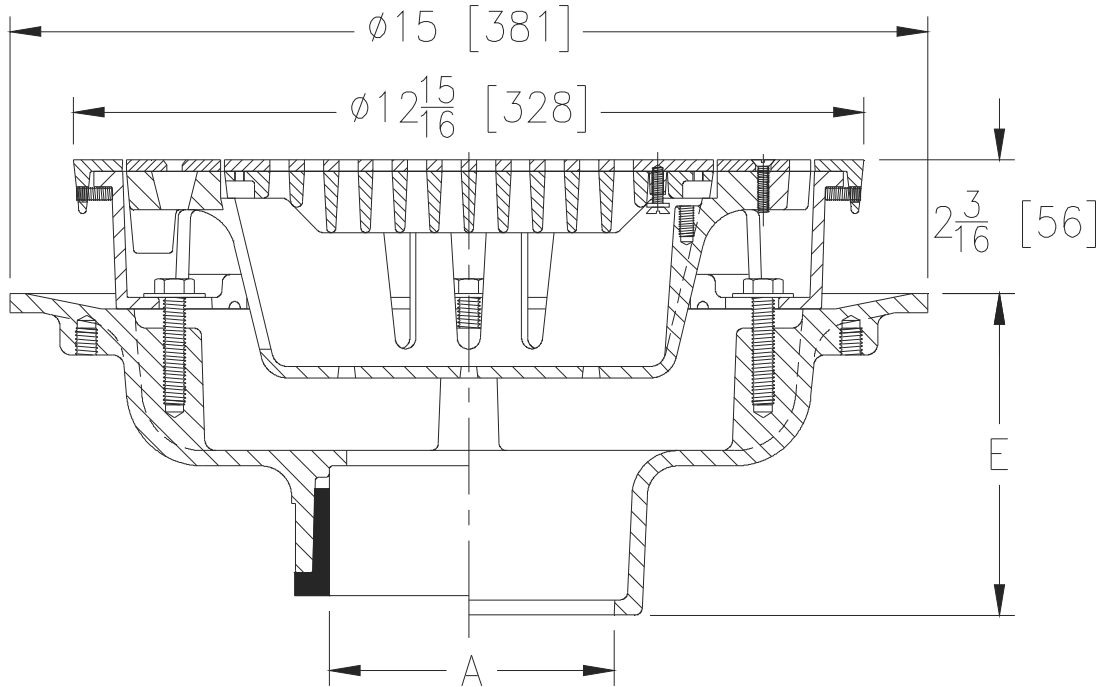
# Z540-88

12 [305] MEDIUM-DUTY DRAIN  
W/ SUR-SET BUCKET AND STAINLESS STEEL TOP

SPECIFICATION SHEET

TAG \_\_\_\_\_

Dimensional Data (inches and [mm]) are Subject to Manufacturing Tolerances and Change Without Notice



A Pipe Size In. [mm]	Approx. Wt. Lbs. [kg]	Grate Open Area Sq. In. [cm <sup>2</sup> ]
2,3,4 [51,76,102]	44 [16]	18 [116]
5,6 [127,152]	45 [17]	
8, 10 [203, 254]	46 [17]	

**ENGINEERING SPECIFICATION: ZURN ZS540-88**  
12" [305mm] Diameter top drain, Dura-Coated cast iron body with bottom outlet, seepage pan and combination membrane flashing clamp and frame for Sur-Set bucket and medium-duty slotted grate with Stainless Steel veneer top.

**OPTIONS** (Check/specify appropriate options)

**PIPE SIZE**

- 2,3,4,5,6,8,10 [51,76,102,127,152,203,254]
- 2,3,4,6 [51,76,102,152]
- 2,3,4,5,6,8,10 [51,76,102,127,152,203,254]
- 2,3,4,5,6,8,10 [51,76,102,127,152,203,254]
- 2,3,4 [51,76,102]

(Specify size/type) **OUTLET**

- \_\_\_\_\_ IC Inside Caulk
- \_\_\_\_\_ IG Inside Gasket
- \_\_\_\_\_ IP Threaded
- \_\_\_\_\_ NH No-Hub
- \_\_\_\_\_ NL Neo-Loc

**'E' BODY HT. DIM.**

- 5-1/4 [133]
- 5-1/4 [133]
- 3-3/4 [95]
- 5-1/4 [133]
- 4-5/8 [117]

**PREFIXES**

- \_\_\_\_\_ ZS D.C.C.I. Body with Type 304 Stainless Steel Top

**SUFFIXES**

- \_\_\_\_\_ -DG Duresist Grate
- \_\_\_\_\_ -H Hinged Grate
- \_\_\_\_\_ -P Trap Primer Connection
- \_\_\_\_\_ -SA Stabilizer Assembly (See Z1036)
- \_\_\_\_\_ -SS Stainless Mesh Liner for Bucket
- \_\_\_\_\_ -TC Neo-Loc Test Cap Gasket  
(2,3,4 [51,76,102] NL Bottom Outlet Only)
- \_\_\_\_\_ -TS Top Secured with Slotted Screws
- \_\_\_\_\_ -V Backwater Valve (See Z1099)
- \_\_\_\_\_ -VP Vandal-Proof Secured Top
- \_\_\_\_\_ -90 90° Side Outlet Body

\* Regularly furnished unless otherwise specified.