



# Z1202-N4-123

BARIATRIC CARRIER - 1000 lbs [454 kg] FOR WALT DISNEY WORLD  
 EZCARRY® ADJUSTABLE VERTICAL HIGH PERFORMANCE SIPHON JET  
 NO-HUB WATER CLOSET CARRIER SYSTEM W/ NOTCHED FRAME FOR  
 BACKSPUD FIXTURES

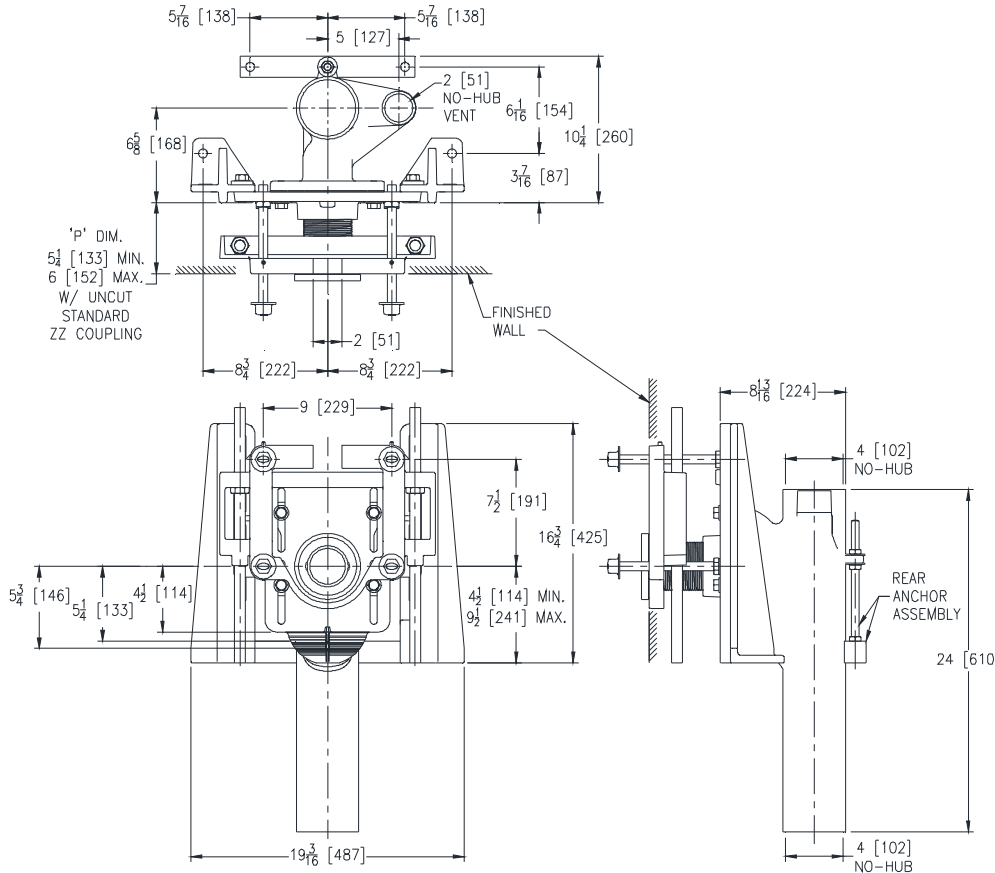
SPECIFICATION SHEET

TAG \_\_\_\_\_

Dimensional Data (inches and [mm]) are Subject to Manufacturing Tolerances and Change Without Notice

### Z1202-N4-123 Illustrated

Product Number	Approx. Wt. lbs [kg]
Z1202-N4-123	115 [52]



**Note:**

1. Cut ZZ Coupling, Min. 'P' Dim. Obtainable = 3 [76]
2. Feet bolted to floor using min. 1/2 [13] dia. anchors.
3. Rear anchor foot required for secure installation.
4. Floor anchors must each be able to withstand a pull-out force of 748 lbs [339 kg].
5. Pull-out forces are calculated values with standard coupling assembly. No safety factor has been applied. See Form # C38 for more information.
6. 2 [51] No-Hub vent connection regularly furnished on right hand side. Left hand available when specified (Suffix -VL)
7. Auxiliary inlet available right (-JR) or left (-JL) or both sides (-JJ) when specified.

**ENGINEERING SPECIFICATION: ZURN Z1202-N4-123**

EZCarry® Bariatric vertical siphon jet water closet carrier system, with high performance Dura-Coated cast iron main fitting with hydro-mechanically optimized sweep, 4" [102 mm] no-hub connections, and extended 2" [51 mm] vent. Corrosion resistant, adjustable 3" [76mm] x 6" [102mm] cast iron coupling, designed to increase flow velocity and line carry, and labor saving "Neo-Seal" bonded gasket optimizes flow performance while reducing installation steps. Complete system includes an adjustable, gasketed faceplate; floor mounted foot supports; rigid support frame assembly; extra-heavy-duty 1/2" [13 mm] rear anchor tie down; fixture bolts, trim, and stud protectors. EZCarry® XB system complies with all applicable requirements of ASME A112.6.1M up to a 1000 lbs [454 kg] maximum static load.

**OPTIONS** (Check/specify appropriate options)

\_\_\_ Z1202-N4-123      4 [102] No-Hub Stack, Single Inlet, 2 [51] Right Hand Vent

**PREFIXES**

\_\_\_ Z      D.C.C.I. System with Zurn ZZ Adjustable Coupling\*

**SUFFIXES**

- |         |  |         |  |
|---------|--|---------|--|
| ___ -CC | Corrosion Resistant Cast Iron Coupling (2-1/4 to 12 [57 to 305]) | ___ -VL | Left Hand Vent Connection                    |
| ___ -G  | Galvanized Cast Iron   | ___ -VP | Vandal-Proof Trim                            |
| ___ -JJ | Two 2 [51] Auxiliary Inlets                                      | ___ -50 | Flush Valve Supply Support for Water Closets |
| ___ -JL | 2 [51] Left-Hand Auxiliary Inlet                                 |         |  |
| ___ -JR | 2 [51] Right-Hand Auxiliary Inlet                                |         |  |

\* Regularly furnished unless otherwise specified.

Zurn Industries, LLC | Specification Drainage Operation  
 1801 Pittsburgh Avenue, Erie, PA U.S.A. 16502 · Ph. 855-663-9876, Fax 814-454-7929  
 In Canada | Zurn Industries Limited  
 3544 Nashua Drive, Mississauga, Ontario L4V 1L2 · Ph. 905-405-8272, Fax 905-405-1292  
[www.zurn.com](http://www.zurn.com)

Rev. -  
 Date: 01/10/17  
 C.N. No. 136001  
 Prod. | Dwg. No. Z1202-N4-123